



2 Cornishes Cottages, Woodbury

Exeter

In Excess of £370,000



2 Cornishes Cottages

Woodbury, Exeter

Council Tax band: C

Tenure: Freehold

EPC Energy Efficiency Rating: C

EPC Environmental Impact Rating: D

- Popular Woodbury Location.
- Easy access to Exeter
- 4 bedroom home
- Open Planned living/dining area
- Off road parking & Garage with parking space.
- Principal bedroom has en suite attached.
- Loft conversion has taken place.
- Enclosed rear garden
- Modern bathroom





Hallway

Spacious entrance with storage under stairs, access through to the kitchen and the lounge diner.

Living/Dining room

25' 2" x 11' 8" (7.67m x 3.56m)

An excellent hosting area with double aspect lighting, the open planned space leads to the rear garden.

Kitchen

9' 4" x 9' 3" (2.84m x 2.82m)

Modern kitchen units with a good amount of storage. Space for a free standing Fridge Freezer & washing machine.

Principal Bedroom

14' 9" x 10' 9" (4.50m x 3.28m)

Good sized room with velux window, useful storage with access to an adjacent en suite. Located on the second floor.

En Suite

Modern fitted en suite with a walk in shower. The room has natural ventilation through a velux window.

Bedroom 2

13' 4" x 10' 2" (4.06m x 3.10m)

Double bedroom with built in storage. Located on the first floor.

Bedroom 3

9' 9" x 7' 4" (2.97m x 2.24m)

Double bedroom with built in storage in the recess. Located on the first floor.

Bedroom 4

Single bedroom on first floor

Bathroom

Modern fitted bathroom with shower over the bath. Heated towel rail and natural ventilation through an external window. Located on the first floor.





REAR GARDEN

Rear garden, with patio & decking shed for storage.

GARAGE

DRIVEWAY

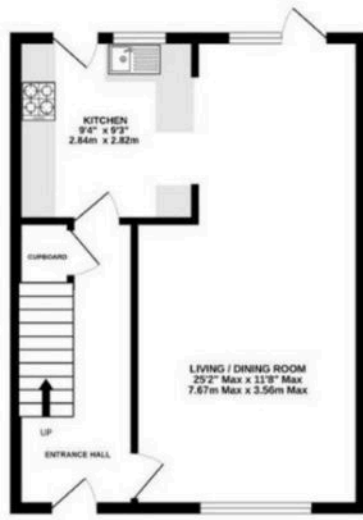
DRIVEWAY

1 Parking Space

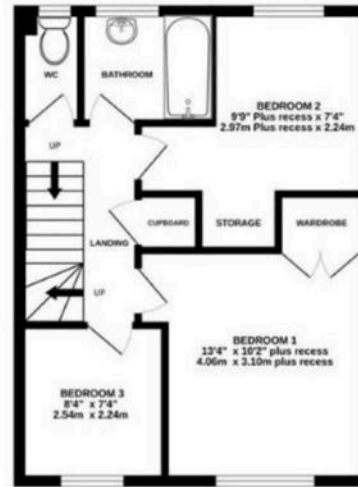
Parking at the front of the property.



GROUND FLOOR



1ST FLOOR



2ND FLOOR



2 CORNISHES COTTAGES

Whilst every attempt has been made to ensure the accuracy of the floorplan contained here, measurements of doors, windows, rooms and any other items are approximate and no responsibility is taken for any error, omission or mis-statement. This plan is for illustrative purposes only and should be used as such by any prospective purchaser. The services, systems and appliances shown have not been tested and no guarantee as to their operability or efficiency can be given.
Made with Metropix ©2024

Housen Estates is proud to partner with **Custom Insurance & Mortgage Solutions** to offer expert mortgage and insurance advice tailored to your property journey. Whether you're buying your first home, moving up the ladder, or expanding your portfolio, our trusted partners provide personalised support, access to a wide panel of lenders, and guidance every step of the way. Together, we make securing your dream home simple, smart, and stress-free.

Scan the QR code or visit www.custominsurancemortgagesolutions.co.uk and click on 'Start Your Journey' at the top of any page.