



Jubilee House, Woodbury

Exeter

Guide Price £340,000



Jubilee House

Woodbury, Exeter

Nestled in picturesque village of Woodbury, this mid-terraced house offers an idyllic living experience near Exeter. Featuring spacious rooms, parking, and a low maintenance garden. Don't miss out!

Council Tax band: D

Tenure: Freehold

EPC Energy Efficiency Rating: D

EPC Environmental Impact Rating: E

- Easy access to the M5 and the centre of Exeter
- Off road parking available to the property
- South facing low maintenance walled courtyard
- In the heart of the East Devon village of Woodbury





Kitchen

The modern kitchen with feature radiators has a range of base and wall units, a Cople oven, electric hob, plumbing for a dishwasher and an understairs alcove used for a free standing fridge freezer. It leads to a light and airy dining area.

Dining Room

The glazed ceiling provide an abundance of natural light in the dining room. This room leads to the W/C and the courtyard garden on one side and the utility room on the other.

Living Room

Front door leads to an inner hallway, to the left the living room, which has double aspect windows, which allow excellent natural light to flow through the room.

Home office/snug

This room provides an ideal space for a variety of uses including a home office, snug or playroom.

Bedrooms

The three spacious double bedrooms are on the first floor. The principal bedroom has a modern ensuite and enjoys a dual aspect with views to the village.

En-Suite

The modern ensuite includes a shower, basin and w/c.

Family Bathroom

The spacious family bathroom is well appointed with a shower over the bath as well as a vanity sink with storage underneath.





REAR GARDEN

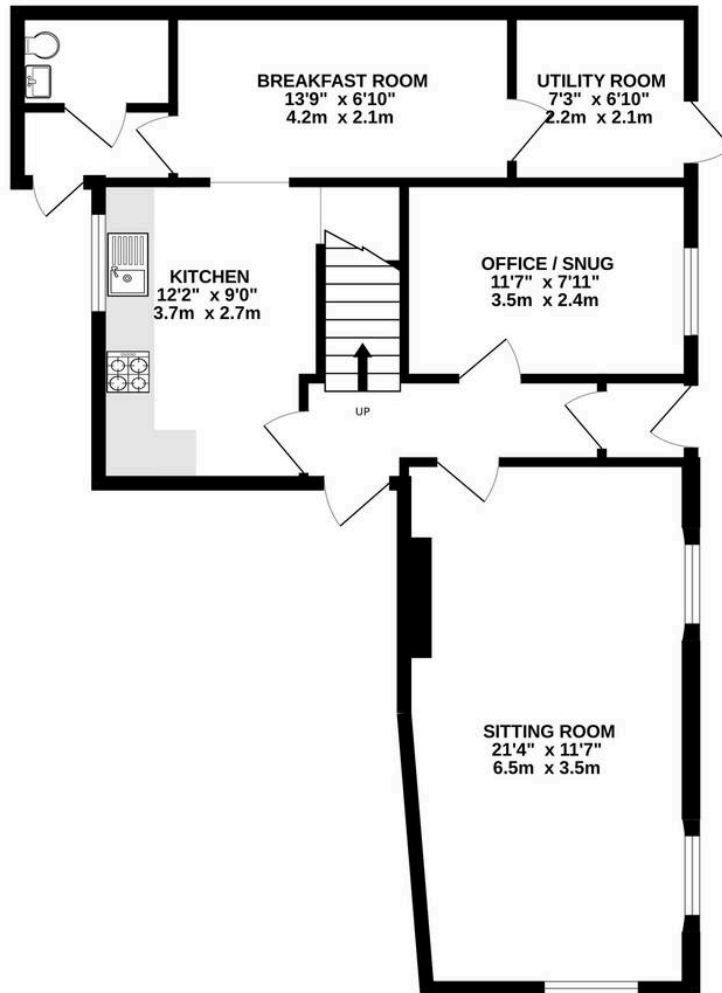
A good sized rear courtyard garden, south facing, enclosed and low maintenance.

ON STREET

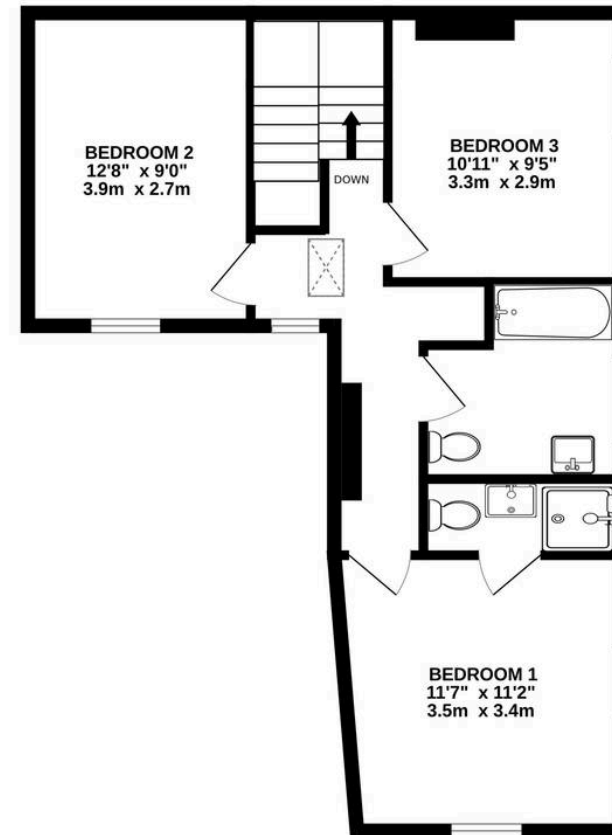
OFF STREET



GROUND FLOOR
775 sq.ft. (72.0 sq.m.) approx.



1ST FLOOR
553 sq.ft. (51.4 sq.m.) approx.



JUBILEE HOUSE

TOTAL FLOOR AREA : 1328 sq.ft. (123.4 sq.m.) approx.

Whilst every attempt has been made to ensure the accuracy of the floorplan contained here, measurements of doors, windows, rooms and any other items are approximate and no responsibility is taken for any error, omission or mis-statement. This plan is for illustrative purposes only and should be used as such by any prospective purchaser. The services, systems and appliances shown have not been tested and no guarantee as to their operability or efficiency can be given.
Made with Metropix ©2024



Housen Estates is proud to partner with **Custom Insurance & Mortgage Solutions** to offer expert mortgage and insurance advice tailored to your property journey. Whether you're buying your first home, moving up the ladder, or expanding your portfolio, our trusted partners provide personalised support, access to a wide panel of lenders, and guidance every step of the way. Together, we make securing your dream home simple, smart, and stress-free.

Scan the QR code or visit www.custominsurancemortgagesolutions.co.uk and click on 'Start Your Journey' at the top of any page.