

Daleham Mews

| Hampstead | NW3

PropertyTime

EST 2008



£1,100,000

A rare to the market is this stunning coach house ground floor conversion flat, situated on a pretty cobbled mews moments from Belsize Village (Incl Shops, Cafes & Outdoor Streetwork).

This charming property comprises a very spacious living space including open-plan fully equipped kitchen/ reception room, with corner snug, large windows, plenty of period features including two real wood burning fire stoves, glass ceiling roof light, large windows and real oak wood floors.

There is a small stonewalled courtyard, and good size bedroom with en-suite shower room and front facing beautiful wooden barn-door and windows opening onto a charming quiet cobbled mews.



1



1



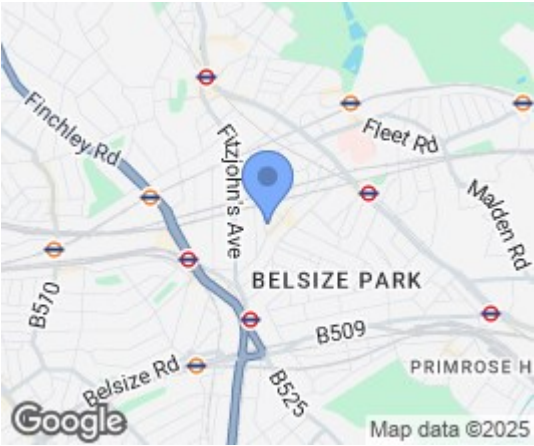
1

020 7794 2008 www.property-time.co.uk info@property-time.co.uk

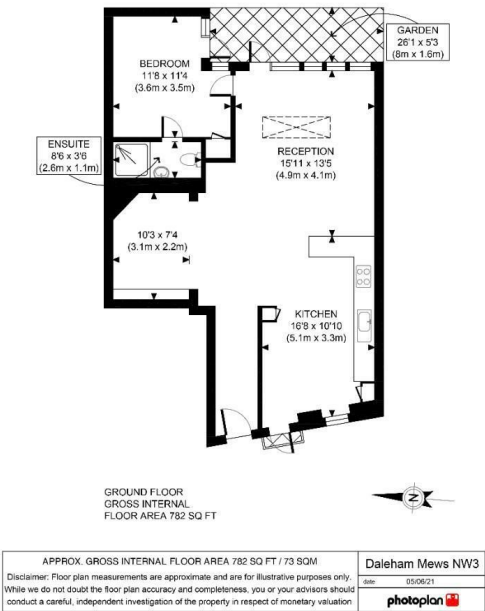
None of the information within these details can be relied upon as being an actual representation of the property

- Reception
- 16'0" x 13'5" (4.9 x 4.1)
- Kitchen
- 16'8" x 10'9" (5.1 x 3.3)
- Ensuite bathroom
- 8'6" x 3'7" (2.6 x 1.1)
- Bedroom - 3.6 x 3.5
- Garden
- 26'2" x 5'2" (8 x 1.6)
- 10'2" x 7'2" (3.1 x 2.2)

Area Map



Floor Plans



Energy Efficiency Graph

