

Whitfield Street

| Fitzrovia | W1T

PropertyTime

EST 2008



£1,295,000

A spacious four bedroom duplex apartment with private balcony, reception with separate dining room situated within a well maintained and small building with lift and beautiful private courtyard.

Offering an enviable location ideally situated in Fitzrovia, just a short distance from Marylebone and nearby to Regents Park, UCL & Great Portland Hospitals with the trendy and stylish restaurants and cafés of Charlotte Street and Goodge Street moments away.

The apartment consists of contemporary, quality, and neutral furnishings and fittings throughout, with a separate 'eat-in' kitchen (top class stainless steel appliances), delightfully split with reception, separate dining room, guest cloakroom and large study on the lower floor and three good size bedrooms (master en-suite), two bathrooms and balcony on the upper floors.



2

4

2

020 7794 2008 www.property-time.co.uk info@property-time.co.uk

None of the information within these details can be relied upon as being an actual representation of the property

Reception Room

16'3 x 12'2 (4.95m x 3.71m)

Kitchen

12'2 x 9'9 (3.71m x 2.97m)

Dining Room

15'4 x 12'1 (4.67m x 3.66m)

Master Bedroom

18'3 x 10'8 (5.56m x 3.25m)

Bedroom 2

14'4 x 10'2 (4.37m x 3.10m)

Bedroom 3

10'2 x 9'4 (3.10m x 2.84m)

Bedroom 4

10'11 x 9'8 (3.33m x 2.95m)

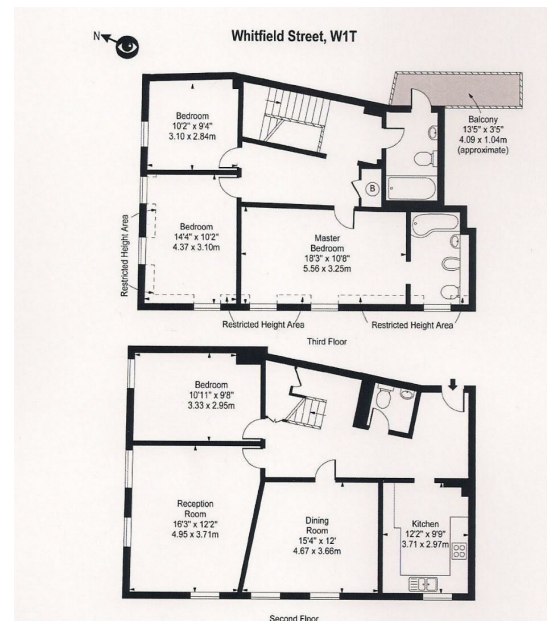
Balcony

13'5 x 3'5 (4.09m x 1.04m)

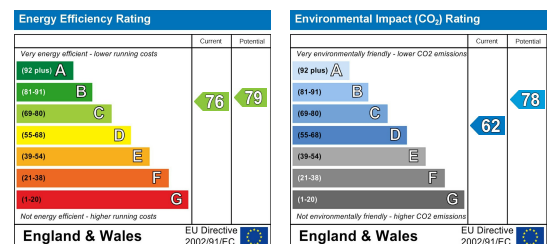
Area Map



Floor Plans



Energy Efficiency Graph



88 Belsize Lane, Hampstead, London, NW3 5BE

020 7794 2008 www.property-time.co.uk info@property-time.co.uk

None of the information within these details can be relied upon as being an actual representation of the property