



Meshaw Crescent

Abington Vale, Northampton

oriordanbond
SALES & LETTINGS



Meshaw Crescent

Abington Vale
NN3 3NF

Price
£320,000

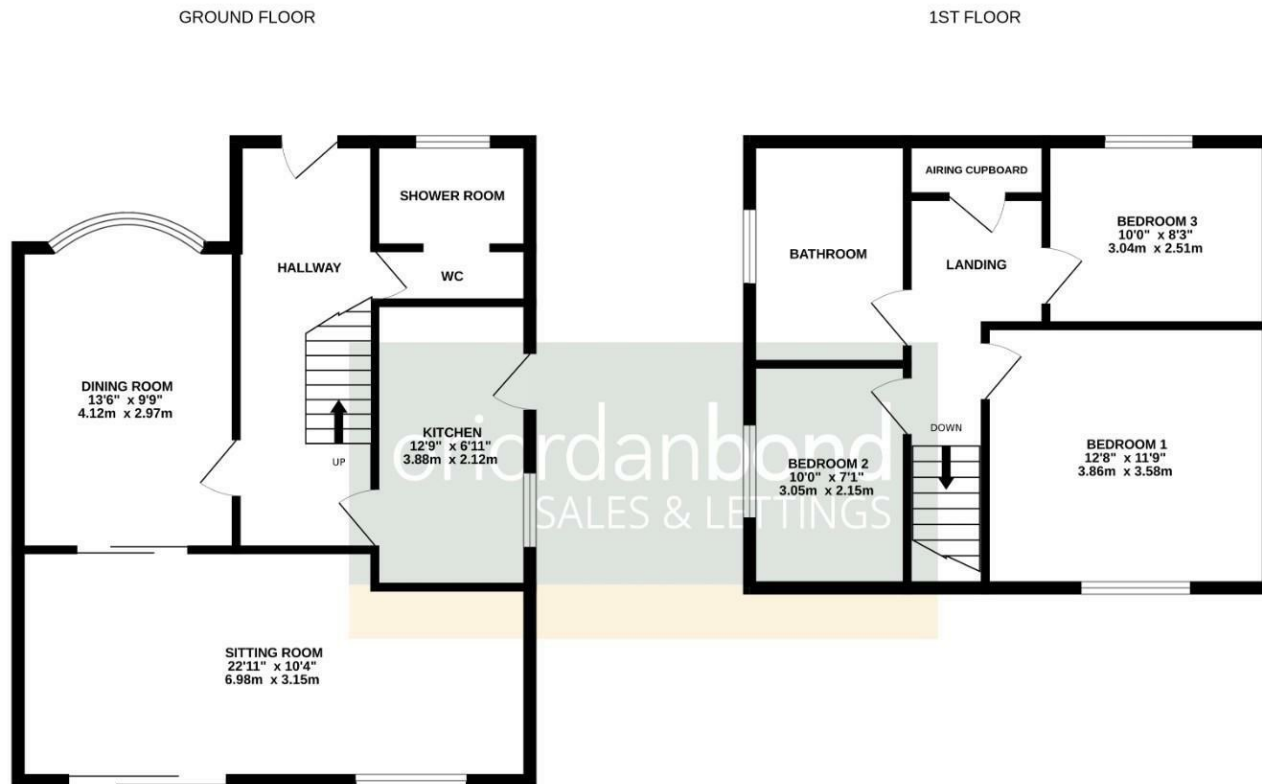
A three bedroom semi-detached home situated within the very heart of Abington Vale. Offered to the market with no upper chain, the property occupies a generous plot and has the rare benefit of a double garage as well as generous off road parking.

The accommodation comprises entrance hall, ground floor shower room/wc, sitting room, dining room, kitchen, three first floor bedrooms and a family bathroom. Externally are well maintained front and rear gardens and an ample driveway providing off road parking leading to a double garage. Further benefits include gas radiator heating and double glazing. (C/1078/L)

- Three bedroom semi-detached home
- Two reception rooms
- Separate shower room and family bathroom
- Well maintained gardens
- Ample off road parking and double garage
- No onward chain







TOTAL FLOOR AREA : 1078 sq.ft. (100.1 sq.m.) approx.

Whilst every attempt has been made to ensure the accuracy of the floorplan contained here, measurements of doors, windows, rooms and any other items are approximate and no responsibility is taken for any error, omission or mis-statement. This plan is for illustrative purposes only and should be used as such by any prospective purchaser. The services, systems and appliances shown have not been tested and no guarantee as to their operability or efficiency can be given.
Made with Metropix ©2025



Additional information

- Council Tax Band: C
- Energy Efficiency Rating: D

Viewing

Viewing strictly by appointment – details below

Disclaimer

O'Riordan Bond Estate Agents Limited has not tested apparatus, equipment, fittings or services and so cannot verify they are in working order. The buyer is advised to obtain verification from their solicitor or surveyor.

O'Riordan Bond Abington Vale Sales

01604 639007

abingtonvale@oriordanbond.co.uk

