

49 Eardley Crescent, - London  
- £600,000



BEAUFORT GREEN

263 New Kings Road  
Fulham  
London  
SW6 4RB





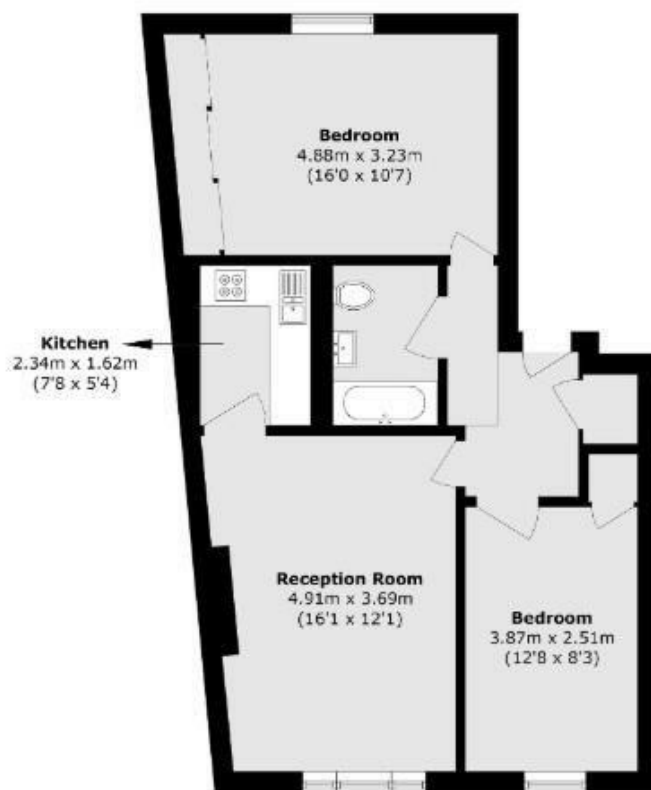




# The Details

sq ft

2 Bedroom | 1 Bathroom | 1 Reception | Leasehold - Share of Freehold



Total area (approx.): 59.3 sq. m (638.3 sq. ft)

A generous, two double bedroom apartment in this attractive period conversion. The property has separate kitchen living room and storage throughout. The property is located moments away from Earls Court Station and the Fulham Road.