

Apartment

APARTMENT 307, BLOCK A, LOCAL CRESCENT 2 HULME STREET, SALFORD, M5 4ZB

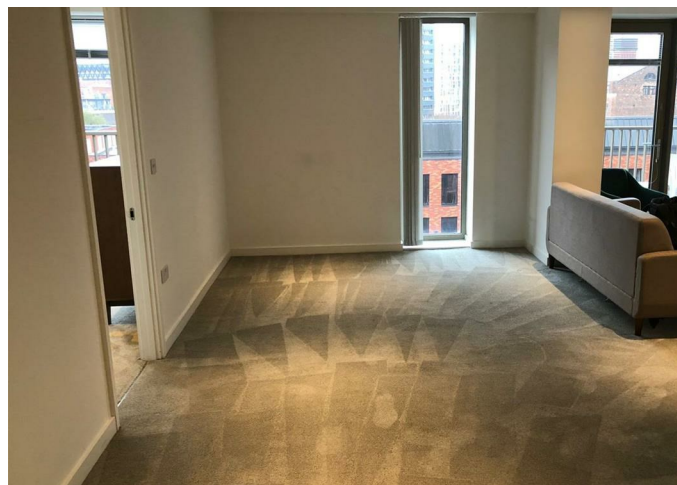
Per month

£1,450

FEATURES

 **Reposit**

Rent without a deposit



 **CITY COMFORT**
UK Properties Specialist



2 Bedroom Apartment located in Salford

*** Zero Deposit Option (Reposit) Available!! ***

Welcome to this stunning new build house located on Hulme Street in the vibrant area of Salford. This contemporary property, completed in 2021, offers a modern living experience with a generous space of 947 square feet.

With two well-proportioned bedrooms, this home is perfect for small families, couples, or individuals seeking extra space. The two bathrooms provide added convenience, ensuring that morning routines and guest visits are effortlessly managed.

The design of the house reflects a commitment to quality and modern aesthetics, making it an ideal choice for those who appreciate contemporary living. The open-plan layout allows for a seamless flow between the living, dining, and kitchen areas, creating a welcoming environment for both relaxation and entertaining.

Situated in Salford, this property benefits from excellent transport links and local amenities, making it easy to access the bustling city life while enjoying the comforts of a residential neighbourhood.

Call us on

01617061208

sales@citycomfortapartments.co.uk

<https://www.citycomfortapartments.co.uk/>

Council Tax Band

C

Energy Efficiency Rating		
	Current	Potential
Very energy efficient - lower running costs		
(92 plus) A		
(81-91) B		
(69-80) C	84	84
(55-68) D		
(39-54) E		
(21-38) F		
(1-20) G		
Not energy efficient - higher running costs		
England & Wales		EU Directive 2002/91/EC

Agents Note: Whilst every care has been taken to prepare these particulars, they are for guidance purposes only. All measurements are approximate and are for general guidance purposes only and whilst every care has been taken to ensure their accuracy, they should not be relied upon and potential buyers are advised to recheck the measurements.