



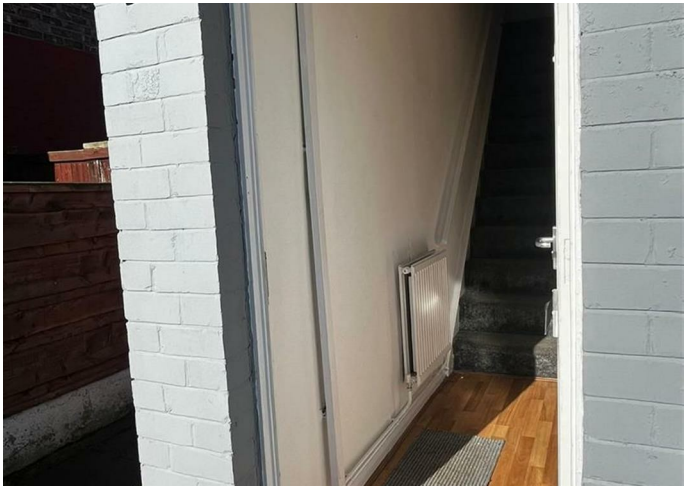
House - End Terrace

# 12 MATLOCK ROAD, STRETTFORD, M32 9QB

Per month

**£1,250**

FEATURES



**CITY COMFORT**  
UK Properties Specialist



# 2 Bedroom House - End Terrace located in Stretford

Nestled on the charming Matlock Road in Stretford, this delightful end-terrace house offers a perfect blend of comfort and convenience. With a generous living space of 883 square feet, this property is ideal for small families, couples, or individuals seeking a cosy home.

The house features a welcoming reception room, providing an inviting space for relaxation and entertaining guests. The two well-proportioned bedrooms are designed to offer a peaceful retreat, ensuring restful nights and a tranquil atmosphere. The bathroom is thoughtfully appointed, catering to all your daily needs.

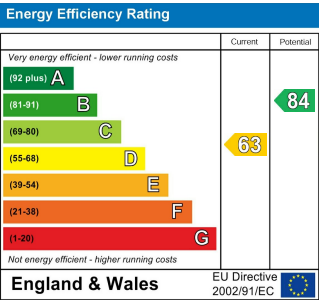
This home retains a sense of character while offering the potential for modernisation to suit your personal taste. The end-terrace position allows for added privacy and a sense of space, making it a desirable choice for those looking to settle in a friendly neighbourhood.

Stretford is known for its vibrant community and excellent local amenities, including shops, parks, and schools, all within easy reach. This property presents a wonderful opportunity to enjoy comfortable living in a well-connected area.

Whether you are a first-time buyer or looking to downsize, this charming end-terrace house on Matlock Road is a must-see. Embrace the chance to make this lovely property your new home.

Call us on  
**01617061208**  
[sales@citycomfortapartments.co.uk](mailto:sales@citycomfortapartments.co.uk)  
<https://www.citycomfortapartments.co.uk/>

Council Tax Band  
**A**



Agents Note: Whilst every care has been taken to prepare these particulars, they are for guidance purposes only. All measurements are approximate and are for general guidance purposes only and whilst every care has been taken to ensure their accuracy, they should not be relied upon and potential buyers are advised to recheck the measurements.