

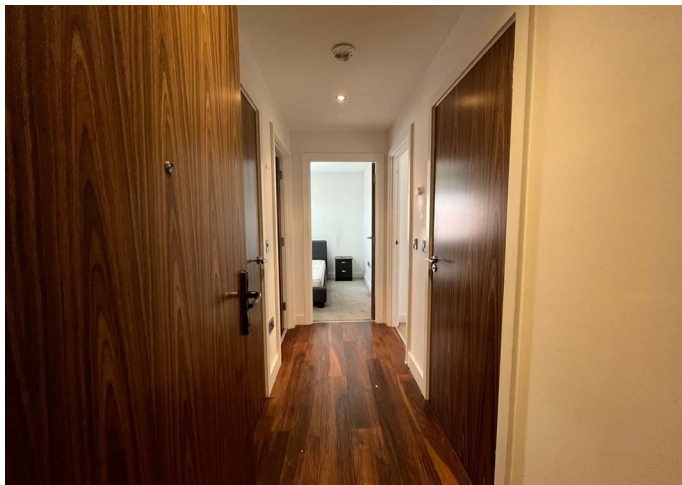
Flat

**B 905 , BLOCK B,
WILBURN BASIN
ORDSALL LANE,
SALFORD, M5 4XS**

Per month

£1,450

FEATURES



CITY COMFORT
UK Properties Specialist



2 Bedroom Flat located in Salford

Nestled in the vibrant area of Ordsall Lane, Salford, Wilburn Basin offers a perfect blend of modern living and convenience. Spanning an impressive 710 square feet, the property features two well-proportioned bedrooms, making it an ideal choice for couples, small families, or professionals seeking a comfortable home.

The flat boasts two bathrooms, ensuring ample facilities for residents and guests alike. This thoughtful layout enhances the overall functionality of the space, providing privacy and comfort. The contemporary design is complemented by an abundance of natural light, creating a warm and inviting atmosphere throughout.

- 9/F Viewing With Balcony
- 24/7 Reception
- Gym
- Next To The Regent Retail Park

Call us on

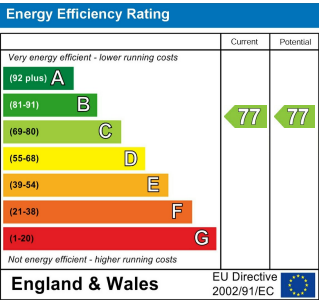
01617061208

sales@citycomfortapartments.co.uk

<https://www.citycomfortapartments.co.uk/>

Council Tax Band

C



Agents Note: Whilst every care has been taken to prepare these particulars, they are for guidance purposes only. All measurements are approximate and are for general guidance purposes only and whilst every care has been taken to ensure their accuracy, they should not be relied upon and potential buyers are advised to recheck the measurements.