

LEASEHOLD



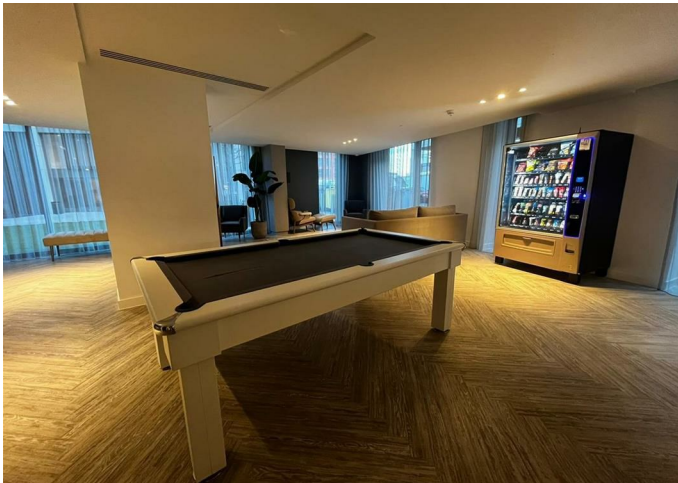
Flat

# APARTMENT 229, BLOCK C LOCAL CRESCENT 14 HULME STREET, SALFORD, M5 4ZG

Asking price

## £300,000

FEATURES



**CITY COMFORT**  
UK Properties Specialist



# 2 Bedroom Flat located in Salford

Luxury apartment which located in Salford, connected to the Spinningfield and city centre area.  
12 mins walk to the Regent Retail Park And Salford Crescent Station.  
Building in high end standard design by Salboy Development, 24/7 Concierge service, gym, swimming pool & Sauna.  
Good for both investor and self occupied.

Currently rental £1300/month till May/2024.  
Service Charge: £2567pa  
Ground Rent: £250 pa  
Lease: 250 Years from 2019  
Council Tax: C  
Building Management: Urban Bubble  
EPC: C

Call us on

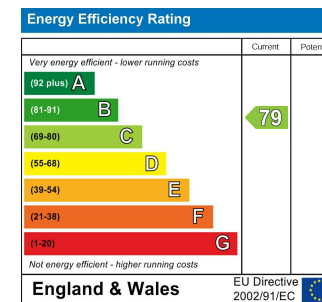
**01617061208**

[sales@citycomfortapartments.co.uk](mailto:sales@citycomfortapartments.co.uk)

<https://www.citycomfortapartments.co.uk/>

**Council Tax Band**

**C**



Agents Note: Whilst every care has been taken to prepare these particulars, they are for guidance purposes only. All measurements are approximate and are for general guidance purposes only and whilst every care has been taken to ensure their accuracy, they should not be relied upon and potential buyers are advised to recheck the measurements.