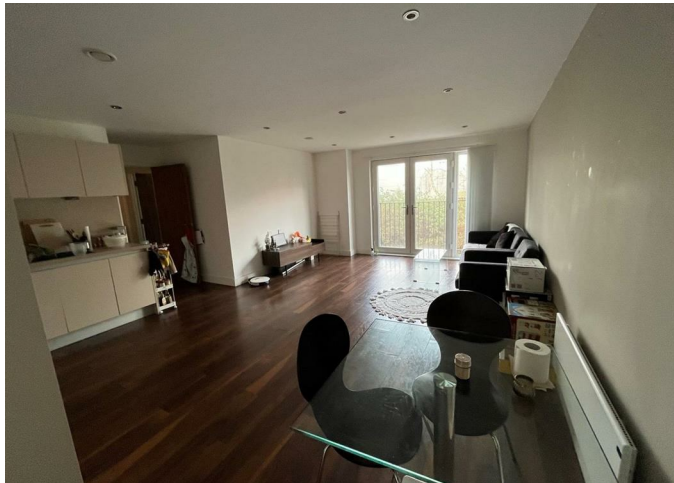


LEASEHOLD



Flat

**B 201, BLOCK B,
WILBURN BASIN
ORDSALL LANE,
SALFORD, M5 4XR**

Asking price

£230,000

FEATURES



CITY COMFORT
UK Properties Specialist



2 Bedroom Flat located in Salford

City Comfort is pleased to bring this amazing 2 beds apartment at Wilburn Basin Development to the market. Conveniently situated alongside River Irwell, the development is within easy reach to Manchester City Centre. Regent Retail Park is just opposite the development where there are supermarket, cafe and shops. The apartment briefly comprises of : Entrance hallway, utility room, family bathroom, master bedroom with ensuite, a second bedroom, open plan kitchen equipped with intergrated kitchen appliances and a living lounge. The development itself offers 24/7 concierge service, residents' gym and cinema. Currently tenant in situ acheiving a monthly rental income of £1200. NO CHAIN.

Call us on

01617061208

sales@citycomfortapartments.co.uk

<https://www.citycomfortapartments.co.uk/>

Council Tax Band

C



Energy Efficiency Rating		Current	Potential
<i>Very energy efficient - lower running costs</i>			
(92 plus) A			
(81-91) B		84	
(69-80) C			
(55-68) D			
(39-54) E			
(21-38) F			
(1-20) G			
<i>Not energy efficient - higher running costs</i>			
England & Wales		EU Directive 2002/91/EC	

Agents Note: Whilst every care has been taken to prepare these particulars, they are for guidance purposes only. All measurements are approximate and are for general guidance purposes only and whilst every care has been taken to ensure their accuracy, they should not be relied upon and potential buyers are advised to recheck the measurements.

 **CITY COMFORT**
UK Properties Specialist

