



Eatonville Road

Balham, SW17

£5,000 per month
(£1,153 per week)

Introducing this charming end of terrace period house boasting 5 bedrooms, located in a sought-after neighbourhood.

CHESTERTONS



Eatonville Road

Balham, SW17

- 4 – 5 Bedroom
- 2 Bathrooms
- Garden
- Furnished

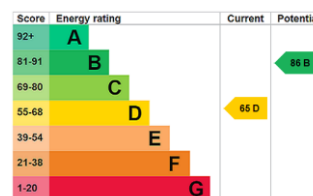


Introducing this charming end of terrace period house boasting 5 bedrooms, located in a sought-after neighbourhood. This property offers ample living space ideal for families or sharers. The elegant interior is complemented by a garden, perfect for outdoor relaxation and entertainment.

Conveniently equipped with a garage and allocated off-road parking, this home ensures practicality alongside its charm. The property's attractive features, including its period design and spacious rooms, offer a blend of character and modern comfort.

Situated in a desirable location, this property benefits from easy

Minimum Term: months
Deposit Required: £0.00
Local Authority: London Borough of Wandsworth
Council Tax Band: F
EPC Rating: D
Furnished



Chestertons Wandsworth Common Lettings

[chestertons.co.uk](https://www.chestertons.co.uk)

Additional tenant charges apply (fees apply to non-AST tenancies only)
 Tenancy Agreement Fee: £300
 References per Tenant/Guarantor: £60
 Inventory check (approx. £100 – £250 inc. VAT)
[chestertons.co.uk/property-to-rent/applicable-fees](https://www.chestertons.co.uk/property-to-rent/applicable-fees)

Eatonville Road, SW17

Approximate gross internal area

179.63 sq m / 1934 sq ft

(Including Eaves Storage & Garage)

Eaves Storage : 9.87 sq m / 106 sq ft

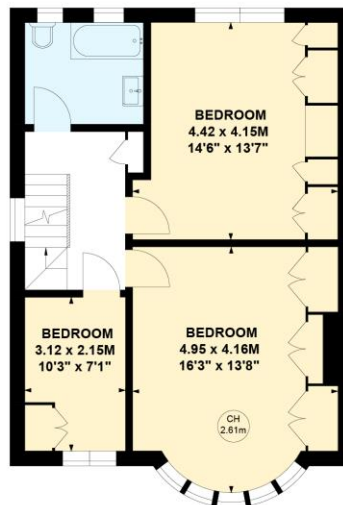
Garage : 13.66 sq m / 147 sq ft

Key :

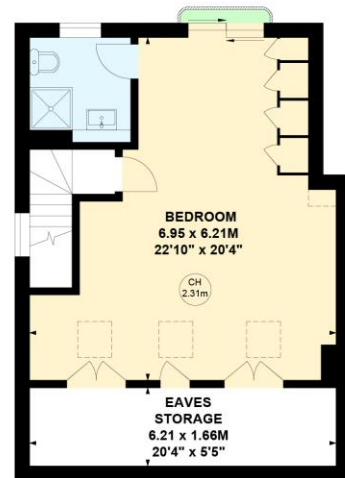
CH - Ceiling Height



Ground Floor



First Floor



Second Floor

Not to scale, for guidance only and must not be relied upon as a statement of fact.

All measurements and areas are approximate only

