



Dalebury Road

Wandsworth Common, SW17

£2,400 per month
(£553 per week)

A beautifully presented ground floor conversion flat set within an attractive double fronted Victorian property close to Wandsworth Common.

CHESTERTONS



Dalebury Road

Wandsworth Common, SW17

- A beautifully presented ground floor conversion flat
- Set within an attractive double fronted Victorian property
- Close to Wandsworth Common
- Finished to high specification
- Neutral décor and contemporary fittings combined period features
- A stunning and spacious reception room with space for a dining table
- Modern kitchen with a stylish breakfast bar
- Two double bedrooms



A beautifully presented ground floor conversion flat set within an attractive double fronted Victorian property close to Wandsworth Common. The flat is finished to high specification with neutral décor and contemporary fittings combined with the high ceilings and large windows of a period property. The property comprises a stunning and spacious reception room with large sash windows, solid wood flooring and space for a dining table, a modern kitchen with a stylish breakfast bar looking through to the reception room, two double bedrooms with access to the garden, a modern bathroom with a separate shower and a private garden which has been landscaped with a paved seating area leading to lawn and mature borders and trees. This fantastic property also benefits from extensive storage in

Minimum Term: 12 months
Deposit Required: five weeks
Local Authority: London Borough of Wandsworth
Council Tax Band: D
EPC Rating: D
Furnished, Part Furnished, Unfurnished

Score	Energy rating	Current	Potential
92+	A		
81-91	B		
69-80	C		77 C
55-68	D	67 D	
39-54	E		
21-38	F		
1-20	G		

Chestertons Wandsworth Common Lettings

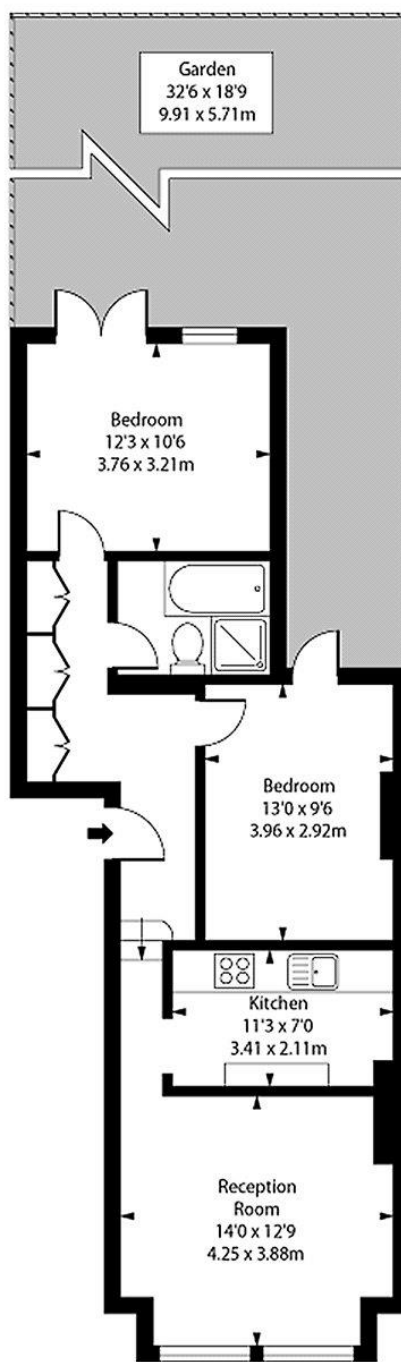
chestertons.co.uk

Additional tenant charges apply (fees apply to non-AST tenancies only)
 Tenancy Agreement Fee: £300
 References per Tenant/Guarantor: £60
 Inventory check (approx. £100 – £250 inc. VAT)
chestertons.co.uk/property-to-rent/applicable-fees

James Pendleton



Dalebury Road, SW17



Ground Floor

Approx Gross Internal Area **732 Sq Ft - 68 Sq M**

For Illustration Purposes Only - Not to Scale

Ref: No. 20007

