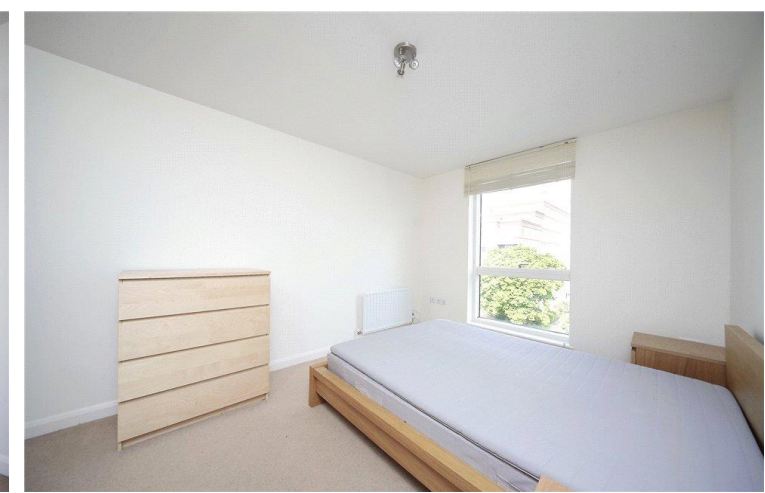
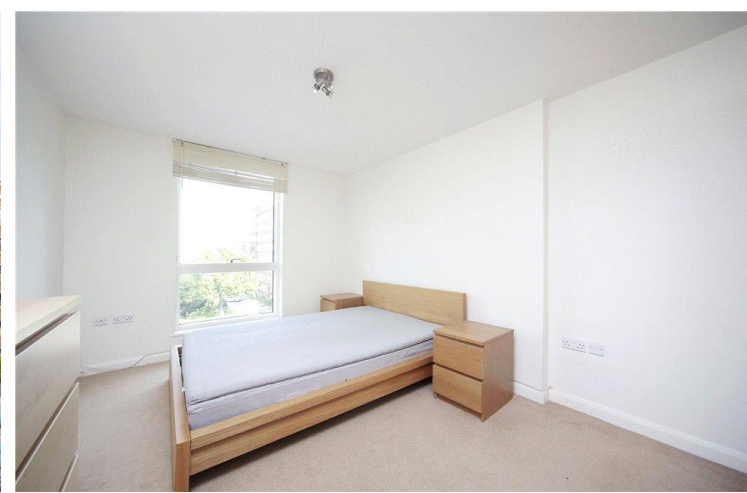




Elmfield Road
Balham, SW17

CHESTERTONS





A modern third floor flat set within an attractive development close to the amenities and transport links local to Balham and Tooting Bec.

- A modern third floor flat set within an attractive development
- Walking distance to Balham Station
- Light and airy accommodation with neutral decor, wood flooring and contemporary fittings
- Spacious open-plan reception room

£2,500 pcm

Additional tenant charges apply (fees apply to non-AST tenancies only)

Tenancy Agreement Fee: £300

References per Tenant/Guarantor: £60

Inventory check (approx. £100 – £250 inc. VAT)

chestertons.co.uk/property-to-rent/applicable-fees

Energy Efficiency Rating		Current	Potential
100-105	A		
81-100	B		
62-81	C	82	82
43-62	D		
25-43	E		
10-25	F		
1-10	G		

Not energy efficient - higher running costs

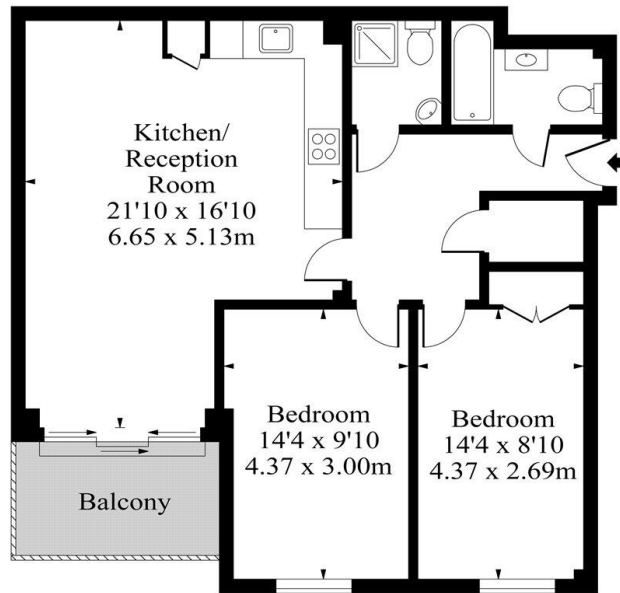
England, Scotland & Wales EU Directive 2002/91/EC

Minimum Term: 12 months
Deposit Required: £2,884.62
Local Authority: Wandsworth
Council Tax Band: D
EPC Rating: B
Furnished

Chestertons JP Wandsworth Common Lettings

chestertons.co.uk

Cherwell House, SW17



Third Floor

Approx Gross Internal Area **781 Sq Ft - 72.55 Sq M**

For Illustration Purposes Only - Not to Scale

Ref: No. 26299

