



St James's Drive
Wandsworth Common, SW12

CHESTERTONS





A recently refurbished second floor flat close to Wandsworth Common.

- A recently refurbished second floor flat
- Close to Wandsworth Common
- Neutral decor
- Bright reception room with wood floorings
- Modern kitchen
- Two double bedrooms with built-in wardrobes

£2,100 pcm

Additional tenant charges apply (fees apply to non-AST tenancies only)

Tenancy Agreement Fee: £300

References per Tenant/Guarantor: £60

Inventory check (approx. £100 – £250 inc. VAT)

chestertons.co.uk/property-to-rent/applicable-fees

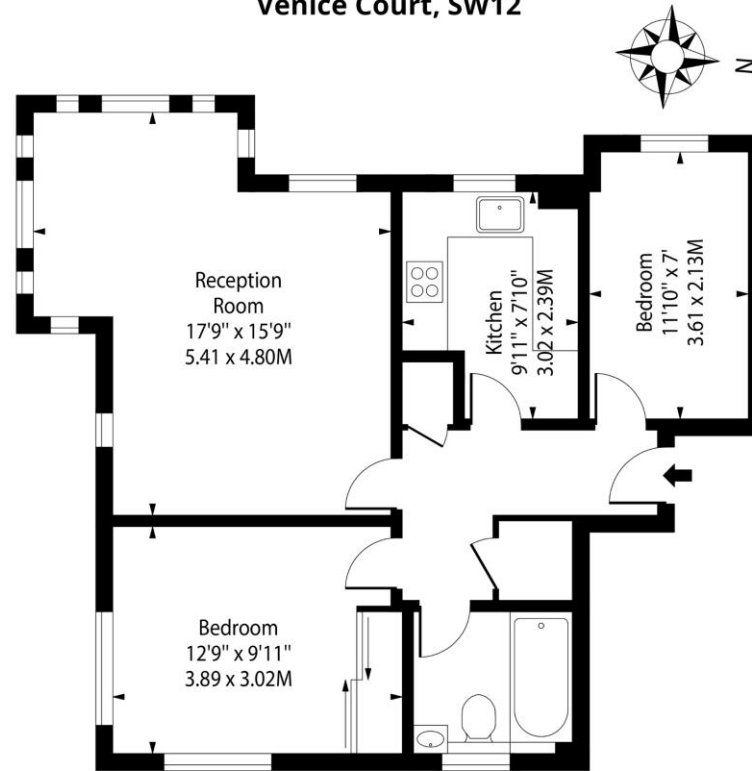
Energy Efficiency Rating		Current	Potential
90-100	A		
81-89	B		
72-80	C	75	76
63-71	D		
54-62	E		
45-53	F		
35-44	G		
Not energy efficient - higher running costs			
England, Scotland & Wales		EU Directive 2002/91/EC	

Minimum Term: months
Deposit Required: £2,423.08
Local Authority:
Council Tax Band: C
EPC Rating: C
Unfurnished

Chestertons JP Wandsworth Common Lettings

chestertons.co.uk

Venice Court, SW12



Second Floor

Approx Gross Internal Area **656 Sq Ft - 60.94 Sq M**

Drawn in accordance with IPMS 3B: Residential

For Illustration Purposes Only - Not to Scale

Ref: No. 50420

