



Library Building  
Clapham, SW4

CHESTERTONS





An immaculately presented apartment located in a newly built development located in the heart of Clapham High Street.

- An immaculately presented apartment
- Located in a newly built development located in the heart of Clapham High Street
- Open plan reception room/modern kitchen with integrated appliances
- Large bedroom with built in wardrobe

**£484.62 per week (£2,100 pcm)**

Additional tenant charges apply (fees apply to non-AST tenancies only)

Tenancy Agreement Fee: £300

References per Tenant/Guarantor: £60

Inventory check (approx. £100 – £250 inc. VAT)

[chestertons.co.uk/property-to-rent/applicable-fees](https://www.chestertons.co.uk/property-to-rent/applicable-fees)

**Minimum Term:** 12 months

**Deposit Required:** £2,423.08

**Local Authority:** Lambeth

**Council Tax Band:** D

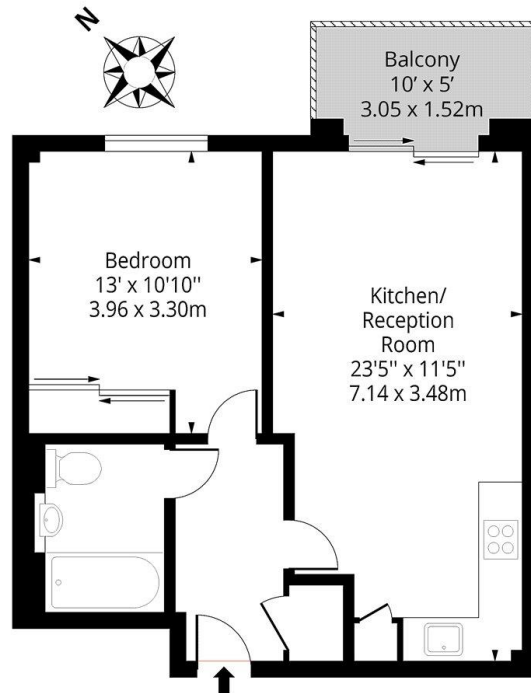
**EPC Rating:** C

**Furnished**

*Chestertons JP Clapham Common Lettings*

[chestertons.co.uk](https://www.chestertons.co.uk)

## Library Building, SW4



**Third Floor**

Approx Gross Internal Area **516 Sq Ft - 47.93 Sq M**

For Illustration Purposes Only - Not To Scale

Ref: No. 35506

