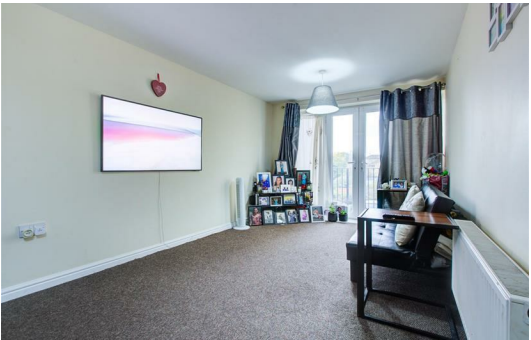


FLOOR 1

Directions

Contact
Lodge Barn Manor Road Lambourne End
Essex
RM4 1NA

E: info@stirlingestate.com
T: 07718 232857
stirlingestate.com



**1 Bed
Flat - Purpose Built
located in**



131 Blackthorn Road

Ilford
IG1 2DZ

£210,000
Leasehold

1

1

1

C

A fantastic one bedroom first floor flat located perfectly for commuting into the city. Just an 8 minute walk from Barking station and convenient bus stops right outside.

This property features a spacious balcony and large living area, open hallway, large bedroom, great sized kitchen and stylish bathroom. Perfect for First time buyers looking to be close to the city or as a great investment opportunity.

The property also includes a parking space and the building includes a lift. Situated at the end of a quiet road, this flat provides easy accessibility.

Lease: 103 years cost to extend £4000-£5000
Service Charge:£1721.34
Ground Rent:£200

Enquire now to get booked in before it goes!



Energy Efficiency Rating		Current	Potential
Very energy efficient - lower running costs			
(92 plus)	A	78	
(81-91)	B		
(69-80)	C		
(55-68)	D		
(39-54)	E		
(21-38)	F		
(1-20)	G		
Not energy efficient - higher running costs			
England & Wales		EU Directive 2002/91/EC	