



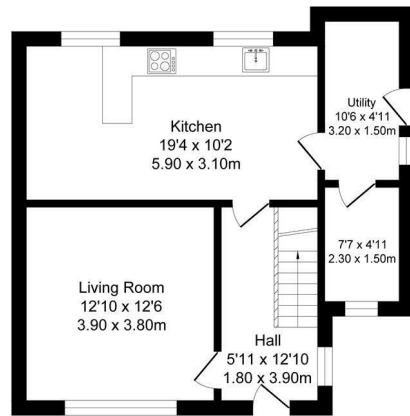
£200,000

Primrose Drive

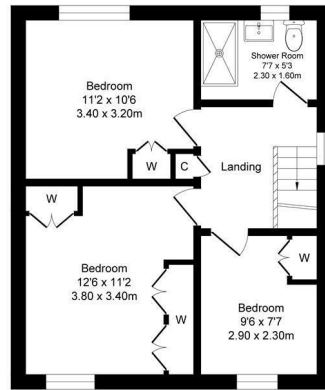
Bury, BL9 7SR

6 Primrose Drive, Bury, UK BL9 7SR
Total Approx. Floor Area 1006 Sq.ft. (93.5 Sq.M.)

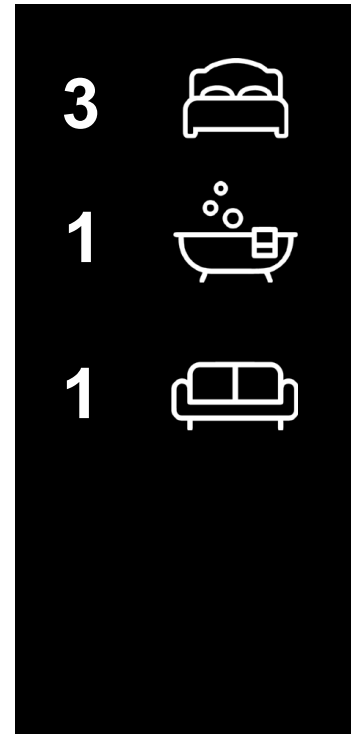
Surveyed and drawn by Lens Media for illustrative purposes only. Not to scale. Whilst every attempt was made to ensure the accuracy of the floor plan, all measurements are approximate and no responsibility is taken for any error.



Ground Floor
Approx. Floor
Area 553 Sq.Ft
(51.4 Sq.M.)



First Floor
Approx. Floor
Area 453 Sq.Ft
(42.1 Sq.M.)



Energy Efficiency Rating		
	Current	Potential
Very energy efficient - lower running costs		
(92 plus) A		
(81-91) B		86
(69-80) C		
(55-68) D	66	
(39-54) E		
(21-38) F		
(1-20) G		
Not energy efficient - higher running costs		
England & Wales		
EU Directive 2002/91/EC		

Agents Note: Whilst every care has been taken to prepare these particulars, they are for guidance purposes only. All measurements are approximate and are for general guidance purposes only and whilst every care has been taken to ensure their accuracy, they should not be relied upon and potential buyers/tenants are advised to recheck the measurements



OFFICE ADDRESS
24 Mountbatten Close
Unsworth
Bury
BL9 8PU

OFFICE DETAILS
01617061915
info@atobeeproperty.com