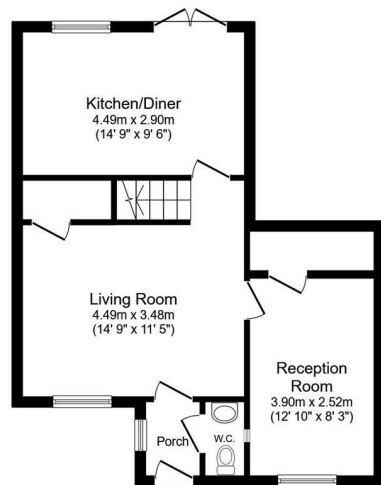




£220,000

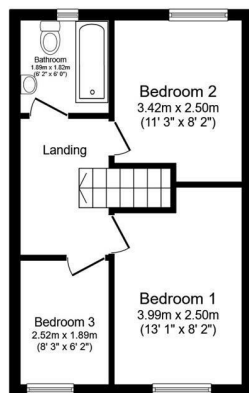
Lowry Way

Rochdale, OL11 2BD



Ground Floor

Floor area 49.3 m² (531 sq.ft.)

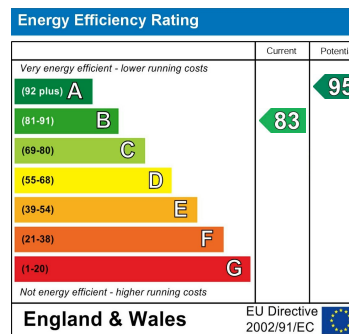
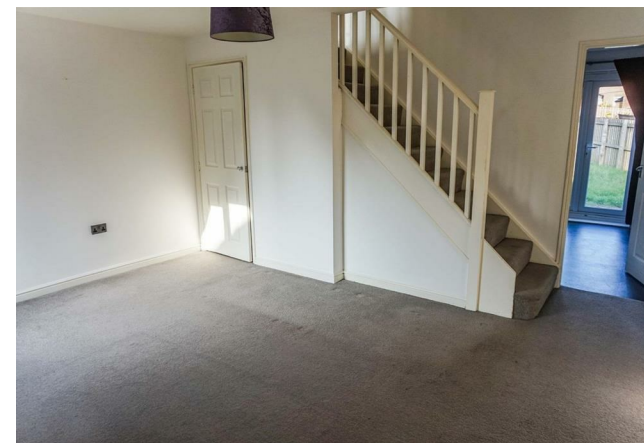
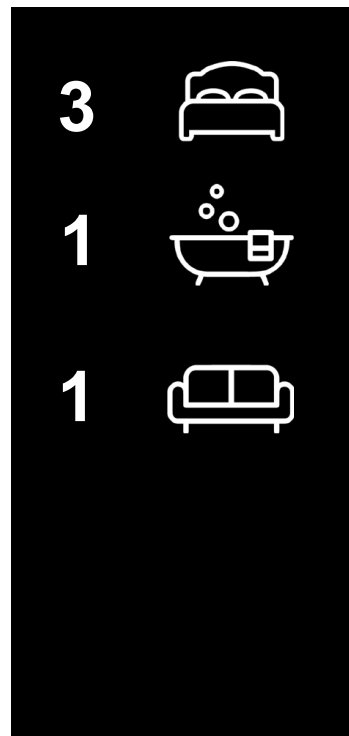


First Floor

Floor area 33.1 m² (357 sq.ft.)

TOTAL: 82.4 m² (887 sq.ft.)

This floor plan is for illustrative purposes only. It is not drawn to scale. Any measurements, floor areas (including any total floor area), openings and orientations are approximate. No details are guaranteed, they cannot be relied upon for any purpose and do not form any part of any agreement. No liability is taken for any error, omission or misstatement. A party must rely upon its own inspection(s). Powered by www.propertybox.io



Agents Note: Whilst every care has been taken to prepare these particulars, they are for guidance purposes only. All measurements are approximate and are for general guidance purposes only and whilst every care has been taken to ensure their accuracy, they should not be relied upon and potential buyers/tenants are advised to recheck the measurements



OFFICE ADDRESS
24 Mountbatten Close
Unsworth
Bury
BL9 8PU

OFFICE DETAILS
01617061915
info@atobeeproperty.com