

**£300,000**

**Tulip Close**

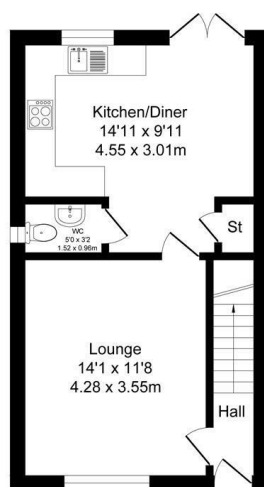
Salford, M6 6LP



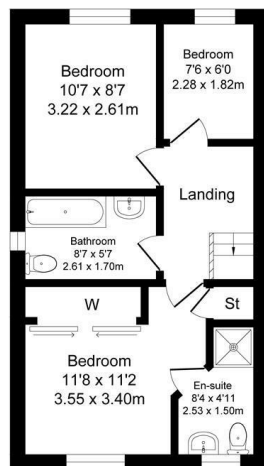
## Tulip Close

### Total Approx. Floor Area 837 Sq.ft. (77.8 Sq.M.)

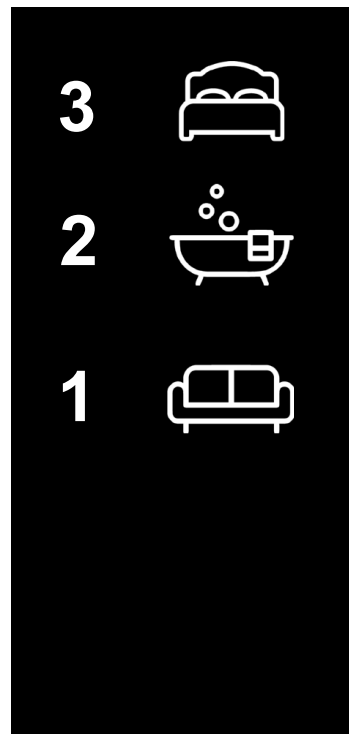
Surveyed and drawn by Lens Media for illustrative purposes only. Not to scale. Whilst every attempt was made to ensure the accuracy of the floor plan, all measurements are approximate and no responsibility is taken for any error.



Ground Floor  
Approx. Floor Area 419 Sq.Ft (38.9 Sq.M.)



First Floor  
Approx. Floor Area 419 Sq.Ft (38.9 Sq.M.)



Energy Efficiency Rating		
	Current	Potential
Very energy efficient - lower running costs		
(92 plus) <b>A</b>		96
(81-91) <b>B</b>	84	
(69-80) <b>C</b>		
(55-68) <b>D</b>		
(39-54) <b>E</b>		
(21-38) <b>F</b>		
(1-20) <b>G</b>		
Not energy efficient - higher running costs		
England & Wales		
EU Directive 2002/91/EC		



Agents Note: Whilst every care has been taken to prepare these particulars, they are for guidance purposes only. All measurements are approximate and are for general guidance purposes only and whilst every care has been taken to ensure their accuracy, they should not be relied upon and potential buyers/tenants are advised to recheck the measurements



**OFFICE ADDRESS**  
24 Mountbatten Close  
Unsworth  
Bury  
BL9 8PU

**OFFICE DETAILS**  
01617061915  
info@atobeeproperty.com