



OFFERS OVER

£325,000

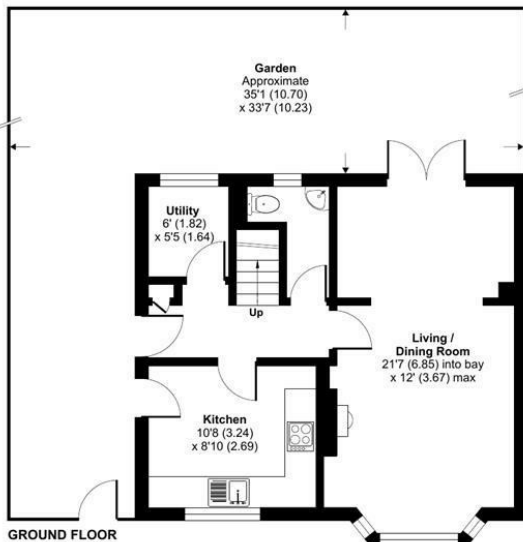
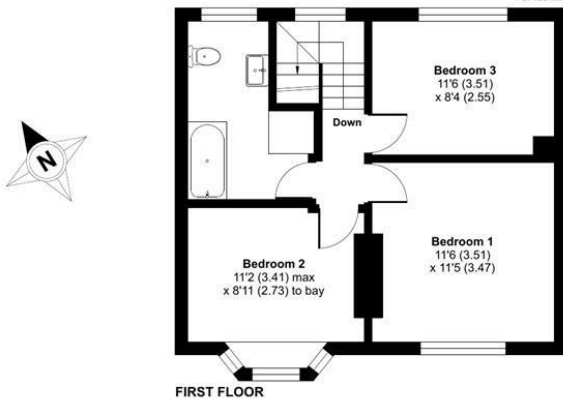
Barlow Hall Road

Manchester, M21 7JJ

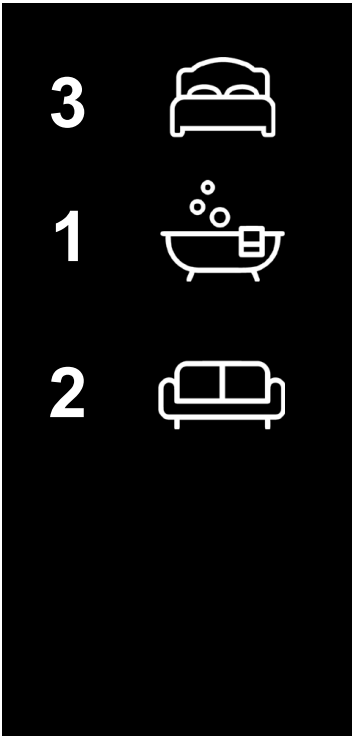
Barlow Hall Road, Manchester, M21

Approximate Area = 962 sq ft / 89.3 sq m

For identification only - Not to scale



Floor plan produced in accordance with RICS Property Measurement Standards incorporating International Property Measurement Standards (IPMS2 Residential). © nichicom 2025. Produced for A to Bee Property. REF: 1247440



Energy Efficiency Rating		Current	Potential
Very energy efficient - lower running costs			
(92 plus) A			84
(81-91) B			
(69-80) C			
(55-68) D		65	
(39-54) E			
(21-38) F			
(1-20) G			
Not energy efficient - higher running costs			
England & Wales		EU Directive 2002/91/EC	

Agents Note: Whilst every care has been taken to prepare these particulars, they are for guidance purposes only. All measurements are approximate and are for general guidance purposes only and whilst every care has been taken to ensure their accuracy, they should not be relied upon and potential buyers/tenants are advised to recheck the measurements



OFFICE ADDRESS
 24 Mountbatten Close
 Unsworth
 Bury
 BL9 8PU

OFFICE DETAILS
 01617061915
 info@atobeeproperty.com