



archer

& PARTNERS

- Bell & Pearson House
- Favoured Location
- Spacious
- Garage Leading To Driveway
- Built In Storage
- Close to Bus Routes
- Immediate Access To Residents Green
- Detached
- Immaculately Presented

## Harebeating Crescent, Hailsham

Freehold

£380,000

Offers in excess of



4 BEDROOM



1 RECEPTION

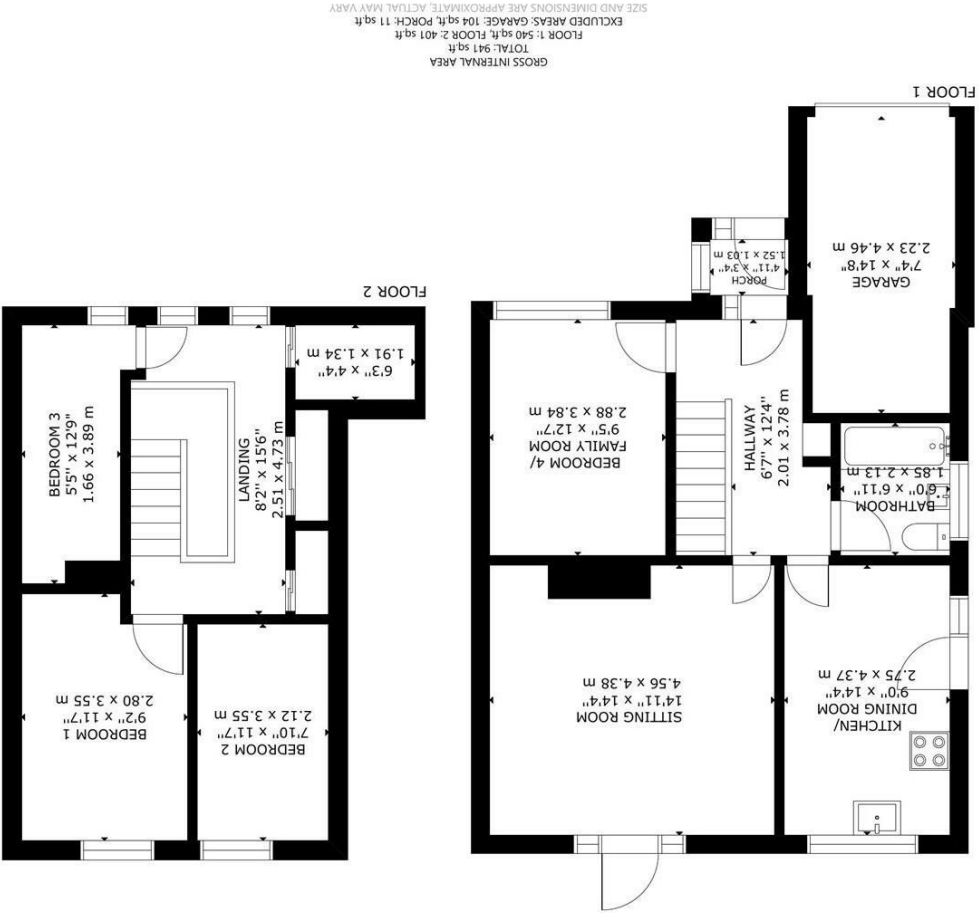
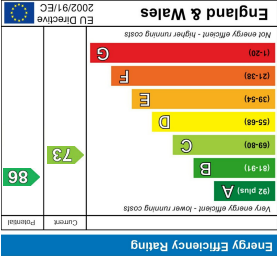


1 BATHROOM



1 GARAGE

Harebeating Crescent, Hailsham



Tel: 01323 483348

www.archerandpartners.com

48 High Street | Polegate | East Sussex | BN26 6AG

You may download, store and use the material for your own personal use and research. You may not republish, retransmit, redistribute or otherwise make the material available to any party or make the same available on any website, online service or bulletin board of your own or of any other party or make the same available in hard copy or in any other media without the website owner's express prior written consent. The website owner's copyright must remain on all reproductions of material taken from this website.



# Harebeating Crescent, Hailsham

## DESCRIPTION

Favoured Location | Bell & Pearson Built | Driveway & Garage | Additional Reception Room/Bedroom | Immediate Access To Residents Green | Downstairs Bathroom | Gas Central Heating |

Offered for sale chain free is this well appointed late 1950's built three/four bedroomed detached 'Bell and Pearson' built house complete with sunny aspect rear garden with immediate gated access onto the residents green while to the front is driveway parking and a garage.

Internally, the house is arranged with an entrance porch, inner hall ,kitchen, sitting room, bathroom, further reception room/bedroom, stairs to the first floor landing, three bedrooms and ample hall storage cupboards.

Harebeating Crescent is a road off Harebeating Drive, one of the towns most popular locations with its easy access to schools, amenities and bus routes.

To explore this wonderful opportunity please take a look at our professional photography before calling for an accompanied viewing.



# Harebeating Crescent, Hailsham

Entrance Porch 1.52 x1.03 (4'11" x3'4")

Entrance Hall 2.01 x 3.78 (6'7" x 12'4")

Kitchen 2.75 x 4.37 (9'0" x 14'4")

Sitting Room 4.56 x 4.38 (14'11" x 14'4")

Bedroom Four/ Second Reception Room 2.88 x 3.84 (9'5" x 12'7")

Bathroom 1.85 x 2.13 (6'0" x 6'11")

Garage 2.23 x 4.46 (7'3" x 14'7")

Stairs to First Floor 2.51 x 4.73 (8'2" x 15'6" )

Bedroom One 9'2 x 11'7 (29'6"6'6" x 36'1"22'11")

Bedroom Two 6'11 x 11'7 (19'8"36'1" x 36'1"22'11")

Bedroom Three 1.66 x 3.89 (5'5" x 12'9")

Cupboard 1.91 x 1.34 (6'3" x 4'4")

Residential Green