



Freehold

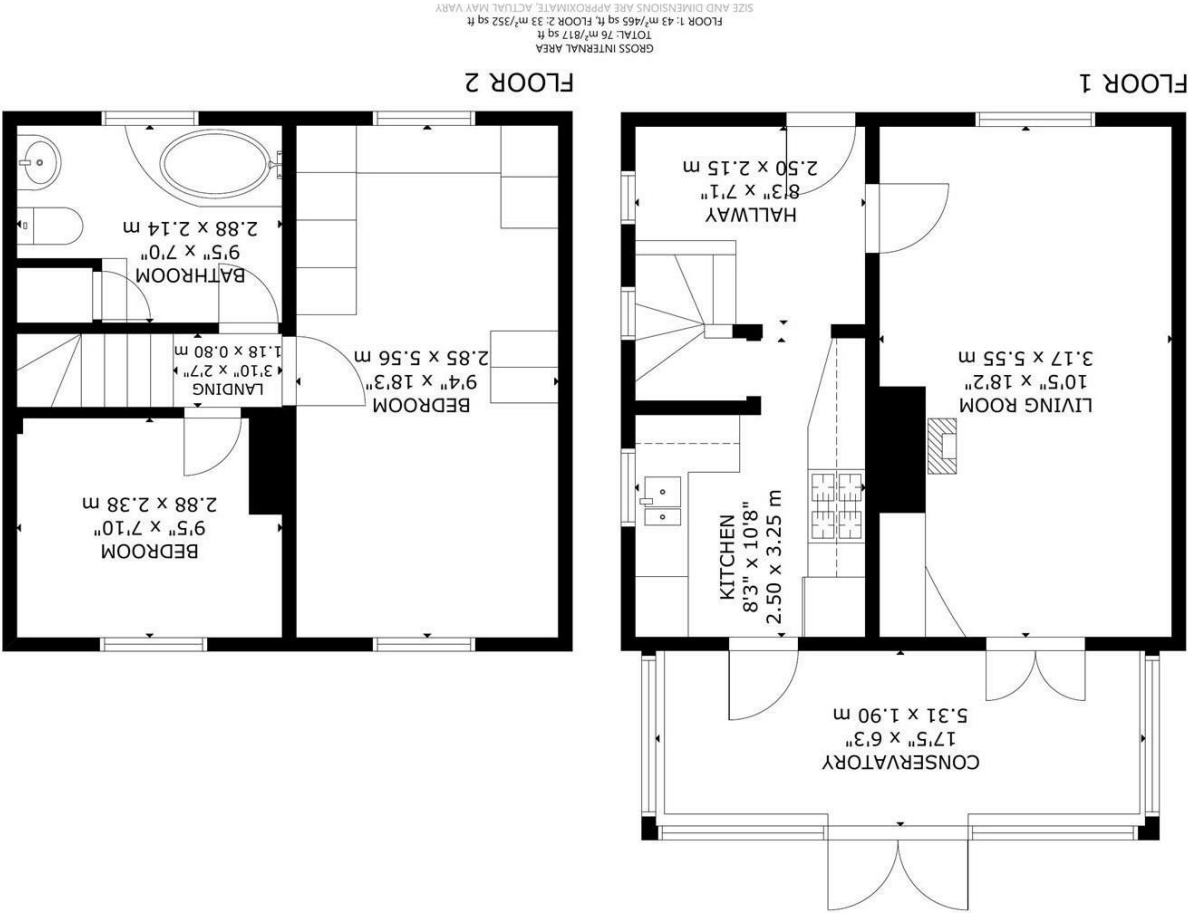
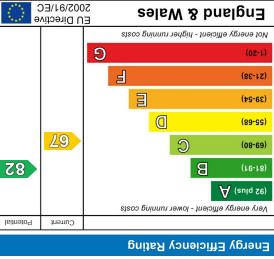
£240,000

2 BEDROOM 1 RECEPTION 1 BATHROOM 0 GARAGE

Knoll Crescent, Eastbourne



- 3D Virtual Tour
- 1950s Built House
- Gated Driveway
- Spacious 800+SQFT
- Potential To Improve
- Gas Central Heating
- Generous Garden
- uPVC Double Glazed
- Conservatory
- Amenities Nearby



48 High Street | Polegate | East Sussex | BN26 6AG  
Tel: 01323 483348  
www.archerandpartners.com

You may download, store and use the material for your own personal use and research. You may not republish, retransmit, redistribute or otherwise make the material available to any party or make the same available on any website, online service or bulletin board of your own or of any other party or make the same available in hard copy or in any other media without the website owner's express prior written consent. The website owner's copyright must remain on all reproductions of material taken from this website.



Knoll Crescent, Eastbourne

DESCRIPTION

3D Virtual Tour | Spacious Two Bedroomed House | Generous Garden | Gated Driveway | Conservatory | Gas Central Heating | uPVC Double Glazing | Amenities Nearby | Potential To Improve |

Nestled within the sought-after Knoll Crescent, this two-bedroom semi-detached home offers a spacious and versatile living environment, complete with a conservatory that enjoys views over the generous rear garden.

The well-arranged accommodation comprises an entrance hall, a dual-aspect lounge-dining room, and a kitchen on the ground floor. Upstairs, you'll find a main bedroom, a second bedroom, and a family bathroom.

This property presents an excellent opportunity for first-time buyers, providing a chance to put your own stamp on it and unlock its full potential.

Conveniently located, the home is close to bus services at The Hydneye, where a convenience store is also available. Further shopping facilities, including Tesco, can be found in Brassey Avenue, while Hampden Park railway station provides excellent transport links. Larger supermarkets at Lottbridge Drove and Hampden Park are within walking distance, and the area also benefits from recreational facilities and scenic woodland walks approximately half a mile away.



Knoll Crescent, Eastbourne

