

Upper Horsebridge, Hailsham



- Charming End Terrace Cottage
- Modern Fitted Kitchen
- Period Style Fireplace
- Lounge Dining Room
- Bathroom WC
- Maintenance Free Rear Garden
- Gas Central Heating
- uPVC Double Glazing
- Viewing Highly Advised



Freehold

£250,000

Price guide

2 BEDROOM

1 RECEPTION

1 BATHROOM

GARAGE

Upper Horsebridge, Hailsham

Upper Horsebridge, Hailsham

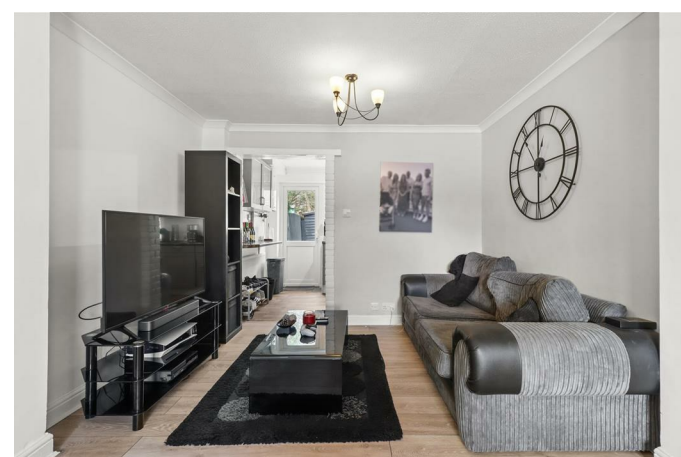
DESCRIPTION

PRICE GUIDE £250,000 - £265,000 | Watch Our On-line 3D Virtual Property Tour | Charming And Very Well Presented Cottage | Bus Route | Closeby Cuckoo Trail Access | Two Bedrooms | Modern Kitchen | Period Style Fireplace | Upstairs Bathroom | Backing Onto Woodland |

Situated within Upper Horsebridge, we are pleased to offer this well presented, two double bedroomed end-terraced Cottage with a pretty, easy to manage courtyard style garden.

Inside it is arranged with an entrance porch leading into the lounge/diner, rear aspect kitchen complete with large pantry cupboard and access into the private rear garden with a gate that leads to a pathway into woodlands beyond. Upstairs there are two double bedrooms and a bathroom. The front of the property has space that is currently used as an unofficial parking single car.

To explore this wonderful property please take a look through our online 3D Virtual Tour before calling us for an accompanied viewing.



Upper Horsebridge, Hailsham

Entrance Lobby 1.40m x 0.97m (4'7 x 3'2)

Lounge Dining Room 5.74m x 4.22m (18'10 x 13'10)

Kitchen 4.22m x 2.21m (13'10 x 7'3)

Walk In Pantry 2.34m x 0.94m (7'8 x 3'1)

First Floor Landing 2.21m x 1.83m (7'3 x 6'0)

Bedroom One 4.42m x 3.43m (14'6 x 11'3)

Bedroom Two 4.42m x 2.21m (14'6 x 7'3)

Bathroom 2.46m x 2.21m (8'1 x 7'3)

Front and Rear Garden