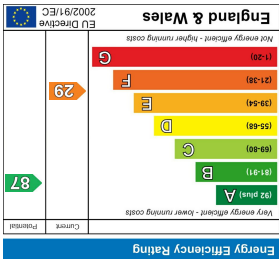
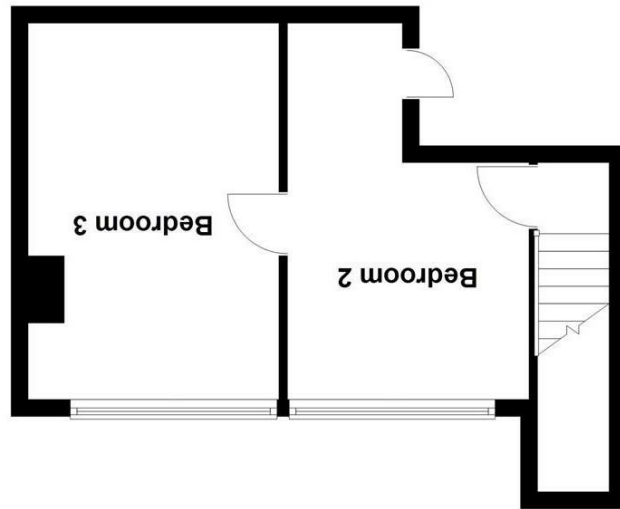
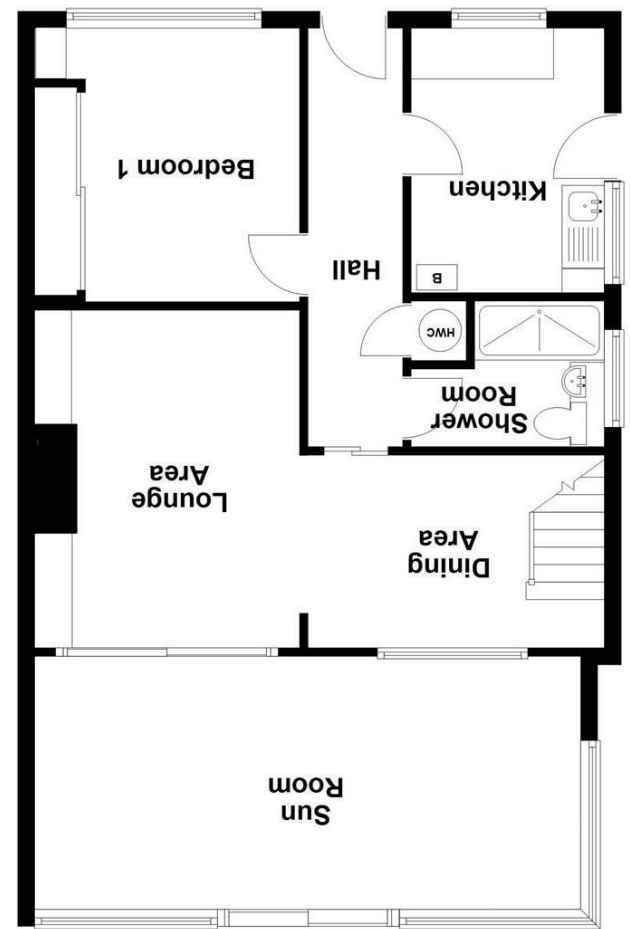




You may download, store and use the material for your own personal use and research. You may not republish, retransmit, redistribute or otherwise make the material available to any party or make the same available on any website, online service or bulletin board of your own or any other party or make the same available in hard copy or in any other media without the website owner's express prior written consent. The website owner's copyright must remain on all reproductions of material taken from this website.

Tel: 01323 483348
www.stevensandcarter.co.uk

48 High Street | Polegate | East Sussex | BN26 6AG



Hastings Close, Polegate



- Semi Detached Chalet
- In Need Of Modernisation
- Large Sun Room
- Kitchen
- G/ F Bedroom & Shwr Rm
- Gas Central Heating
- CASH BUYERS ONLY
- CHAIN FREE
- Large Rear Garden
- EPC=F TAX BAND C



Freehold

£265,000

Guide price



3 BEDROOM



2 RECEPTION



1 BATHROOM



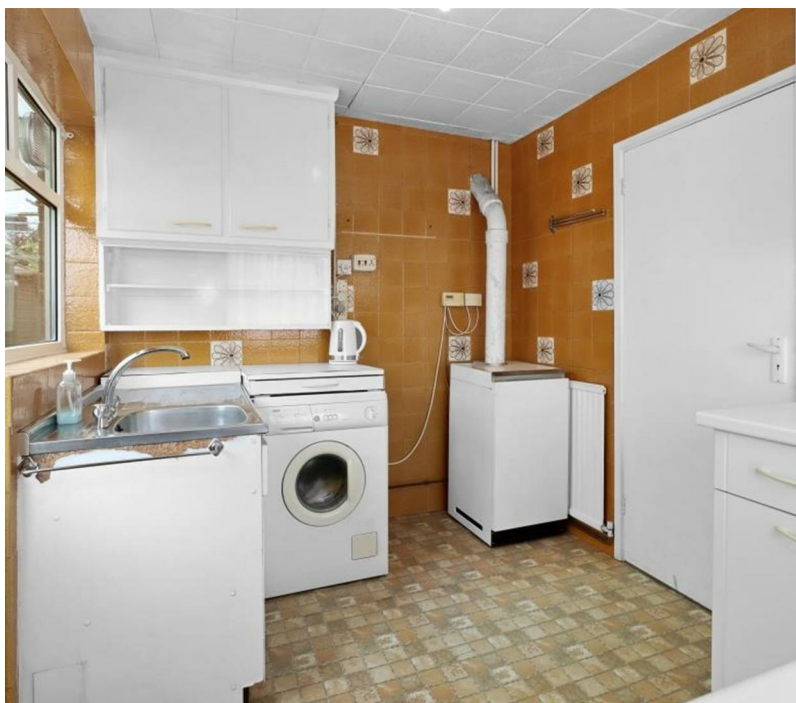
GARAGE

Hastings Close, Polegate

Hastings Close, Polegate

DESCRIPTION

CASH BUYERS ONLY A 3-BEDROOMED SEMI DETACHED CHALET STYLE BUNGALOW WHICH HAS REMAINED WITHIN THE SAME FAMILY SINCE BUILT IN THE 1960s. The property does require modernisation and the accommodation provides an L-shaped lounge/dining room, a large sun room, kitchen, ground floor bedroom and shower room/wc, and we are informed the original loft was converted into two interlinking bedrooms around 1970. There is also a gas fired central heating system, double glazing and outside is off road parking to the front, a good size garage, and a mature 55' westerly rear garden. Polegate High Street is approximately 3/4 of a mile and has various shops, medical centres and a mainline railway station. Bus services pass along Pevensey Road, where there is also a local convenience store. From the end of nearby Levett Road, is access to The Cuckoo Trail providing many countryside walks and cycling routes. NO ONGOING CHAIN. This property is on a guide price of £265,000 - £285,000.



Hastings Close, Polegate

Entrance

Part frosted double glazed panelled front door leading to the hallway.

Hallway

Electric meter cupboard, telephone point, radiator, digital thermostat, built-in airing cupboard housing the hot water cylinder.

Kitchen 3.18m x 2.29m (10'5 x 7'6)

Consisting of base units with cupboards and drawers, worktops, sink unit with mixer tap and cupboard under, plumbing for washing machine, electric cooker point, various wall units, floor standing Potterton gas fired boiler, wall programmer for central heating & hot water, radiator, tiled walls, double glazed window to front, part frosted double glazed door with adjacent double glazed window to side.

Bedroom One 3.23m x 2.54m (10'7 x 8'4)

Having fitted wardrobes with sliding doors, adjacent fitted unit, television point, telephone point, radiator, double glazed window to front.

Shower Room

Consisting of a good size shower cubicle with wall shower controls and attachment, sliding shower screen doors, vanity unit with wash hand basin having mixer tap and cupboard under, wc, wall cupboard, radiator, tiled walls, Dimplex fan heater, frosted double glazed window.

Dining Room 3.56m x 2.29m (11'8 x 7'6)

With double glazed window into sun room, stairs to first floor and opens through to lounge area. Stairs from the Dining Area to the First Floor.

Lounge 3.99m x 2.72m (13'1 x 8'11)

Having a fitted gas fire with surround display, fitted units into both recesses with fitted shelving above, radiator, double glazed sliding door to Sun Room.

Sun Room 6.63m x 3.00m (21'9 x 9'10)

Having double glazed windows, power & light, tiled floor and double glazed sliding door to the rear garden.

Bedroom Two 4.27m x 2.87m (14'0 x 9'5)

L-shaped in design with some sloping ceilings, television point, radiator, double glazed window to rear with eaves storage under, door to boarded loft/eaves with light, further door to Bedroom 3

Bedroom Three 4.47m x 2.87m (14'8 x 9'5)

Having sloping ceilings, double glazed window to rear with eaves storage under, television point, radiator.

Outside

The front is brick paved providing Off Road Parking, well stocked flower borders having a variety of established plants and small trees.

Rear Garden

The rear garden enjoys a westerly aspect and please note there are two support frames of the electricity pylon placed within the garden, paved and lawn areas, many mature trees and established plants, small pond, partly covered side entrance with outside tap and gate.

Garage 7.26m x 2.90m (23'10 x 9'6)

(these are approximate internal measurements) two side doors, power & light, up-and-over door.