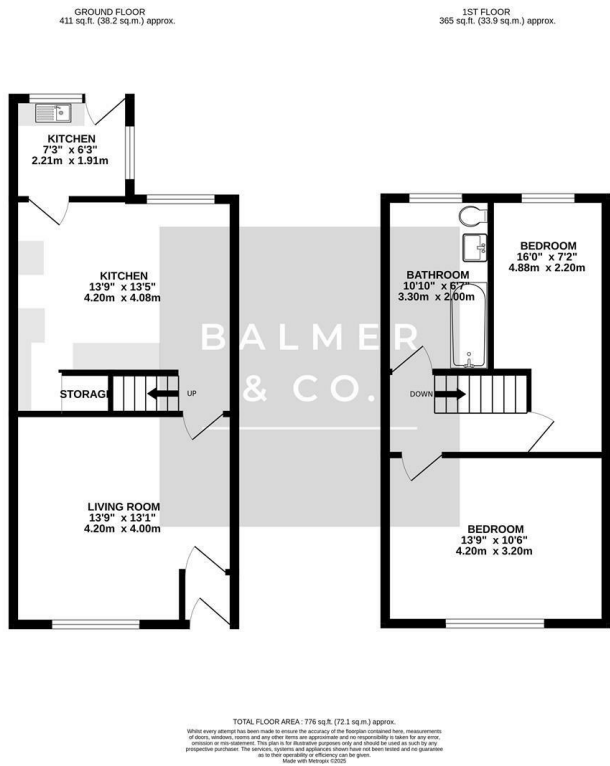


Hope Street, Leigh, WN7 1NP
Offers Over £140,000

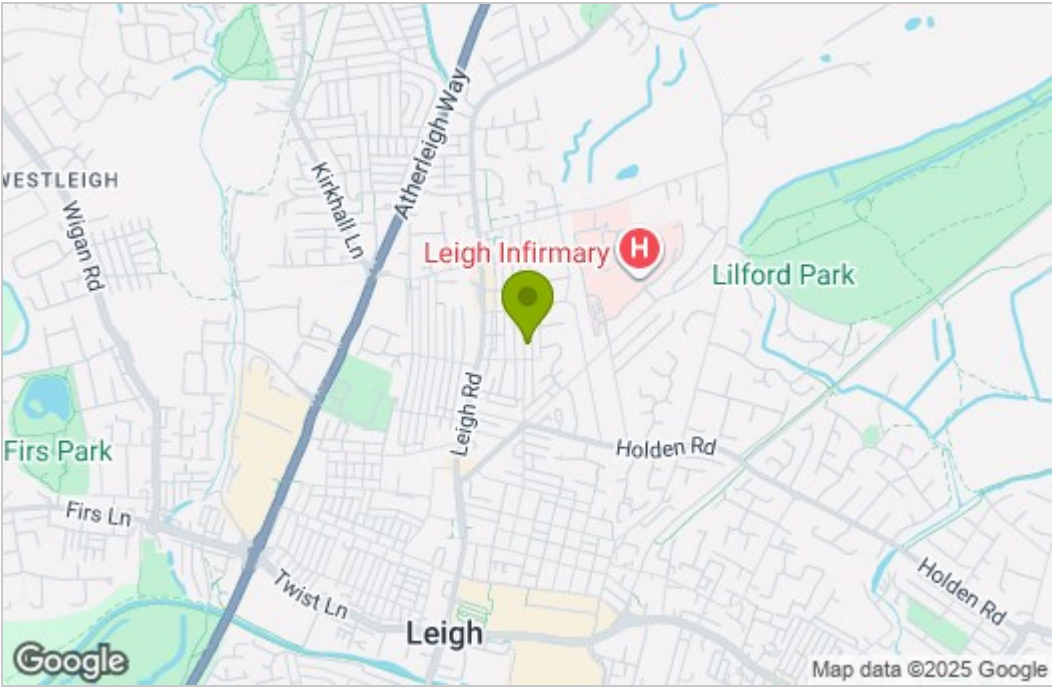


BALMER & CO in LEIGH are delighted to offer FOR SALE this fantastic two bedroom mid-terrace house in Leigh. Offered with NO ONWARD CHAIN this property has been recently renovated and is very nicely presented throughout. Comprising in brief of entrance vestibule, large living room, modern fitted kitchen/dining room, with a utility room to the rear completing the ground floor. To the first floor is a large master bedroom, second large single bedroom, with a modern fitted three piece family bathroom completing the accommodation on offer. Externally the property is garden fronted, whilst to the rear is a low maintenance, fully enclosed yard. Early viewing highly recommended, all enquiries welcome.

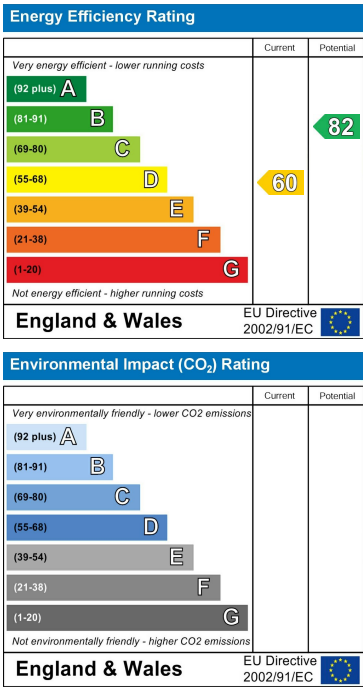
Floor Plan



Area Map



Energy Efficiency Graph



These particulars, whilst believed to be accurate are set out as a general outline only for guidance and do not constitute any part of an offer or contract. Intending purchasers should not rely on them as statements of representation of fact, but must satisfy themselves by inspection or otherwise as to their accuracy. No person in this firm's employment has the authority to make or give any representation or warranty in respect of the property.