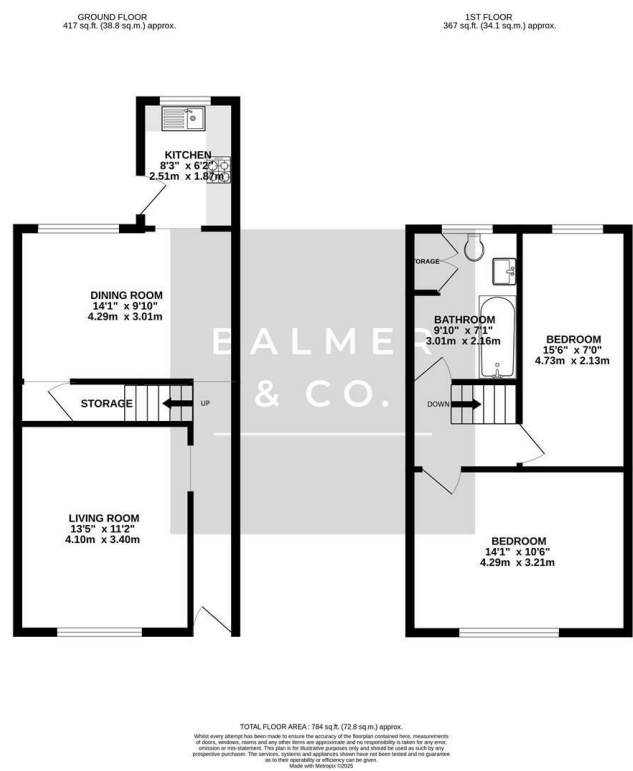


Buchanan Street, Leigh, WN7 1XT  
Offers Over £110,000



BALMER & CO in LEIGH are delighted to offer FOR SALE this fantastic two bedroom mid-terrace house situated close to Leigh town centre. Offered with NO ONWARD CHAIN this property does require light refurbishment but does offer ample potential. Comprising in brief of entrance hallway, large living room, dining room, with a fitted kitchen to the rear completing the ground floor. To the first floor is a large master bedroom, second long single bedroom, with a three piece bathroom completing the accommodation on offer. Externally the property is pavement fronted whilst to the rear there is a low maintenance, fully enclosed yard. Early viewings highly recommended, all enquiries welcome.

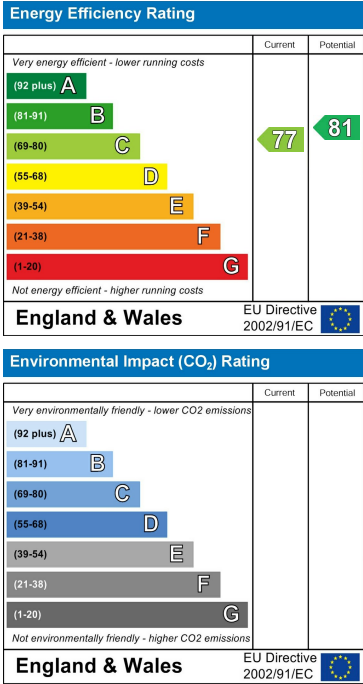
Floor Plan



Area Map



Energy Efficiency Graph



These particulars, whilst believed to be accurate are set out as a general outline only for guidance and do not constitute any part of an offer or contract. Intending purchasers should not rely on them as statements of representation of fact, but must satisfy themselves by inspection or otherwise as to their accuracy. No person in this firms employment has the authority to make or give any representation or warranty in respect of the property.