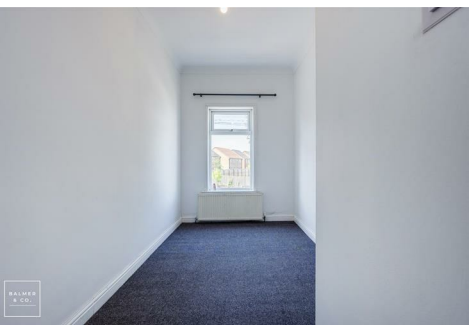
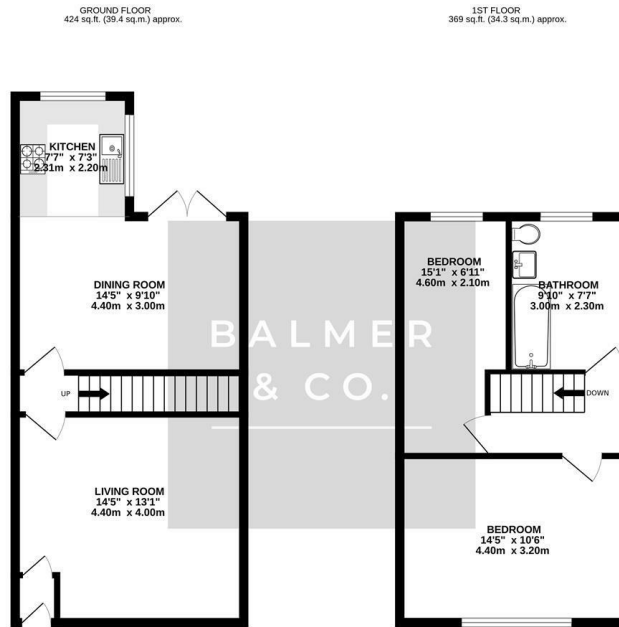


Glebe Street, Leigh, WN7 1RH
£115,000



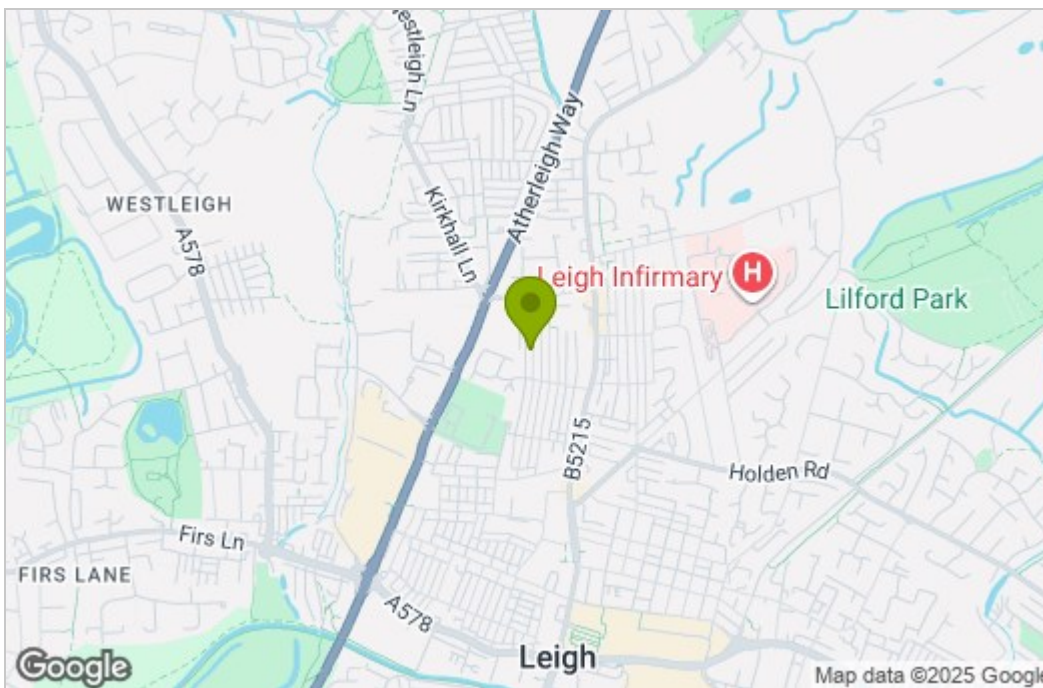
BALMER & CO in LEIGH are delighted to offer FOR SALE this fantastic two bedroom mid-terrace house close to Leigh town centre. Offered with no onward chain, this property comprises in brief of entrance vestibule, large living room, dining room, with a fitted kitchen to the rear completing the ground floor. To the first floor is a large master bedroom, large second single bedroom, with a three piece family bathroom completing the accommodation on offer. Externally the property is pavement fronted, whilst to the rear is a fully enclosed, low maintenance yard. Early viewings highly recommended, all enquiries welcome.

Floor Plan

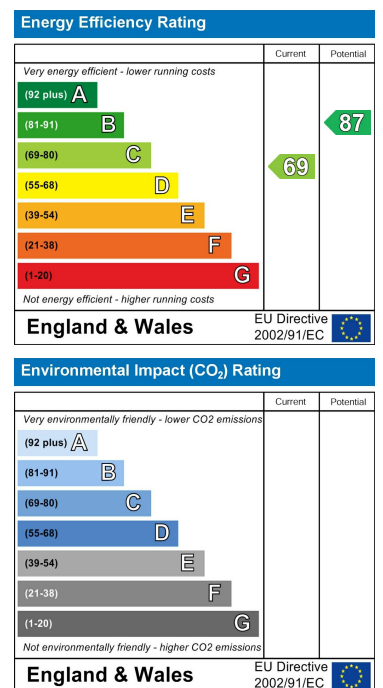


TOTAL FLOOR AREA: 793 sq. ft. (73.7 sq. m.) approx.
Whilst every attempt has been made to ensure the accuracy of the floorplan contained here, measurements of plots, windows, doors and any other items are approximate and no responsibility is taken for any error, omission or misstatement. This plan is for illustrative purposes only and should be used as such by any prospective purchaser. The services, systems and appliances shown are not guaranteed and the purchaser will be responsible for efficiency and the like.
 Made with Metaphys' CCDS

Area Map



Energy Efficiency Graph



These particulars, whilst believed to be accurate are set out as a general outline only for guidance and do not constitute any part of an offer or contract. Intending purchasers should not rely on them as statements of representation of fact, but must satisfy themselves by inspection or otherwise as to their accuracy. No person in this firm's employment has the authority to make or give any representation or warranty in respect of the property.