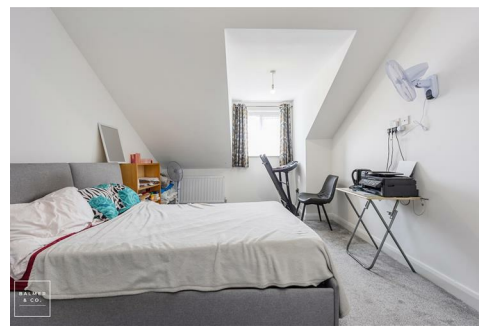
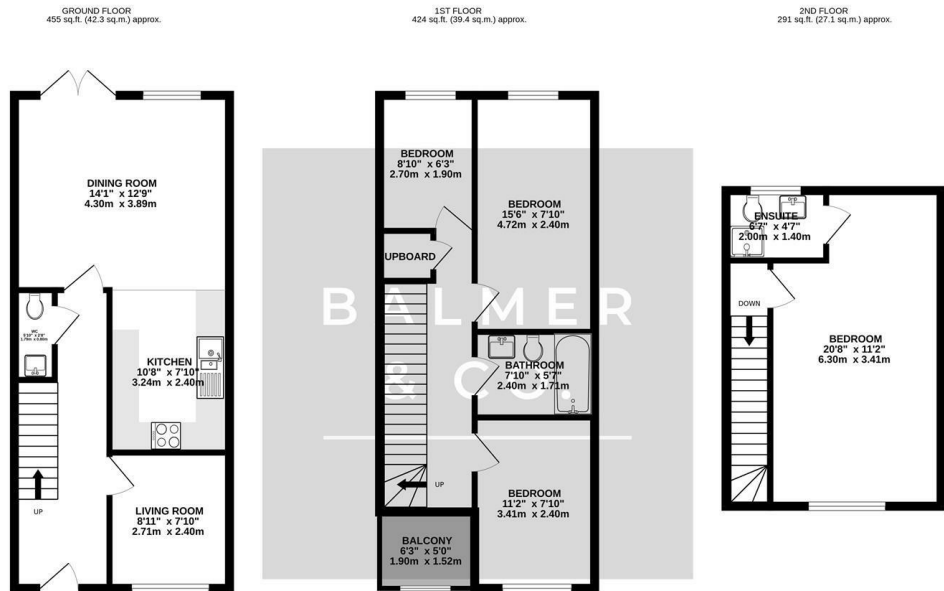


Bramblemead, Leigh, WN7 5GH
£225,000



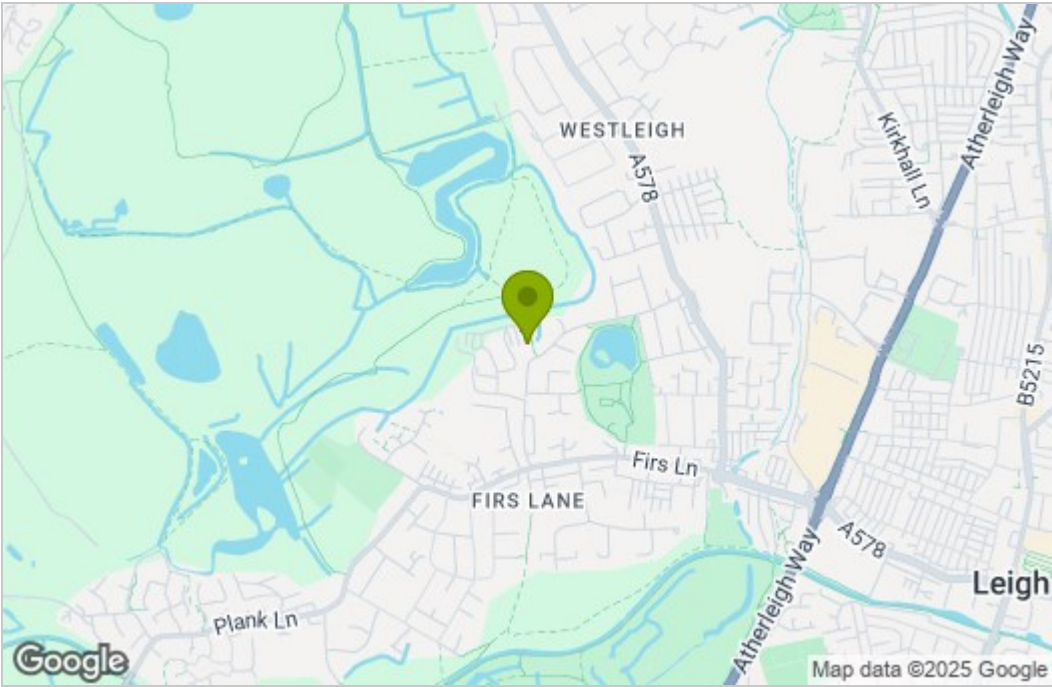
BALMER & CO in LEIGH are delighted to offer FOR SALE this fantastic four bedroom townhouse in Leigh. Very nicely presented throughout, this modern property briefly comprises of entrance hallway, large open plan kitchen/dining room with modern integrated appliances and French doors leading to the rear garden, sitting room, with W.C, completing the ground floor. To the first floor are two well proportioned double bedrooms, third single bedroom, with a three piece family bathroom. To the the second floor is a large master bedroom with ensuite shower room completing the accommodation on offer. Externally the property is garden fronted whilst to the rear there is a fully enclosed, private garden. Early viewing highly recommended, all enquiries welcome.

Floor Plan

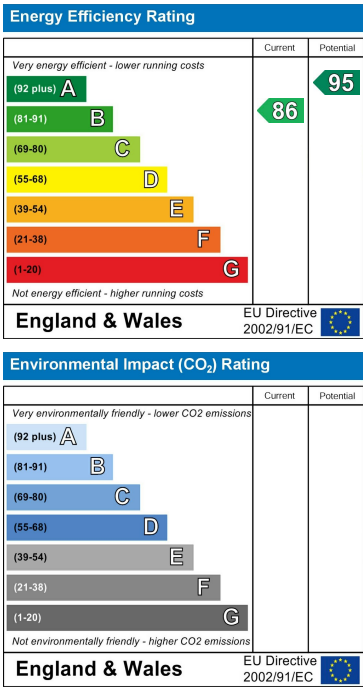


TOTAL FLOOR AREA : 1170 sq.ft. (108.7 sq.m.) approx.
Whilst every attempt has been made to ensure the accuracy of the floorplan contained here, measurements of doors, windows, rooms and any other items are approximate and no responsibility is taken for any error, omission or mis-statement. This plan is for illustrative purposes only and should be used as such by any prospective purchaser. The services, systems and appliances shown have not been tested and no guarantee as to their operability or efficiency can be given.
Made with Metropix ©2025

Area Map



Energy Efficiency Graph



These particulars, whilst believed to be accurate are set out as a general outline only for guidance and do not constitute any part of an offer or contract. Intending purchasers should not rely on them as statements of representation of fact, but must satisfy themselves by inspection or otherwise as to their accuracy. No person in this firms employment has the authority to make or give any representation or warranty in respect of the property.