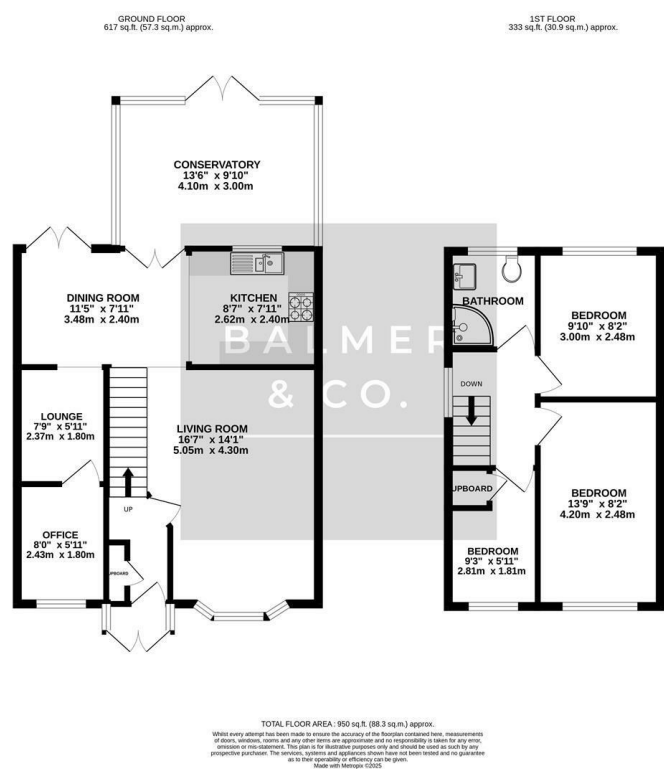


Telford Crescent, Leigh, WN7 5LZ
£210,000

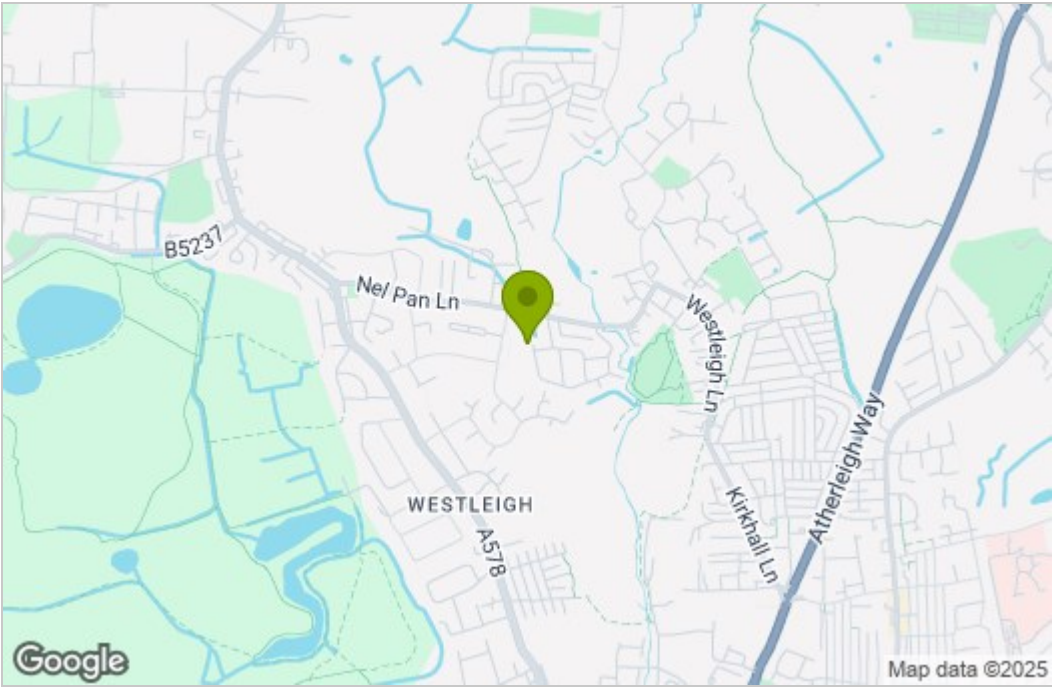


BALMER & CO in LEIGH are delighted to offer FOR SALE this fantastic three bedroom semi detached property located on Telford Crescent. Well presented throughout offering excellent family living space and ideally offered with no onward chain, it would suit a wide range of buyers. The ground floor comprising in brief; entrance porch, hallway, large living room, fitted kitchen/dining room with French doors leading to the rear garden. A garage conversion with two rooms and a conservatory complete the ground floor. To the first floor are two double bedrooms, a third single bedroom and a three piece shower room. Externally there is off road parking to the front whilst to the rear there is a low maintenance, fully enclosed garden. Early viewings highly recommended, all enquiries welcome.

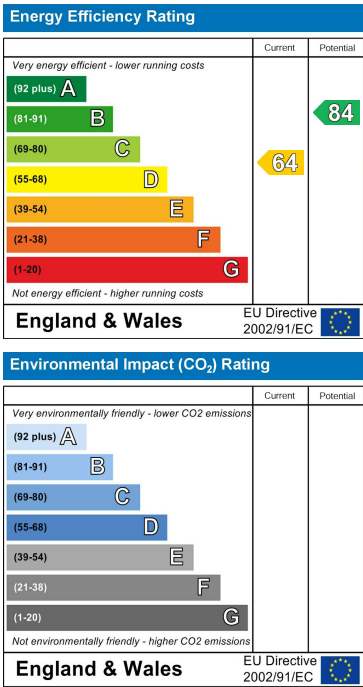
Floor Plan



Area Map



Energy Efficiency Graph



These particulars, whilst believed to be accurate are set out as a general outline only for guidance and do not constitute any part of an offer or contract. Intending purchasers should not rely on them as statements of representation of fact, but must satisfy themselves by inspection or otherwise as to their accuracy. No person in this firms employment has the authority to make or give any representation or warranty in respect of the property.