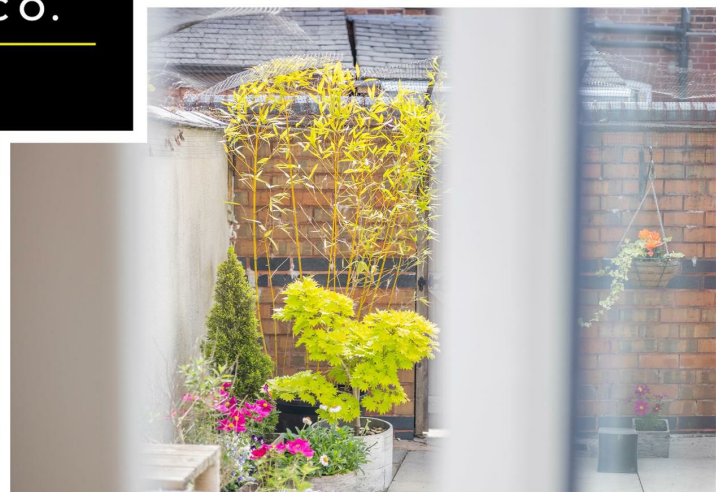


Mill Lane, Leigh, WN7 2BU  
Offers Over £130,000

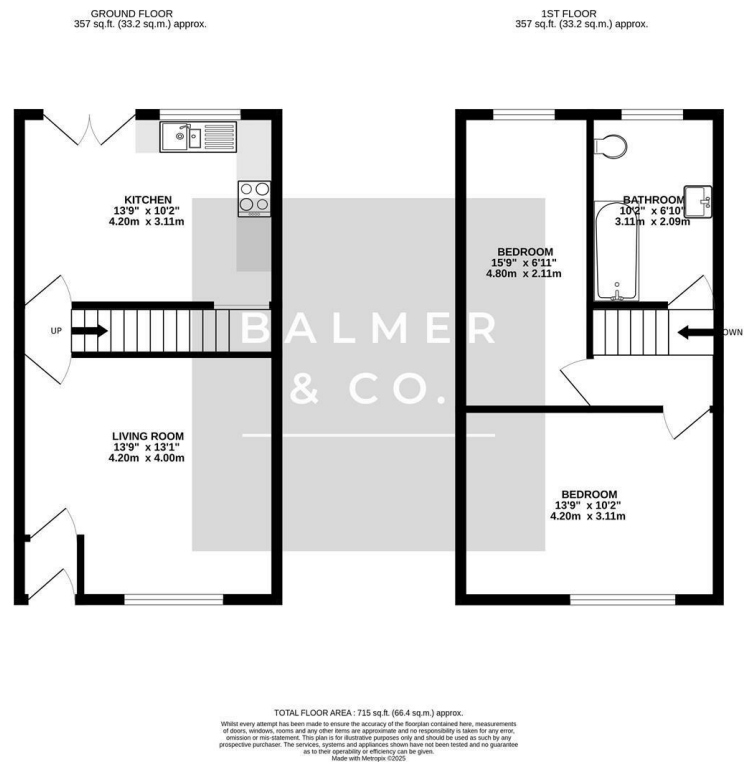


BALMER  
& CO.

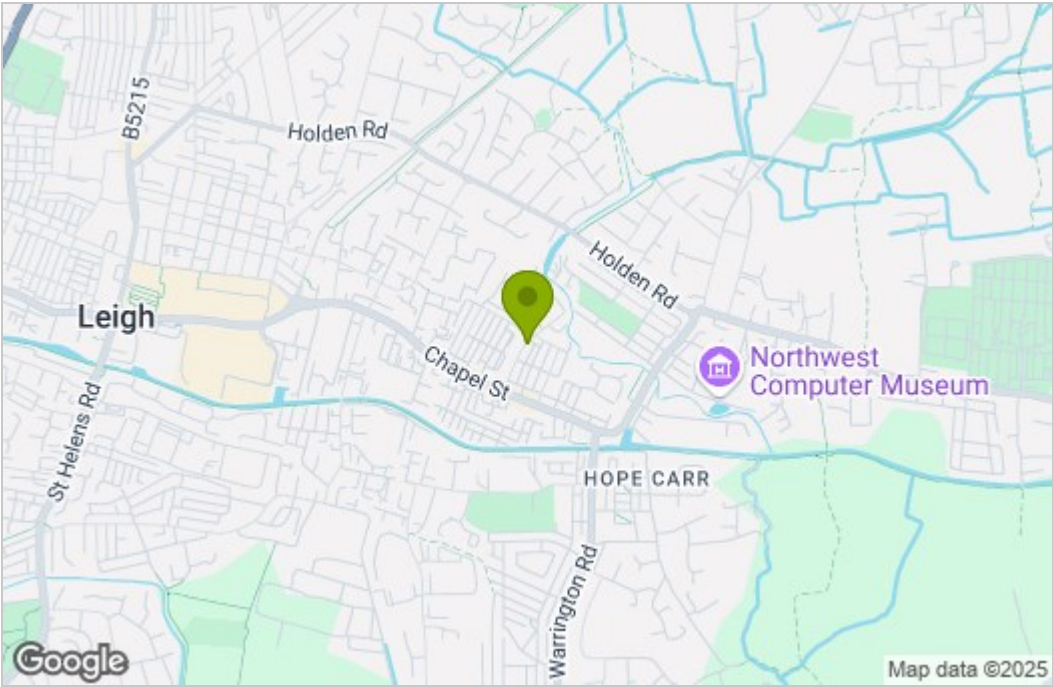


BALMER & CO in LEIGH are delighted to offer FOR SALE this fantastic two bedroom mid-terrace house situated in the Bedford area of Leigh. Very nicely presented throughout this property comprises in brief of entrance vestibule, large living room, with a modern fitted kitchen/dining room with integrated appliances and French doors leading to the rear yard completing the ground floor. To the first floor is a large master bedroom, second double bedroom, with a three piece family bathroom completing the accommodation on offer. Externally the property is pavement fronted whilst to the rear there is a fully enclosed, low maintenance yard. Early viewings highly recommended, all enquiries welcome.

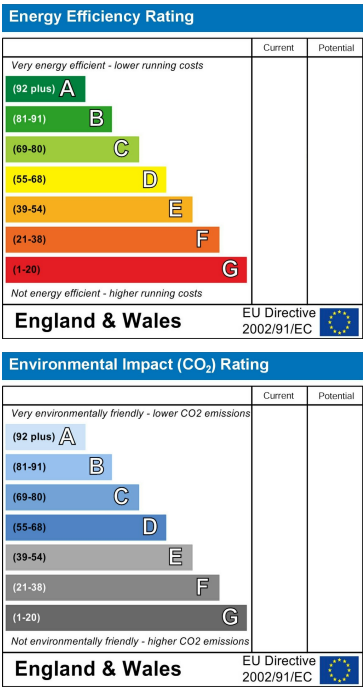
Floor Plan



Area Map



Energy Efficiency Graph



These particulars, whilst believed to be accurate are set out as a general outline only for guidance and do not constitute any part of an offer or contract. Intending purchasers should not rely on them as statements of representation of fact, but must satisfy themselves by inspection or otherwise as to their accuracy. No person in this firms employment has the authority to make or give any representation or warranty in respect of the property.