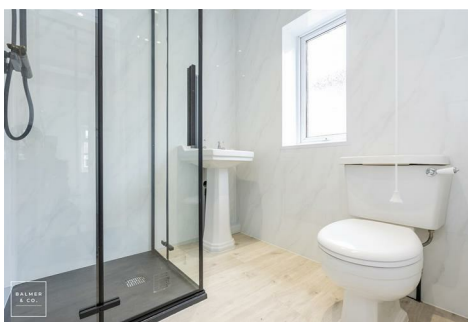
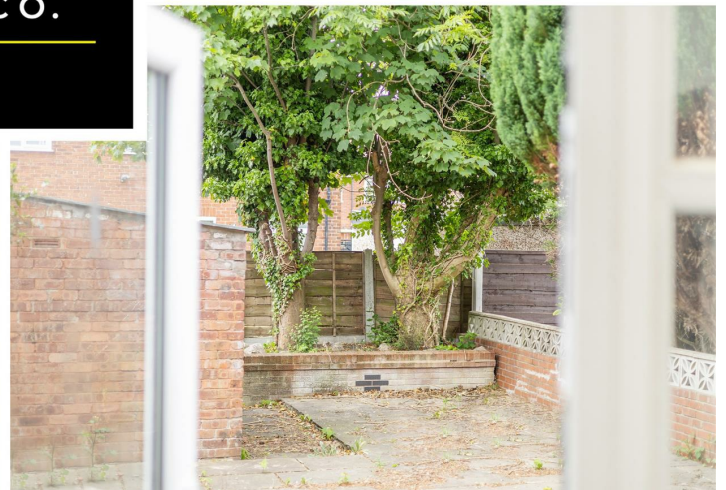
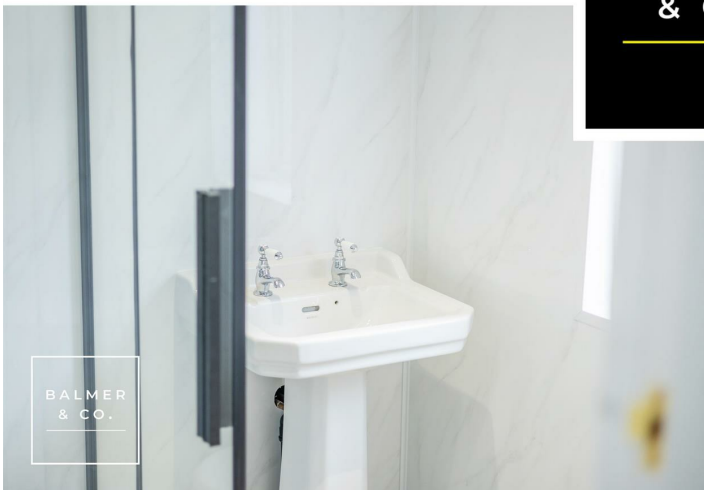


Charles Street, Leigh, WN7 1PP  
£229,950

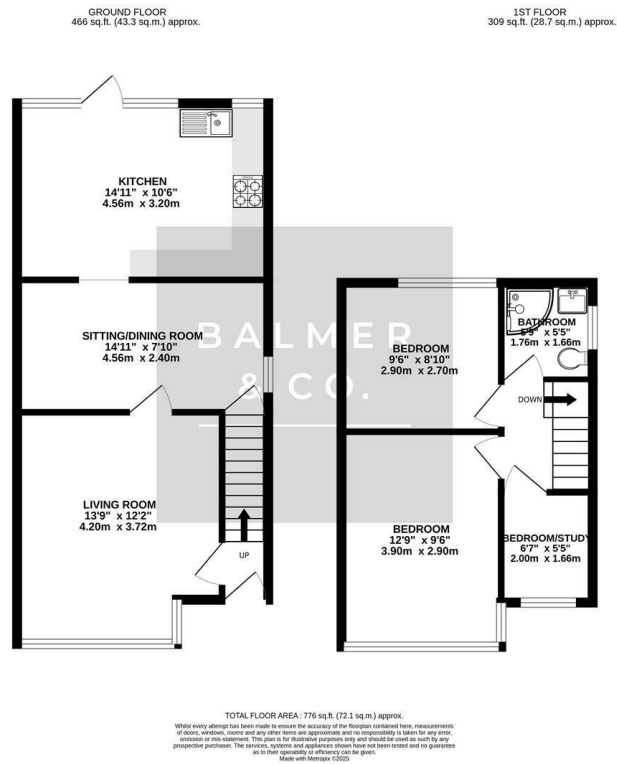


BALMER  
& CO.

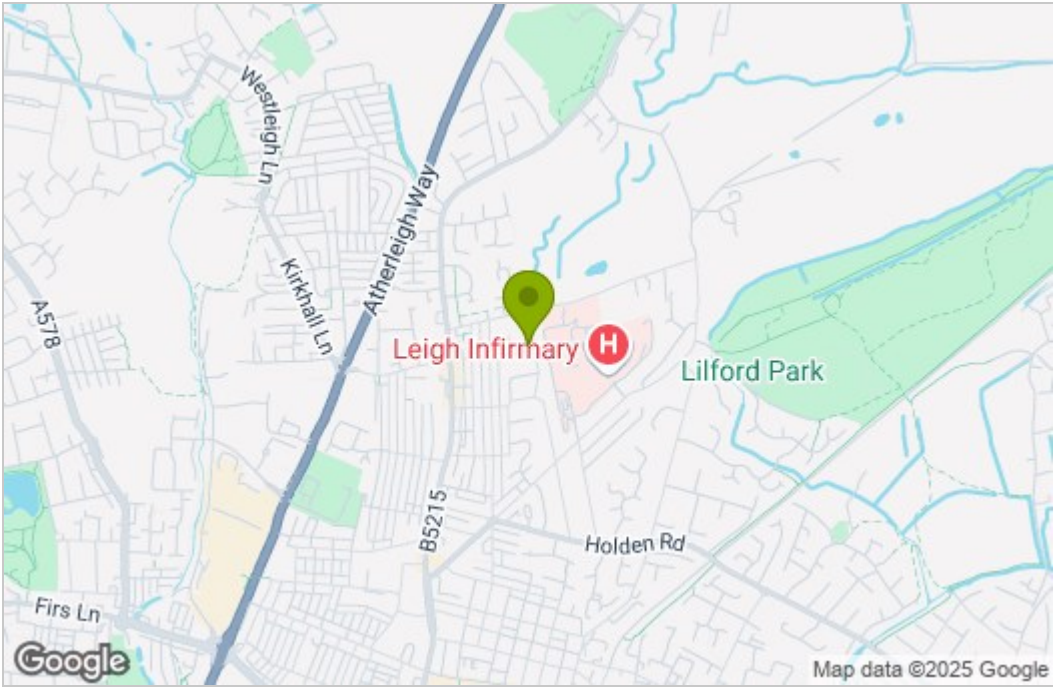


BALMER & CO in LEIGH are delighted to offer FOR SALE this fantastic three bedroom semi-detached house in Leigh. Recently renovated and offered with no onward chain, this property has been extended to the rear and offers excellent family living space. Comprising in brief of entrance hallway, large bay fronted living room, separate sitting room, with a modern fitted kitchen/dining room with integrated appliances completing the ground floor. To the first floor is a large master bedroom, second double bedroom, third single bedroom, with a three piece shower room completing the accommodation on offer. Externally there is a large driveway to the front offering ample off-road parking, whilst to the rear there is a large, low maintenance, West facing garden. Early viewings highly recommended, all enquiries welcome.

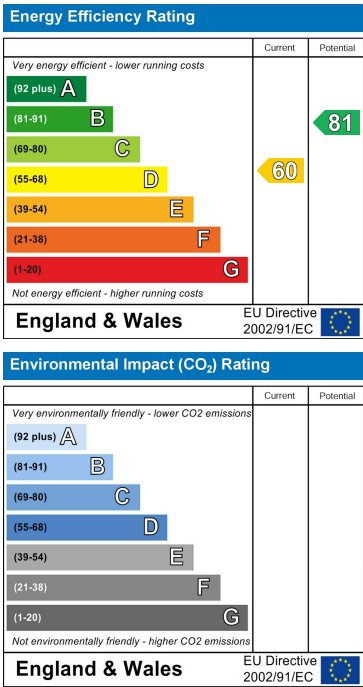
Floor Plan



Area Map



Energy Efficiency Graph



These particulars, whilst believed to be accurate are set out as a general outline only for guidance and do not constitute any part of an offer or contract. Intending purchasers should not rely on them as statements of representation of fact, but must satisfy themselves by inspection or otherwise as to their accuracy. No person in this firms employment has the authority to make or give any representation or warranty in respect of the property.