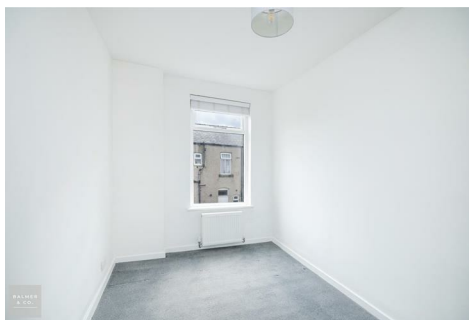
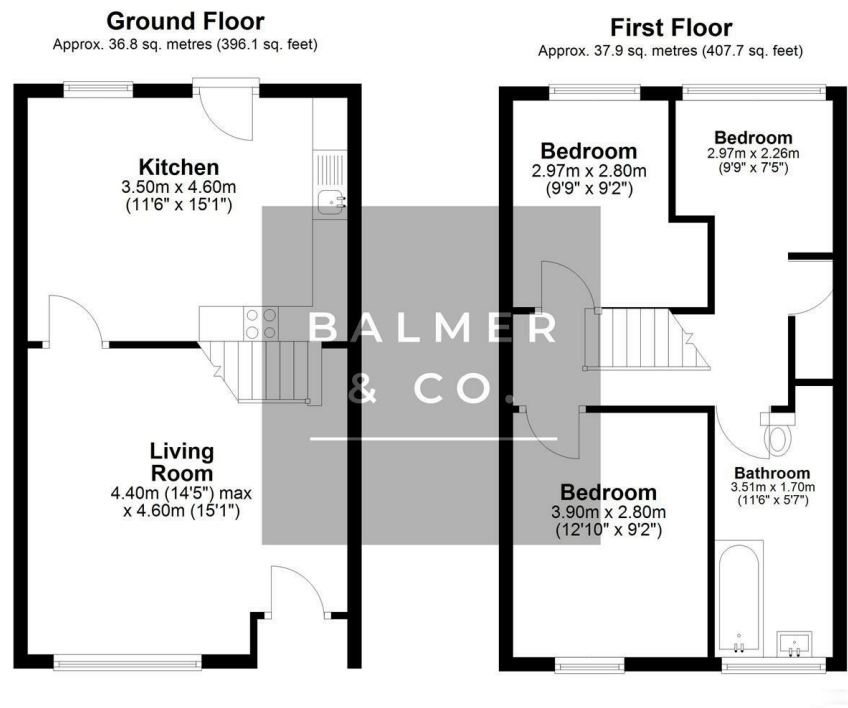


Walter Street, Leigh, WN7 4TY
Offers Over £130,000

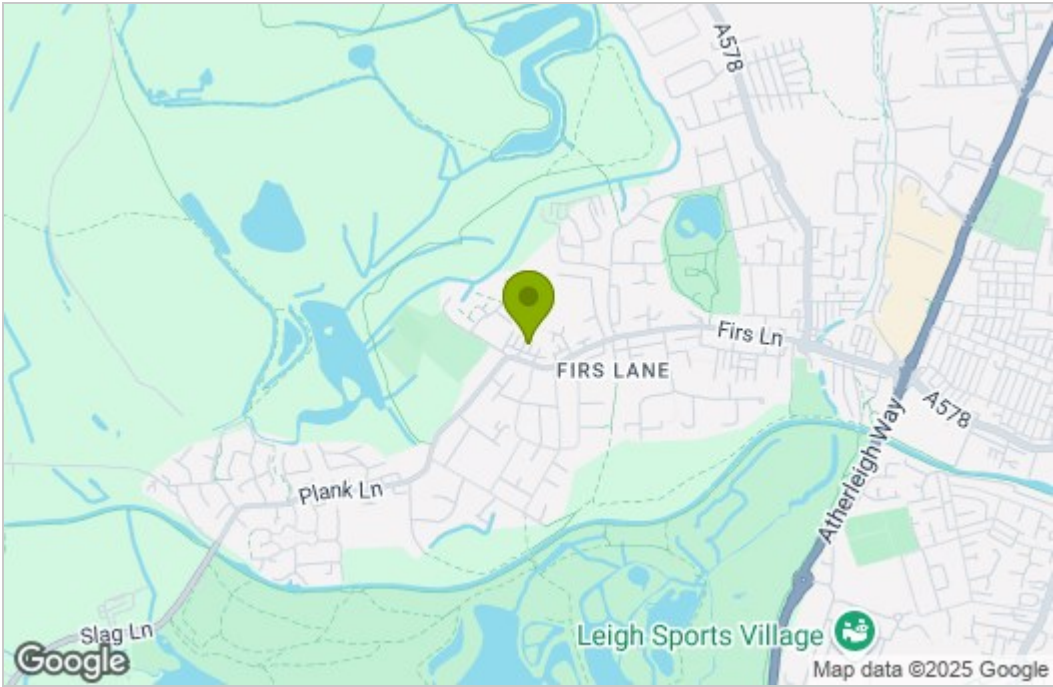


BALMER & CO in LEIGH are delighted to offer FOR SALE this fantastic three bedroom mid-terrace house situated close to the popular Pennington Waterside & Marina development. Offered with no onward chain and very nicely presented throughout, this property comprises in brief of large living room, with a modern fitted kitchen/dining room with integrated appliances completing the ground floor. To the first floor are two well proportioned double bedrooms, third single bedroom, with a three piece family bathroom completing the accommodation on offer. Externally the property is garden fronted, whilst to the rear there is a fully enclosed, low maintenance courtyard. Early viewings highly recommended, all enquiries welcome.

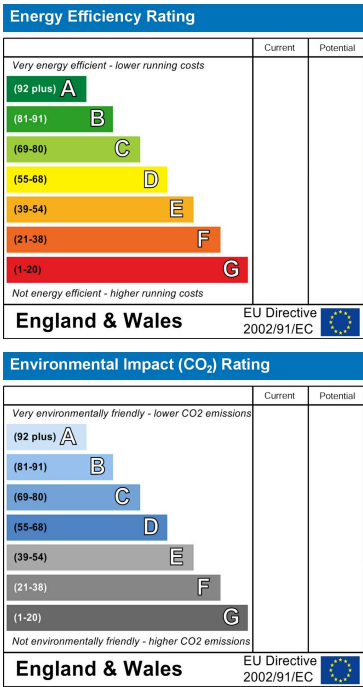
Floor Plan



Area Map



Energy Efficiency Graph



These particulars, whilst believed to be accurate are set out as a general outline only for guidance and do not constitute any part of an offer or contract. Intending purchasers should not rely on them as statements of representation of fact, but must satisfy themselves by inspection or otherwise as to their accuracy. No person in this firms employment has the authority to make or give any representation or warranty in respect of the property.