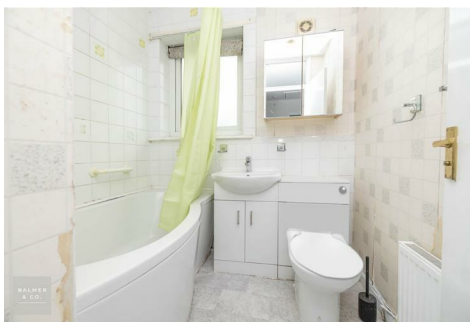
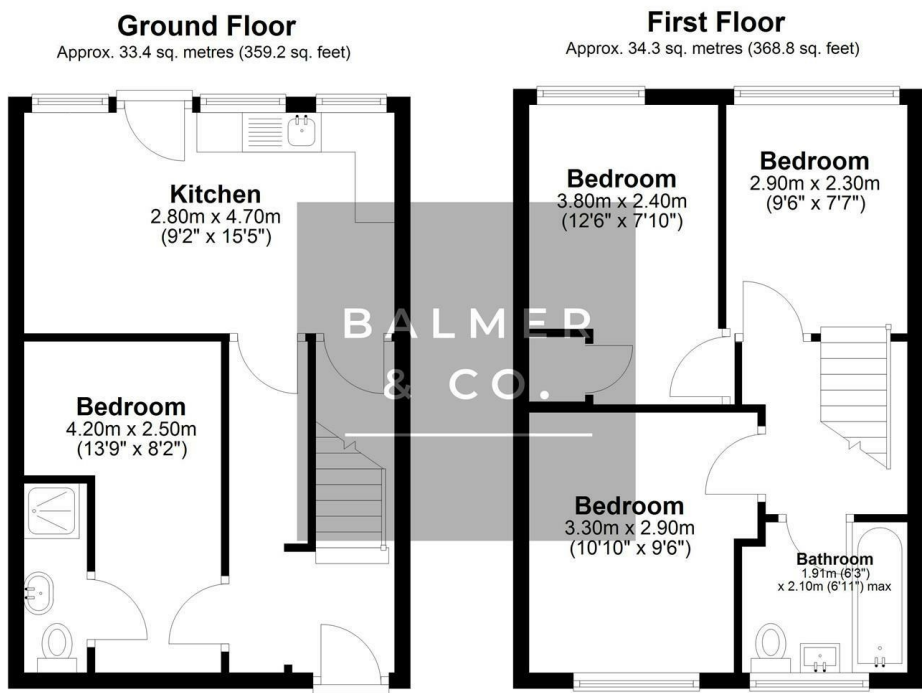


Whalley Grove, Leigh, WN7 5PJ
£130,000



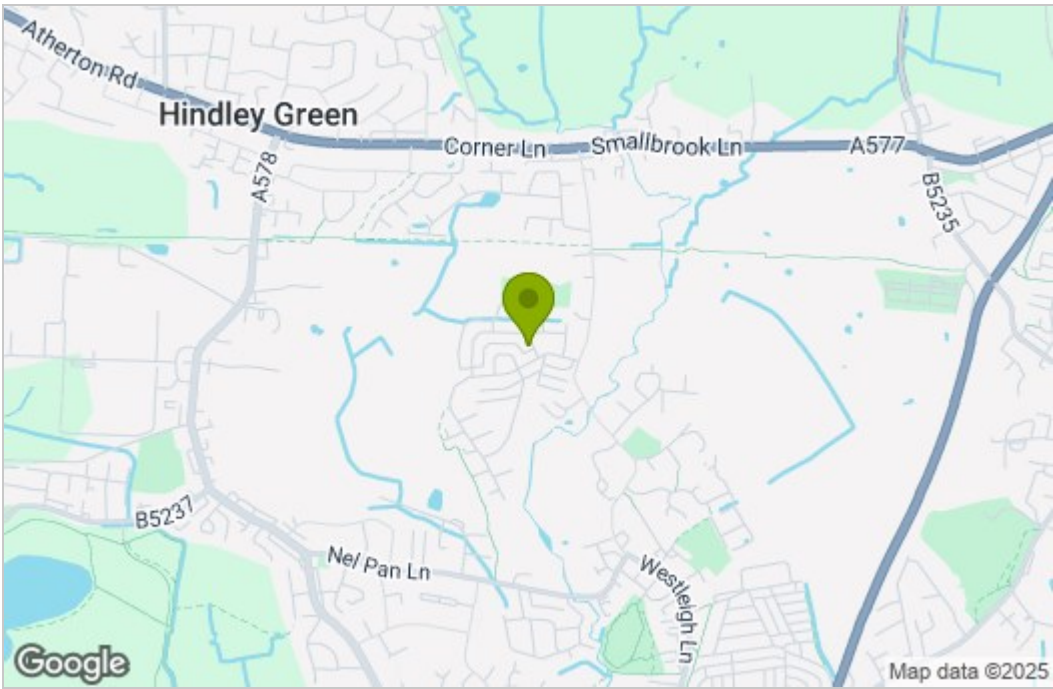
BALMER & CO in LEIGH are delighted to offer FOR SALE this three bedroom mid terraced property located on Whalley Grove in Leigh. Offering spacious accommodation with off road parking and the bonus of now onward chain it would make an ideal first time buy or investment opportunity. The ground floor comprising in brief; entrance hallway, living room/bedroom with en-suite and a fitted kitchen with breakfast bar. To the first floor are three bedrooms and three piece bathroom suite completing the internal accommodation. Externally, there is off road parking to the front of the property with a low maintenance garden complete with detached garage to the rear. Early viewings highly recommended, all enquiries welcome.

Floor Plan

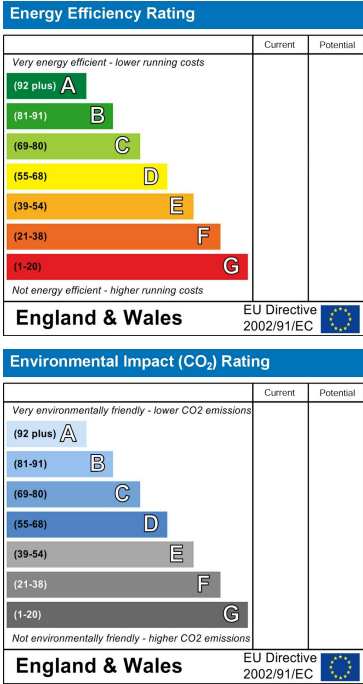


Total area: approx. 67.6 sq. metres (728.0 sq. feet)

Area Map



Energy Efficiency Graph



These particulars, whilst believed to be accurate are set out as a general outline only for guidance and do not constitute any part of an offer or contract. Intending purchasers should not rely on them as statements of representation of fact, but must satisfy themselves by inspection or otherwise as to their accuracy. No person in this firms employment has the authority to make or give any representation or warranty in respect of the property.