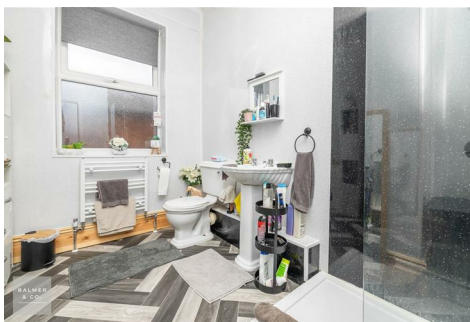


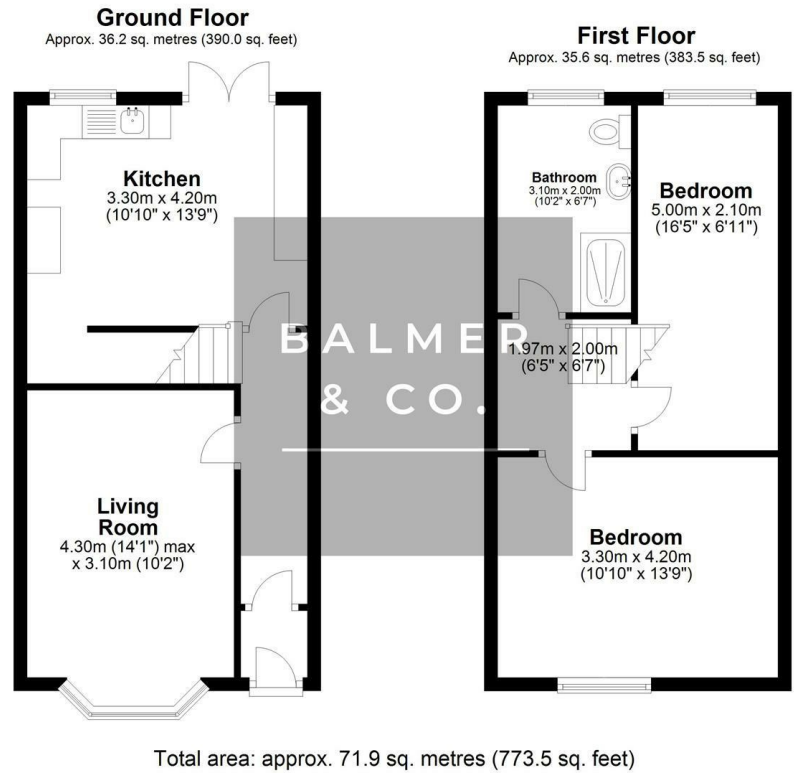
Walmesley Road, Leigh, WN7 1XR  
Offers Over £145,000



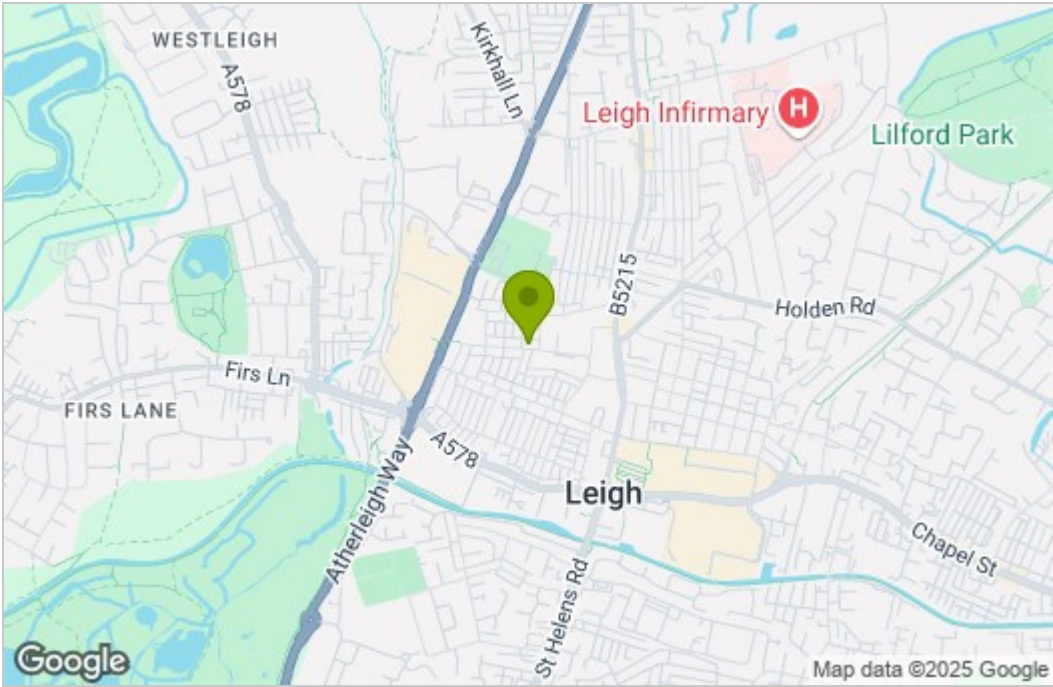


BALMER & CO in LEIGH are delighted to offer FOR SALE this fantastic two bedroom mid-terrace house close to Leigh town centre. Offered with no onward chain this property has been very well maintained and would make an ideal first time buy or investment. Comprising in brief of entrance hallway, bay fronted living room with feature fireplace and surround, with kitchen/dining room completing the ground floor. To the first floor is a large master bedroom, second long double bedroom, with a three piece shower room completing the accommodation on offer. Externally the property is garden fronted, whilst to the rear there is a low maintenance courtyard with a brick built shed. Early viewings highly recommended, all enquiries welcome.

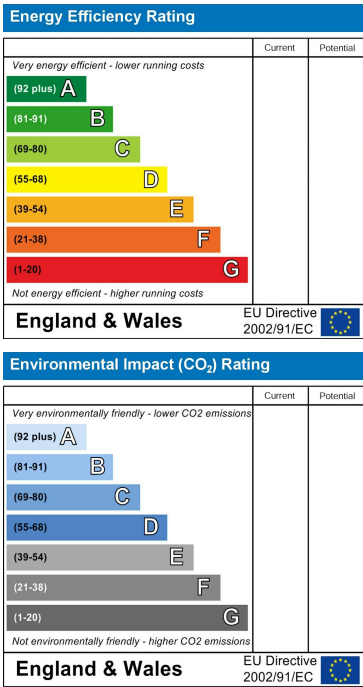
Floor Plan



Area Map



Energy Efficiency Graph



These particulars, whilst believed to be accurate are set out as a general outline only for guidance and do not constitute any part of an offer or contract. Intending purchasers should not rely on them as statements of representation of fact, but must satisfy themselves by inspection or otherwise as to their accuracy. No person in this firms employment has the authority to make or give any representation or warranty in respect of the property.