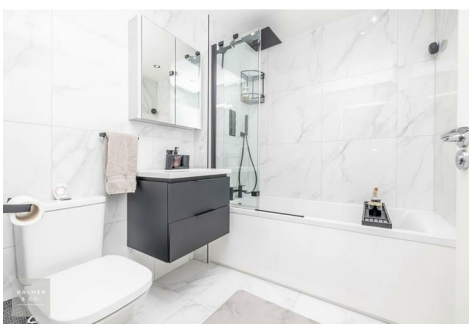
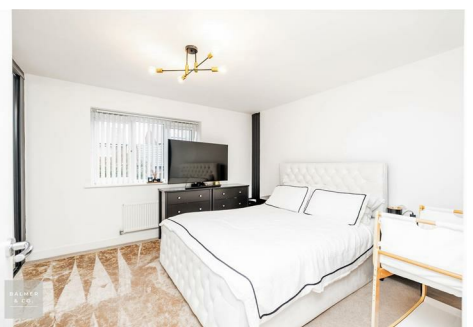


Riley Bank Road, Leigh, WN7 4GD
Offers Over £260,000



BALMER & Co in LEIGH are delighted to offer FOR SALE this fantastic three bedroom, three storey townhouse situated on the ever popular Pennington Wharf development in Leigh. Immaculately presented throughout, this excellent family home simply must be viewed. Comprising in brief of entrance hallway, large open plan kitchen/dining room with modern integrated appliances, living room to the rear with French doors leading to the rear garden, with W.C, completing the ground floor. To the first floor is a large double bedroom with fitted cupboard space, second large single bedroom, with three piece family bathroom completing the first floor. To the second floor is a large master suite with ensuite shower room completing the accommodation on offer. Outside the property has a double driveway to the front, whilst to the rear there is a South-East facing rear garden with lawn and patio areas, with side access to the front. Early viewings highly recommended, all enquiries welcome.

Floor Plan

