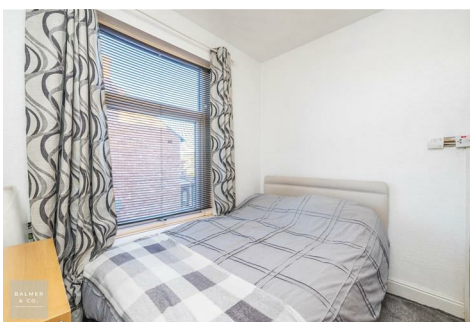
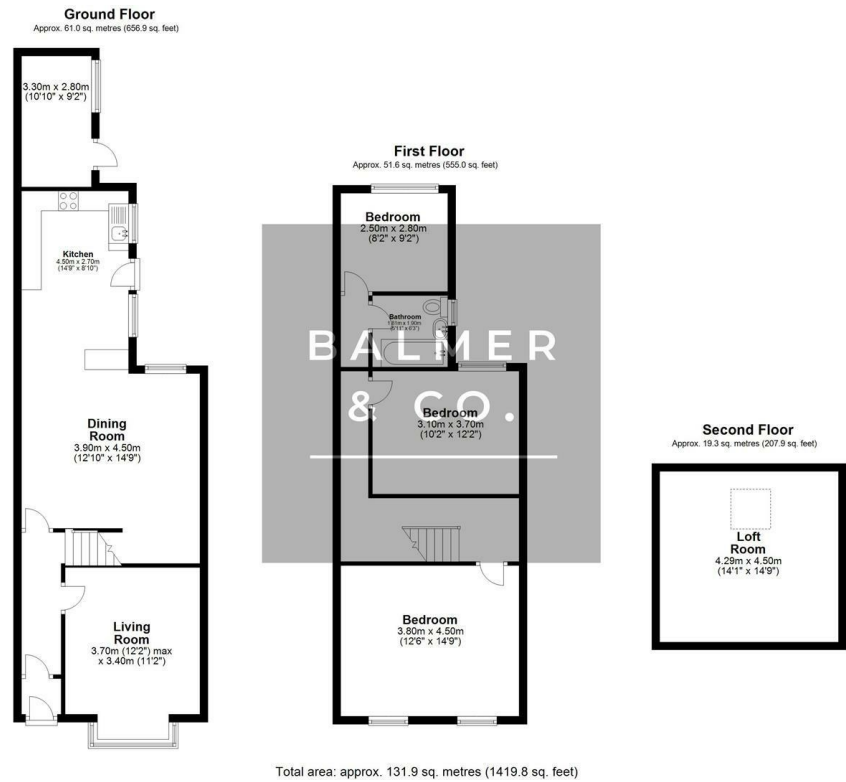


Holden Road, Leigh, WN7 1EX
£180,000

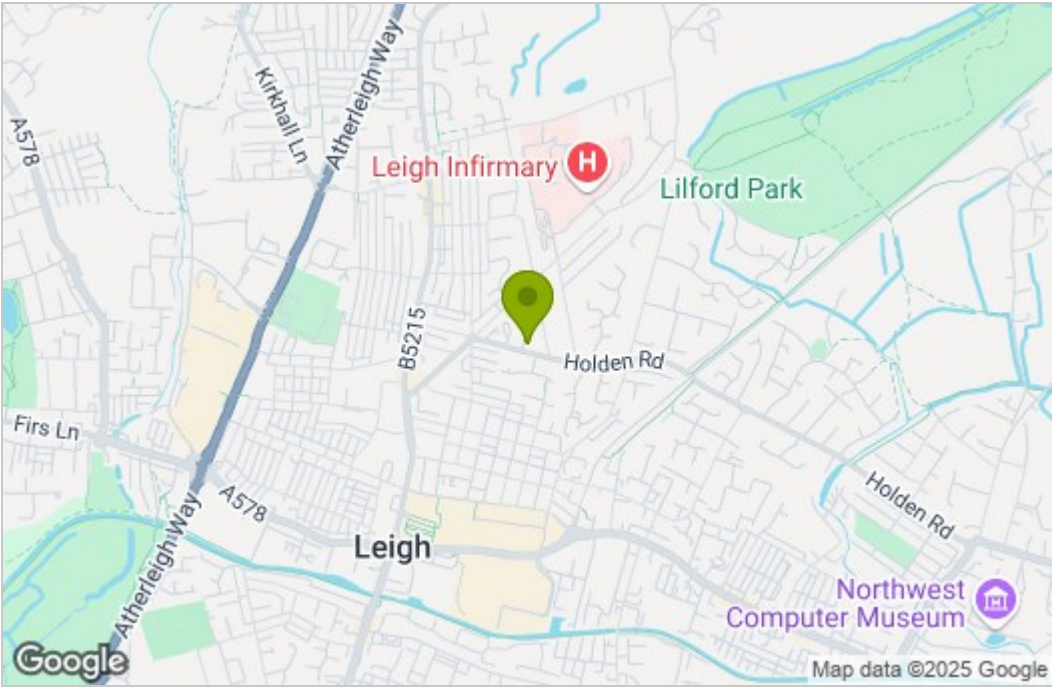


BALMER & CO in LEIGH are delighted to offer FOR SALE this fantastic three bedroom mid-terrace house situation on Holden Road, Leigh. Offered with no onward chain and very nicely presented throughout, this property offers excellent living accommodation throughout. Comprising in brief of entrance hallway, large bay fronted living room with feature gas fireplace and surround, dining/sitting room, with a modern fitted kitchen to the rear completing the ground floor. To the first floor is a large master bedroom with fitted wardrobes, second double bedroom with fitted wardrobes, third single bedroom, with a three piece family bathroom completing the first floor. The loft space above has also been converted into a useable space with entry still via the loft hatch completing accommodation on offer. Externally the property is garden fronted, whilst to the rear there is a fully enclosed yard with outhouse. Early viewings highly recommended, all enquiries welcome.

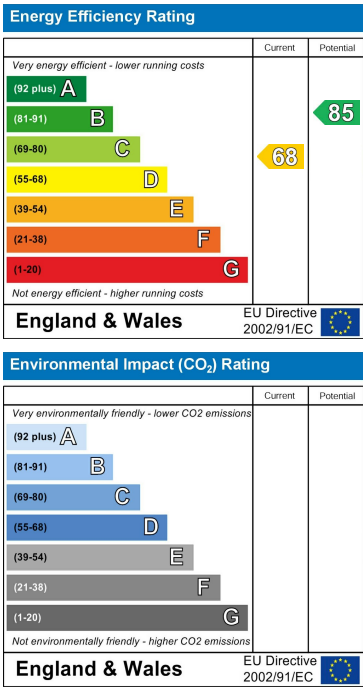
Floor Plan



Area Map



Energy Efficiency Graph



These particulars, whilst believed to be accurate are set out as a general outline only for guidance and do not constitute any part of an offer or contract. Intending purchasers should not rely on them as statements of representation of fact, but must satisfy themselves by inspection or otherwise as to their accuracy. No person in this firms employment has the authority to make or give any representation or warranty in respect of the property.