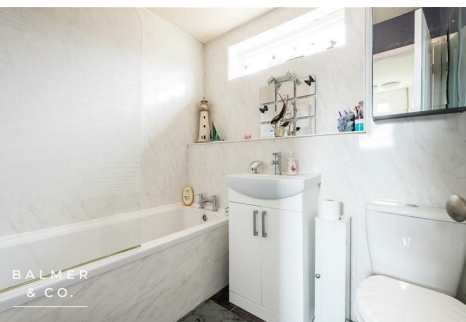
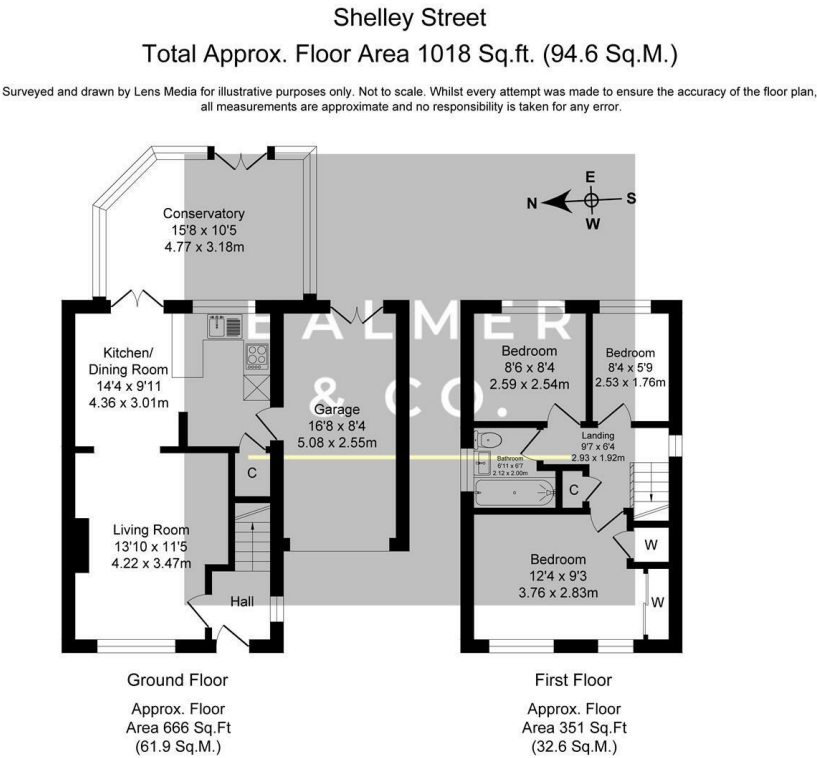


Shelley Street, Leigh, WN7 5EX
Offers Over £200,000

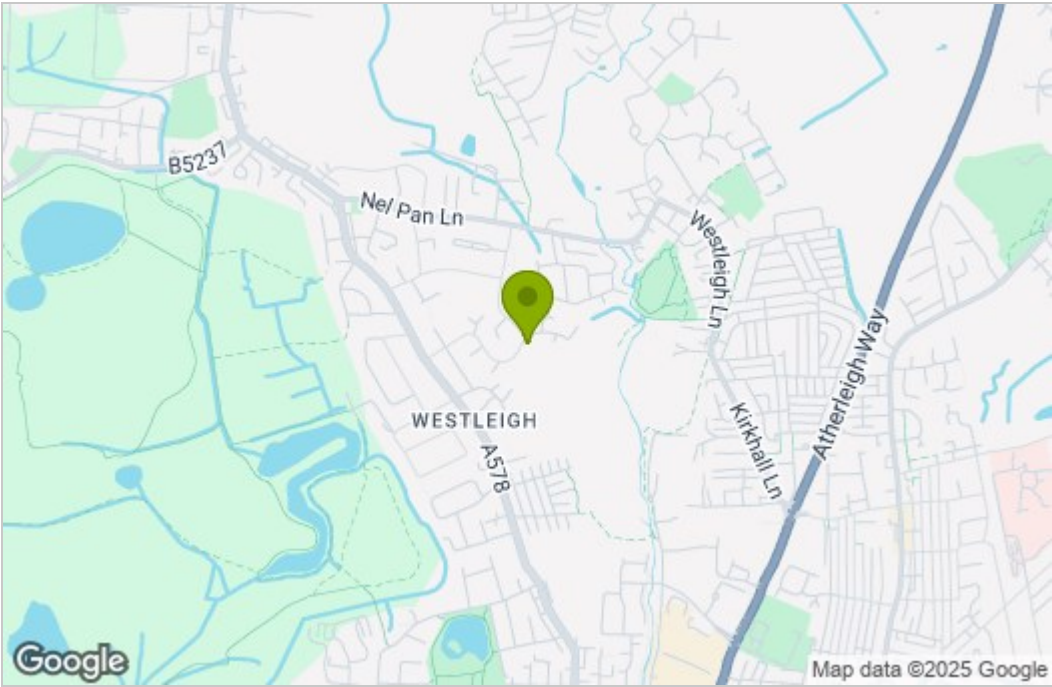


BALMER & CO in LEIGH are delighted to offer FOR SALE this three bedroom detached house in Leigh. Extended to the rear and with a private, South-facing garden, this property makes an excellent family home. Comprising in brief of entrance hallway, large living room with feature fireplace and surround, modern fitted kitchen/dining room with integrated appliances, with a large conservatory to the rear completing the ground floor. To the first floor is a large master bedroom with fitted wardrobes, second double bedroom, third single bedroom, with three piece family bathroom completing the accommodation on offer. Outside the property has a large driveway and garage to the front offering ample off-road parking and storage, whilst to the rear there is a fully enclosed, South-facing, private garden. Early viewings highly recommended, all enquiries welcome.

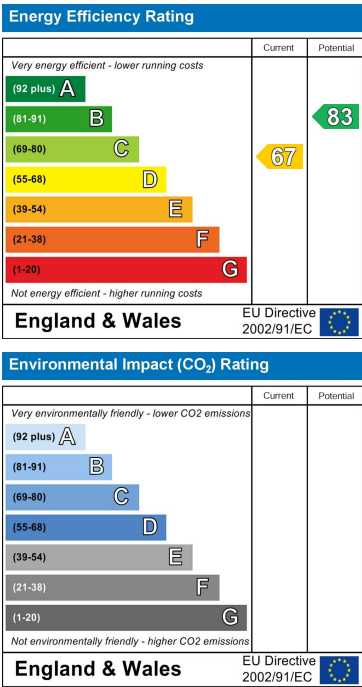
Floor Plan



Area Map



Energy Efficiency Graph



These particulars, whilst believed to be accurate are set out as a general outline only for guidance and do not constitute any part of an offer or contract. Intending purchasers should not rely on them as statements of representation of fact, but must satisfy themselves by inspection or otherwise as to their accuracy. No person in this firms employment has the authority to make or give any representation or warranty in respect of the property.