



Main Street, Stonnall, Walsall

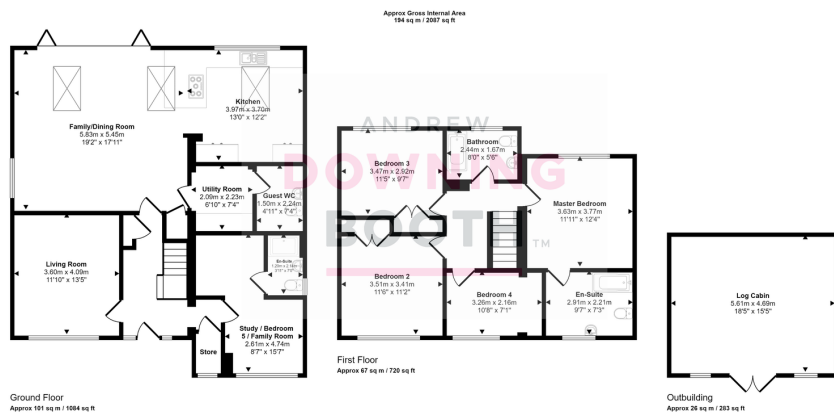
£700,000

5 3 2



If you're a family who likes to entertain, then this is the home for you! Sitting in the highly desirable village of Stonnall, this substantially extended property sits on a large plot with an open plan family kitchen diner that will make you want to invite the whole family over! The property has been updated right throughout and boasts very generous dimensions, even benefitting from having a log cabin in the rear garden. The accommodation comprises a through entrance hall, living room, spectacular open plan family kitchen diner with bi-fold doors, a utility room with guest WC off and a flexible ground floor room which could either be a study, family room or 5th bedroom, which also has an en-suite off. Upstairs are four further bedrooms, three of which are large doubles, the fourth being a generous single. There is also a modern bathroom and a fabulous large en-suite to the master. Outside will impress you just as much, with a large block paved drive providing plenty of parking for all those guests, whilst to the rear is a large plot with paved patio, lawn and that log cabin, providing a useful gym, home office or secondary entertaining area. There aren't many homes that come to market quite like this, so don't miss out and book in your visit today!





- Four / Five Bedroom Detached Home
- Living Room & Study / Family Room / Bedroom Five With En-suite
- Large Garden, Log Cabin & Generous Driveway Providing Plenty Of Parking
- Superbly Appointed Throughout With A Spectacular Open Plan Family Room, Kitchen, Dining Room, Guest WC & Contemporary Bathroom & En-Suite
- Sitting In The Highly Desirable Village Of Stonnall

