





# Mount Road, Pelsall, Walsall - No Upward Chain & Flexible Fourth Bedroom

£275,000

🛏 3 🚿 2 🛋 2





**No upward chain - An exceptionally spacious three/four double bedroom home, boasting a particularly private and impressive plot, and simply bursting with potential.**

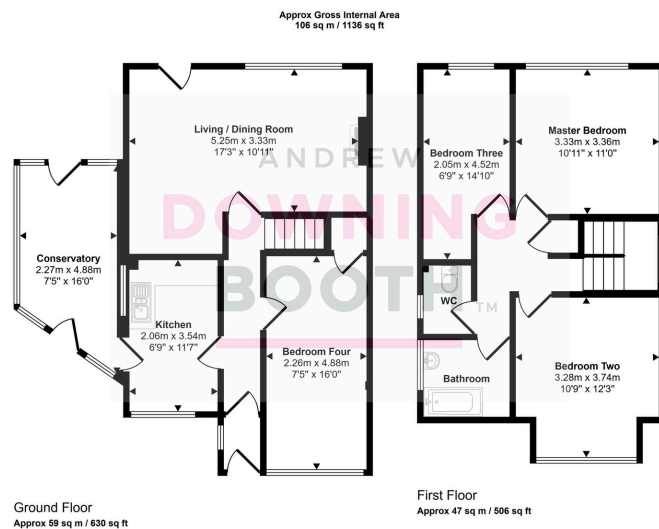
**Nestled in the heart of Pelsall, Mount Road offers a charming blend of peaceful suburban living and excellent convenience. Surrounded by green spaces, local schools, and amenities, this practical location is ideal for families and commuters alike. With easy access to Walsall and major transport links, Mount Road combines the best of countryside charm and urban connectivity.**

**The accommodation offers generous dimensions throughout and is set across two floors; the ground floor featuring a substantial living/dining room, kitchen, conservatory and very flexible fourth bedroom/additional reception room (courtesy of a garage conversion) whilst the first floor is home to the three main double bedrooms, bathroom and WC. A lawn and triple length driveway sit to the frontage, whilst an enclosed and impressive garden can be found to the rear, again offering superb scope and possibility.**

**This property is simply crying out for someone to come and transform it into the exceptional family home that it promises to be; we must advise booking a viewing at your earliest convenience to see the potential for yourself.**







This floorplan is only for illustrative purposes and is not to scale. Measurements of rooms, doors, windows, and any items are approximate and no responsibility is taken for any error, omission or mis-statement. Icons of items such as bathroom suites are representations only and may not look like the real items. Made with Made Snappy 360.

- Three / Four Bedroom Detached Family Home
- Requiring Modernisation Throughout
- Quiet & Tucked Away End Of Cul-De-Sac Position
- Large Driveway Plus Very Private & Generous Rear Garden
- Council Tax Band: C
- No Upward Chain
- Absolutely Bursting With Potential
- Impressive Room Sizes
- Convenient & Practical Location With Easy Access To Amenities
- EPC Rating: TBC

