



Your Logo

Whitworth Drive, Stone Cross, West Bromwich

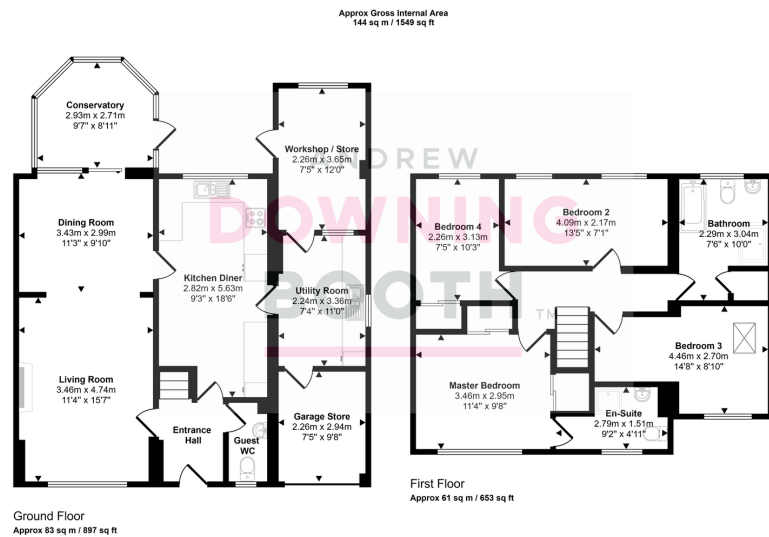
Offers In Region Of £400,000

🛏 4 🍳 2 🚗 2



Tick, Tick, Tick. No, that's not the sound of a broken clock, it is the sound of your boxes being ticked off, one by one by this stunning detached home! Coming to the market wonderfully appointed throughout, this spacious and extended property is going to really appeal to a modern day family, with its spacious bedrooms, lovely plot, ample parking and generous accommodation. The accommodation is well laid out and comprises a through entrance hall, generous living room, dining room and conservatory whilst there is a superb contemporary kitchen diner. There is also a modern guest WC, very large utility room with store / workshop off and a useful garage store. Upstairs, this is where the extensions have completely transformed this home, to create four double bedrooms, a very spacious and stunning family bathroom and an en-suite to the master. Outside is just tremendous too, with a large block paved driveway and a gate opening down one side to a magnificent rear garden which is split into two sections, comprising lawns, paved patios and a useful garden shed. This simply has to be viewed! Don't miss out as this is sure to be popular!





- Large Four Double Bedroom
- Beautifully Appointed Throughout
- Large Living Room, Dining Room & Conservatory
- Stunning Bathroom With Four Piece Suite & En-Suite
- Guest WC, Vast Utility Room, Store / Workshop & Garage Store
- Beautiful Plot With Large Rear Garden & Driveway Providing Plenty Of Parking

