



Maple Road, Pelsall

£220,000

3 1 2



No upward chain - A spacious, light and airy three bedroom home, boasting a fabulous corner plot with the rare added benefit of having no upward chain. This charming semi-detached property in Maple Road, Pelsall, offers significant potential to be transformed into a wonderful family home, being within walking distance to both Pelsall Common and the highly regarded St Michael's C Of E Infant & Junior School, whilst Walsall's town centre is just a short drive away, home to various transport links, shops, eateries and gyms. The accommodation is spread across two floors, with a free-flowing ground floor made up a good size living room and wonderfully open kitchen and dining area, whilst the first floor is home to all three bedrooms and the contemporary bathroom. The aforementioned impressive corner plot features a well maintained lawn, plenty of colourful and established shrubs, a slab paved patio, garage and private driveway.

This property offers exceptional value for money and an abundance of promise; book in a viewing to avoid disappointment.

Entrance Hall

Living Room - 2.85m x 5.13m (9'4" x 16'9")

Kitchen - 2.58m x 2.36m (8'5" x 7'8")

Dining Room - 4.11m x 2.63m (13'5" x 8'7")

Landing

Master Bedroom - 3.17m x 3.25m (10'4" x 10'7")

Bedroom Two - 2.6m x 2.93m (8'6" x 9'7")

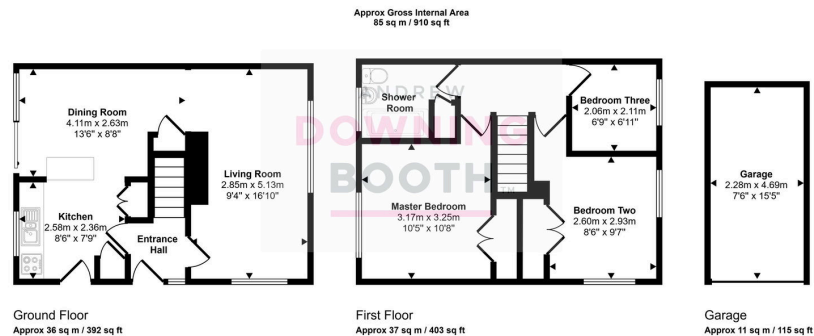
Bedroom Three - 2.06m x 2.11m (6'9" x 6'11")

Shower Room

Exterior

Garage - 2.28m x 4.69m (7'5" x 15'4")





This floorplan is only for illustrative purposes and is not to scale. Measurements of rooms, doors, windows, and any items are approximate and no responsibility is taken for any error, omission or mis-statement. Icons of items such as bathroom suites are representations only and may not look like the real items. Made with Made Snappy 360.

- Three Bedroom Semi-Detached House
- Fabulous Corner Plot
- Consistently Generous Room Sizes Throughout
- EPC Rating: E
- No Upward Chain
- Garage & Parking To The Rear
- Dual Aspect Living Room
- Council Tax Band: C

