

# The Quarters

@ Redhill

CONSUMER  
CODE FOR  
HOME BUILDERS

[www.consumercode.co.uk](http://www.consumercode.co.uk)

Bovis  
Homes 



# The Quarters

@ Redhill

Development plan

[bovishomes.co.uk](http://bovishomes.co.uk)

**Bovis  
Homes** 

# The Quarters

Redhill

3 bedroom home

The Hazel

The Spruce

The Spruce II

The Cypress

4 bedroom home

The Juniper

The Chestnut

The Aspen

The Maple

The Alder

5 bedroom home

The Birch

Affordable housing

bcp bin collection point  
ss substation



# The Quarters

Redhill



- 3 bedroom home**

  - The Hazel
  - The Spruce
  - The Cypress
- 4 bedroom home**

  - The Juniper
  - The Chestnut
  - The Aspen
  - The Maple
  - The Alder
- 5 bedroom home**

  - The Birch
- Affordable housing

bcp bin collection point

gg gas governor

ss substation

# The Quarters

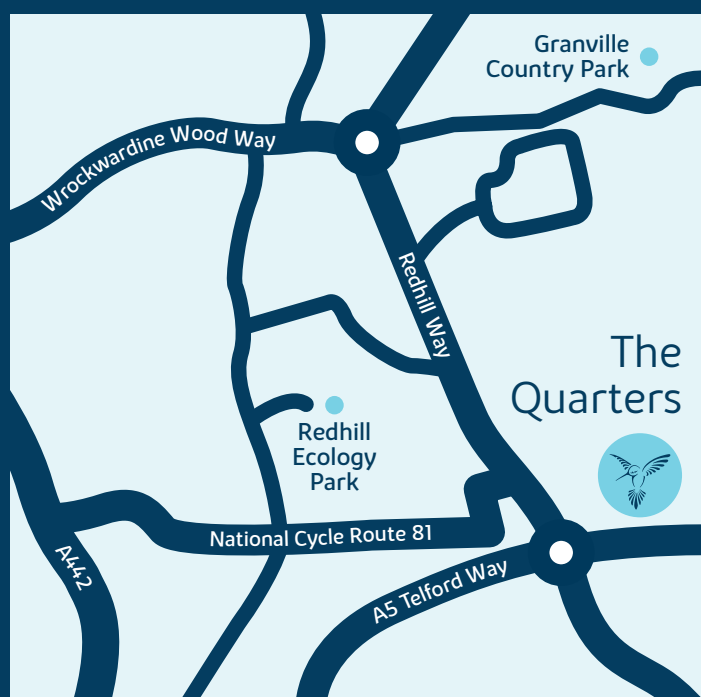
Redhill Way,  
Telford TF2 9PB

## From Shrewsbury

- Head towards the A458 using A5191
- Get onto the M54 and leave at Junction 4
- Get onto the A4640 and then at the second roundabout take the 2nd exit
- Follow onto Checkley Lane and then Cricketers Lane
- At the roundabout take the 1st exit for Limekiln Bank and follow it round to the left until it changes to Lodgewood lane and arrive at our development

## From Wolverhampton

- Head towards A548 using the A5191
- Turn right to stay on A458 until the roundabout then take the 2nd exit
- Get onto the M54 and leave at Junction 4 the head for the A4640
- Follow onto Checkley Lane and then Cricketers Lane
- At the roundabout take the 1st exit for Limekiln Bank and follow it round to the left until it changes to Lodgewood lane and arrive at our development



This plan has been produced for home identification purposes only and may be subject to change. Please check the details of your chosen plot and house type with the sales consultant. Development layout plan correct at time of going to print.

**Bovis Homes Limited, Mercia region**  
Dunston Hall, Dunston, Stafford, Staffordshire ST18 9AB. Telephone: 01785 714 412

Produced by the Vistry Group Design Studio.

When you have finished with this leaflet please recycle it.

NBNRED DS06015 / 05.23







# The Hazel

3 bedroom home

[bovishomes.co.uk](http://bovishomes.co.uk)

**Bovis  
Homes** 

# The Hazel

## 3 bedroom home

| Ground floor          | metres      | feet / inches   |
|-----------------------|-------------|-----------------|
| Kitchen / dining room | 5.17 x 2.97 | 17' 0" x 9' 9"  |
| Sitting room          | 4.17 x 3.66 | 13' 8" x 12' 0" |

### First floor

|           |             |                 |
|-----------|-------------|-----------------|
| Bedroom 1 | 3.53 x 3.29 | 11' 7" x 10' 9" |
| Bedroom 2 | 2.94 x 2.72 | 9' 8" x 8' 11"  |
| Bedroom 3 | 2.15 x 1.97 | 7' 0" x 6' 6"   |

|     |                       |       |                      |
|-----|-----------------------|-------|----------------------|
| ovn | oven                  | ffzs  | fridge freezer space |
| h   | hob                   | cup'd | cupboard             |
| ds  | dishwasher space      | ◀ ▶   | measuring points     |
| ws  | washing machine space |       |                      |

### The Hazel | X305 01 NBNRED |

The floorplan has been produced for illustrative purposes only. Room sizes shown are between arrow points as indicated on plan. The dimensions have tolerances of + or -50mm and should not be used other than for general guidance. If specific dimensions are required, enquiries should be made to the sales consultant. The floor plans shown are not to scale. Measurements are based on the original drawings. Slight variations may occur during construction.

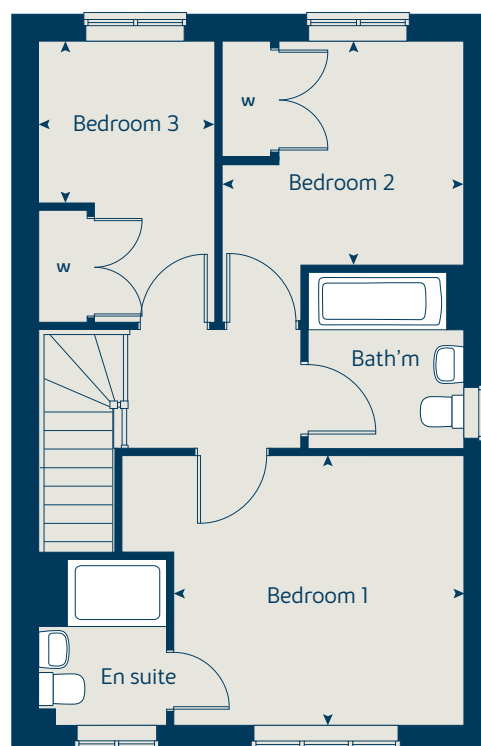
The illustrations shown are computer generated impressions of how the property may look and are indicative only. External details or finishes may vary on individual plots and homes may be built in either detached or attached styles depending on the development layout. Exact specifications, window styles and whether a property is left or right-handed may differ from plot to plot. Please speak to our sales consultant for specific plot details.

Produced by the Vistry Group Design Studio.

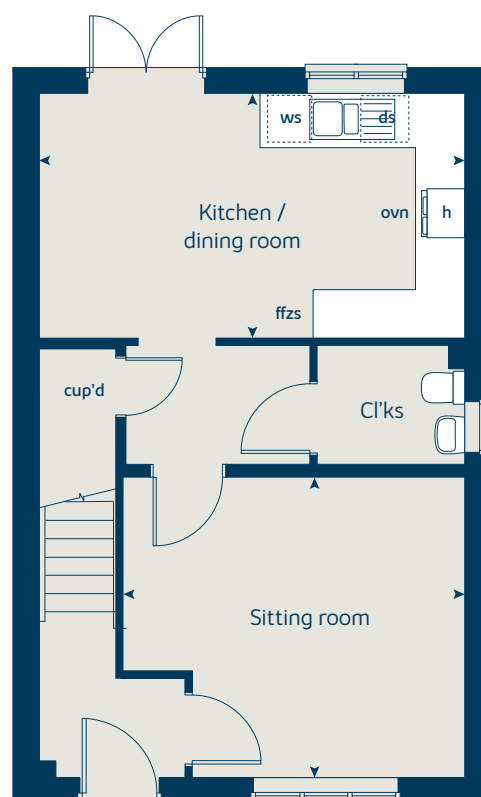
When you have finished with this leaflet please recycle it.

NBNRED D508189 / 11.23

## First floor



## Ground floor







# The Spruce

3 bedroom home

[bovishomes.co.uk](https://bovishomes.co.uk)

**Bovis  
Homes** 



# The Spruce

## 3 bedroom home

| Ground floor | metres      | feet / inches    |
|--------------|-------------|------------------|
| Kitchen      | 3.23 x 2.69 | 10' 7" x 8' 9"   |
| Dining area  | 3.14 x 2.30 | 10' 3" x 7' 6"   |
| Sitting room | 5.53 x 3.32 | 18' 1" x 10' 10" |

### First floor

|           |             |                  |
|-----------|-------------|------------------|
| Bedroom 1 | 3.35 x 3.34 | 11' 0" x 11' 0"  |
| Bedroom 2 | 3.60 x 3.27 | 11' 11" x 10' 8" |
| Bedroom 3 | 3.63 x 2.17 | 11' 11" x 7' 1"  |

|     |                       |       |                      |
|-----|-----------------------|-------|----------------------|
| ovn | oven                  | ffzs  | fridge freezer space |
| h   | hob                   | cup'd | cupboard             |
| ds  | dishwasher space      | w     | wardrobe             |
| ws  | washing machine space | ◀ ▶   | measuring points     |

### The Spruce | X307 (IF) 01 NBNRED |

The floorplan has been produced for illustrative purposes only. Room sizes shown are between arrow points as indicated on plan. The dimensions have tolerances of + or -50mm and should not be used other than for general guidance. If specific dimensions are required, enquiries should be made to the sales consultant. The floor plans shown are not to scale. Measurements are based on the original drawings. Slight variations may occur during construction.

The illustrations shown are computer generated impressions of how the property may look and are indicative only. External details or finishes may vary on individual plots and homes may be built in either detached or attached styles depending on the development layout. Exact specifications, window styles and whether a property is left or right-handed may differ from plot to plot. Please speak to our sales consultant for specific plot details.

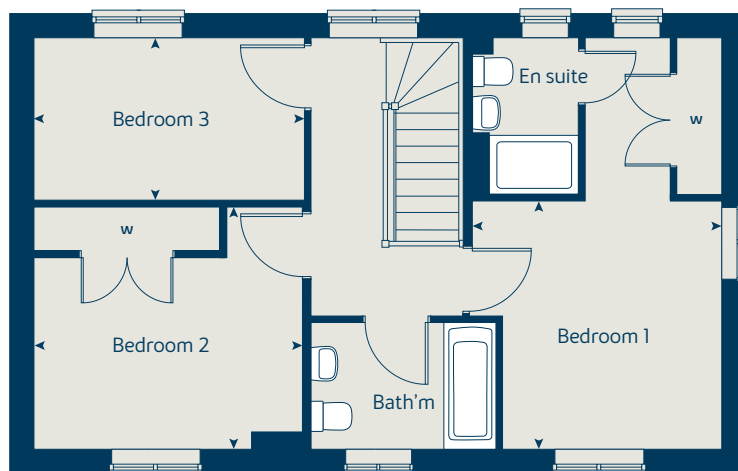
- ① Alternative front door / window layout applies to selected plots only. Please see sales consultant for further details.

Produced by the Vistry Group Design Studio.

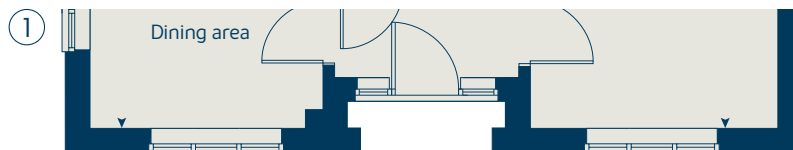
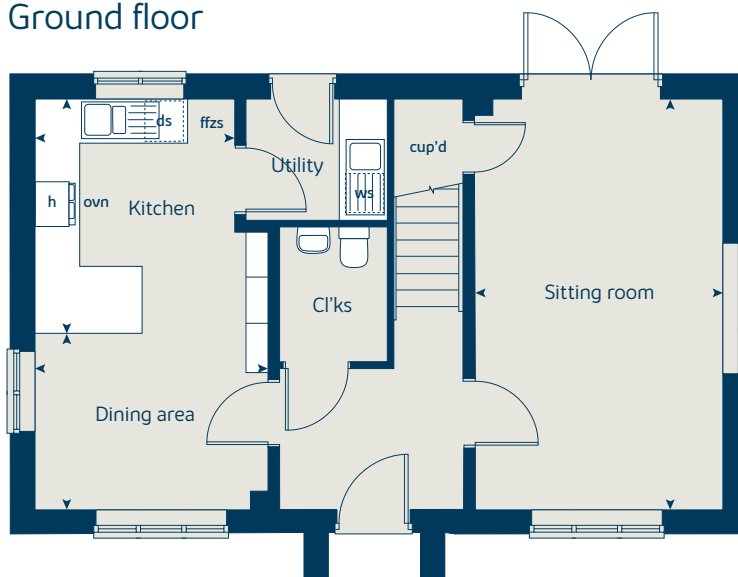
When you have finished with this leaflet please recycle it.

NBNRED DS08189 / 11.23

### First floor



### Ground floor





# The Spruce II

3 bedroom home

[bovishomes.co.uk](http://bovishomes.co.uk)

**Bovis  
Homes** 

# The Spruce II

## 3 bedroom home

| Ground floor | metres      | feet / inches    |
|--------------|-------------|------------------|
| Kitchen      | 3.23 x 2.69 | 10' 7" x 8' 9"   |
| Dining area  | 3.14 x 2.30 | 10' 3" x 7' 6"   |
| Sitting room | 5.53 x 3.32 | 18' 1" x 10' 10" |

### First floor

|           |             |                  |
|-----------|-------------|------------------|
| Bedroom 1 | 3.35 x 3.34 | 11' 0" x 11' 0"  |
| Bedroom 2 | 3.60 x 3.27 | 11' 11" x 10' 8" |
| Bedroom 3 | 3.63 x 2.17 | 11' 11" x 7' 1"  |

|     |                       |       |                      |
|-----|-----------------------|-------|----------------------|
| ovn | oven                  | ffzs  | fridge freezer space |
| h   | hob                   | cup'd | cupboard             |
| ds  | dishwasher space      | ◀ ▶   | measuring points     |
| ws  | washing machine space |       |                      |

### The Spruce II | M307 NBNRED |

The floorplan has been produced for illustrative purposes only. Room sizes shown are between arrow points as indicated on plan. The dimensions have tolerances of + or -50mm and should not be used other than for general guidance. If specific dimensions are required, enquiries should be made to the sales consultant. The floor plans shown are not to scale. Measurements are based on the original drawings. Slight variations may occur during construction.

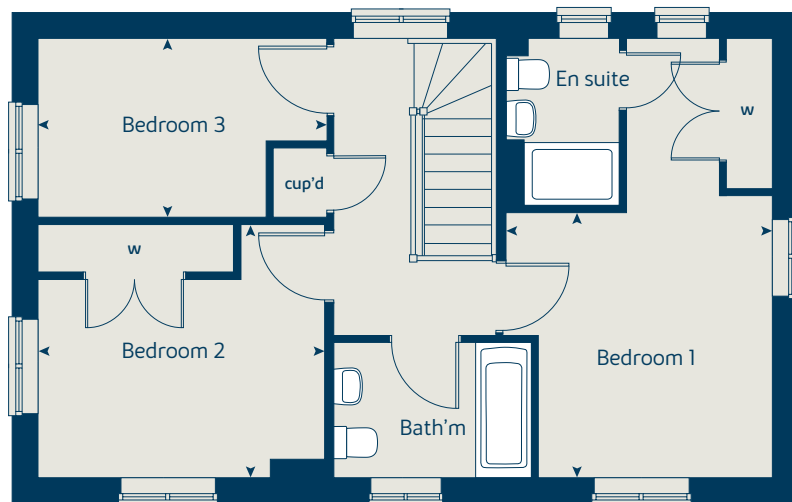
The illustrations shown are computer generated impressions of how the property may look and are indicative only. External details or finishes may vary on individual plots and homes may be built in either detached or attached styles depending on the development layout. Exact specifications, window styles and whether a property is left or right-handed may differ from plot to plot. Please speak to our sales consultant for specific plot details.

Produced by the Vistry Group Design Studio.

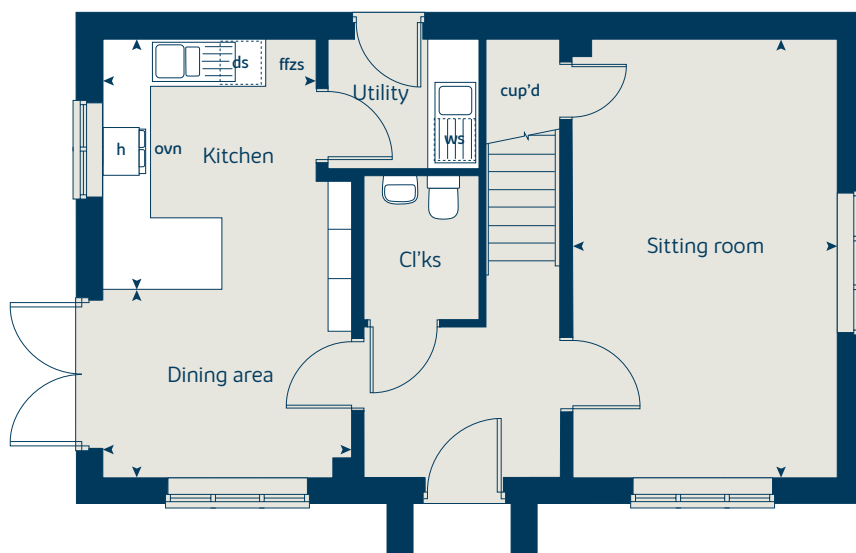
When you have finished with this leaflet please recycle it.

NBNRED DS08189 / 11.23

## First floor



## Ground floor







# The Cypress

3 bedroom home

[bovishomes.co.uk](http://bovishomes.co.uk)

**Bovis  
Homes** 

# The Cypress

## 3 bedroom home

| Ground floor          | metres      | feet / inches   |
|-----------------------|-------------|-----------------|
| Kitchen / dining area | 5.52 x 3.12 | 18' 1" x 10' 2" |
| Sitting room          | 4.41 x 3.40 | 14' 5" x 11' 2" |

### First floor

|           |             |                 |
|-----------|-------------|-----------------|
| Bedroom 1 | 4.10 x 3.28 | 13' 5" x 10' 9" |
| Bedroom 2 | 3.28 x 2.83 | 10' 9" x 9' 3"  |
| Bedroom 3 | 3.52 x 2.16 | 11' 6" x 7' 1"  |

|     |                       |       |                      |
|-----|-----------------------|-------|----------------------|
| ovn | oven                  | ffzs  | fridge freezer space |
| h   | hob                   | cup'd | cupboard             |
| ds  | dishwasher space      | ◀ ▶   | measuring points     |
| ws  | washing machine space |       |                      |

### The Cypress | X308 (IF) 01 NBNRED |

The floorplan has been produced for illustrative purposes only. Room sizes shown are between arrow points as indicated on plan. The dimensions have tolerances of + or -50mm and should not be used other than for general guidance. If specific dimensions are required, enquiries should be made to the sales consultant. The floor plans shown are not to scale. Measurements are based on the original drawings. Slight variations may occur during construction.

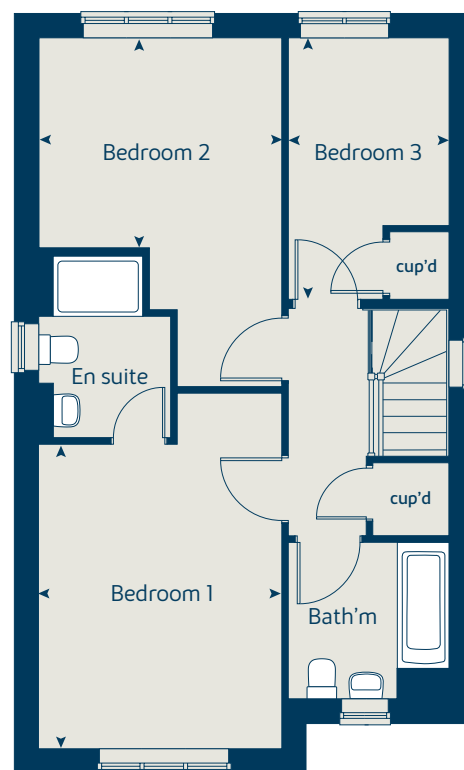
The illustrations shown are computer generated impressions of how the property may look and are indicative only. External details or finishes may vary on individual plots and homes may be built in either detached or attached styles depending on the development layout. Exact specifications, window styles and whether a property is left or right-handed may differ from plot to plot. Please speak to our sales consultant for specific plot details.

Produced by the Vistry Group Design Studio.

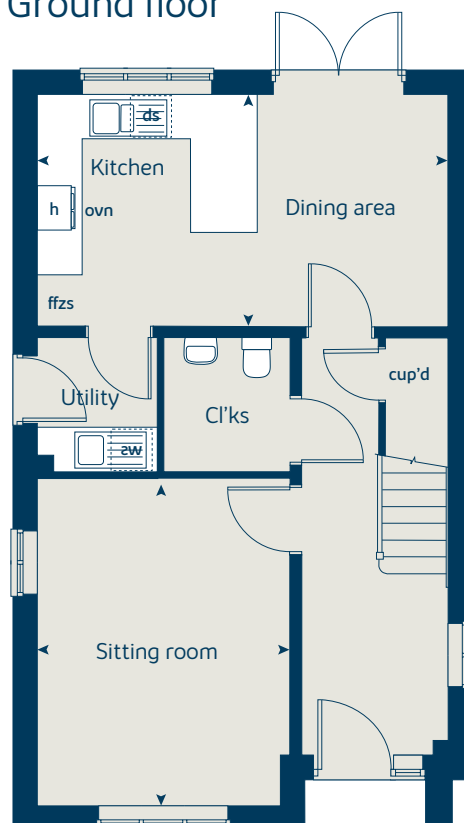
When you have finished with this leaflet please recycle it.

NBNRED DS08189 / 11.23

## First floor



## Ground floor







# The Juniper

4 bedroom home

[bovishomes.co.uk](http://bovishomes.co.uk)

**Bovis  
Homes** 



# The Juniper

## 4 bedroom home

| Ground floor                   | metres      | feet / inches   |
|--------------------------------|-------------|-----------------|
| Kitchen / dining / family area | 7.21 x 3.52 | 23' 7" x 11' 6" |
| Sitting room                   | 4.55 x 3.04 | 14' 7" x 10' 0" |
| Study                          | 2.34 x 1.85 | 7' 8" x 6' 0"   |

### First floor

|           |             |                 |
|-----------|-------------|-----------------|
| Bedroom 1 | 4.66 x 3.05 | 15' 3" x 10' 0" |
| Bedroom 2 | 2.97 x 2.84 | 9' 8" x 9' 3"   |
| Bedroom 3 | 3.51 x 2.38 | 11' 6" x 7' 9"  |
| Bedroom 4 | 3.61 x 2.38 | 11' 10" x 7' 9" |

|     |                       |       |                  |
|-----|-----------------------|-------|------------------|
| ovn | oven                  | ffzr  | fridge freezer   |
| h   | hob                   | w     | wardrobe         |
| ds  | dishwasher space      | cup'd | cupboard         |
| ws  | washing machine space | ◀ ▶   | measuring points |
| ldr | larder                |       |                  |

### The Juniper | X412 01 NBNRED |

The floorplan has been produced for illustrative purposes only. Room sizes shown are between arrow points as indicated on plan. The dimensions have tolerances of + or -50mm and should not be used other than for general guidance. If specific dimensions are required, enquiries should be made to the sales consultant. The floor plans shown are not to scale. Measurements are based on the original drawings. Slight variations may occur during construction.

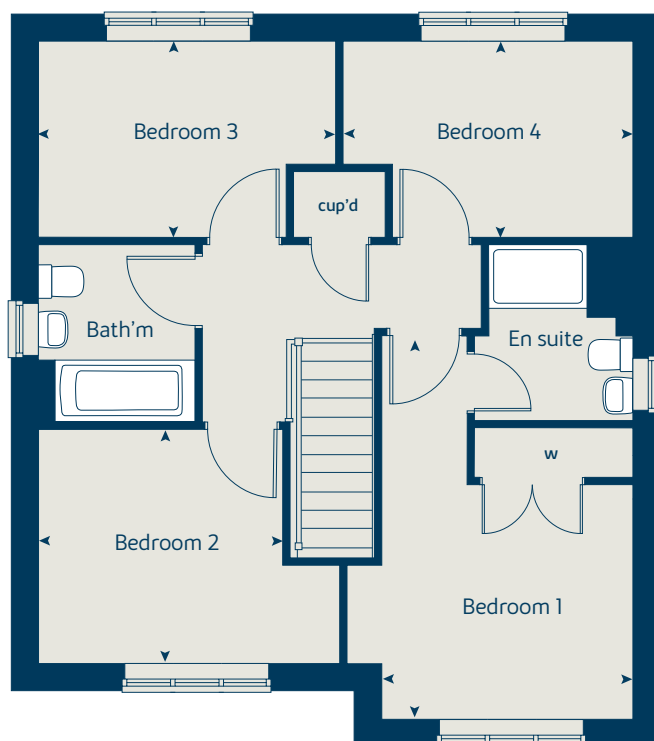
The illustrations shown are computer generated impressions of how the property may look and are indicative only. External details or finishes may vary on individual plots and homes may be built in either detached or attached styles depending on the development layout. Exact specifications, window styles and whether a property is left or right-handed may differ from plot to plot. Please speak to our sales consultant for specific plot details.

Produced by the Vistry Group Design Studio.

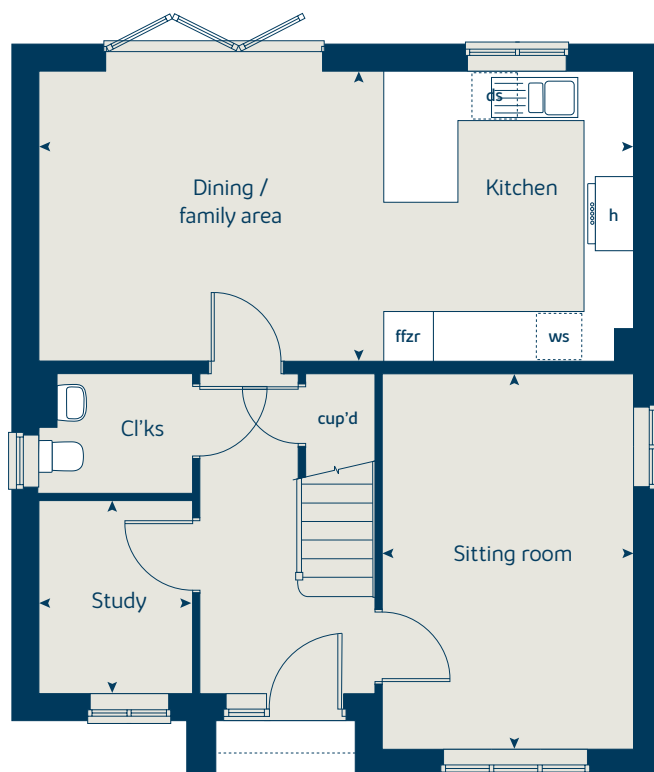
When you have finished with this leaflet please recycle it.

NBNRED DS08189 / 11.23

### First floor



### Ground floor





# The Chestnut

4 bedroom home

[bovishomes.co.uk](http://bovishomes.co.uk)

**Bovis  
Homes** 

# The Chestnut

## 4 bedroom home

| Ground floor         | metres      | feet / inches   |
|----------------------|-------------|-----------------|
| Kitchen              | 4.03 x 3.04 | 13' 2" x 9' 11" |
| Dining / family area | 4.59 x 2.85 | 15' 0" x 9' 4"  |
| Sitting room         | 4.98 x 3.40 | 16' 4" x 11' 1" |
| Study                | 3.40 x 1.81 | 11' 1" x 5' 11" |

| First floor | metres      | feet / inches   |
|-------------|-------------|-----------------|
| Bedroom 1   | 4.47 x 3.24 | 14' 8" x 10' 8" |
| Bedroom 2   | 3.48 x 3.36 | 11' 5" x 11' 0" |
| Bedroom 3   | 3.44 x 2.31 | 11' 3" x 7' 7"  |
| Bedroom 4   | 3.21 x 2.35 | 10' 6" x 7' 8"  |

|     |                       |       |                  |
|-----|-----------------------|-------|------------------|
| ovn | oven                  | ffzr  | fridge freezer   |
| h   | hob                   | w     | wardrobe         |
| ds  | dishwasher space      | cup'd | cupboard         |
| ws  | washing machine space | ◀ ▶   | measuring points |
| ldr | larder                |       |                  |

### The Chestnut | X413 01 NBNRED |

The floorplan has been produced for illustrative purposes only. Room sizes shown are between arrow points as indicated on plan. The dimensions have tolerances of + or -50mm and should not be used other than for general guidance. If specific dimensions are required, enquiries should be made to the sales consultant. The floor plans shown are not to scale. Measurements are based on the original drawings. Slight variations may occur during construction.

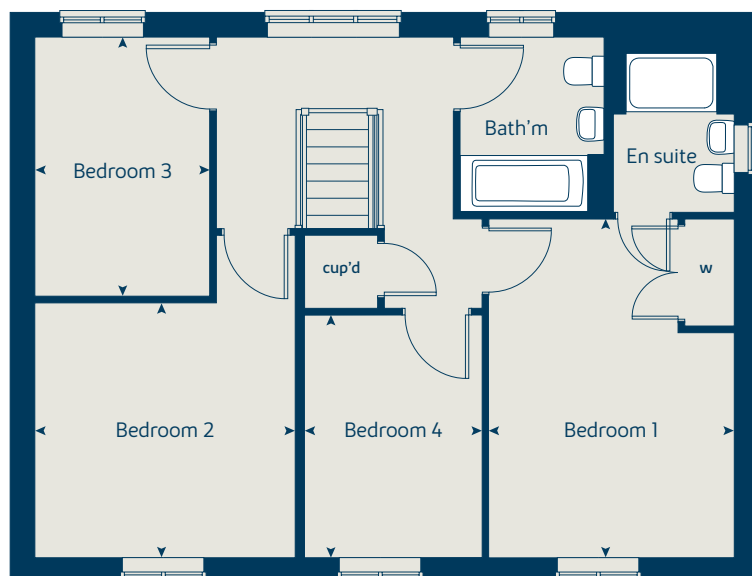
The illustrations shown are computer generated impressions of how the property may look and are indicative only. External details or finishes may vary on individual plots and homes may be built in either detached or attached styles depending on the development layout. Exact specifications, window styles and whether a property is left or right-handed may differ from plot to plot. Please speak to our sales consultant for specific plot details.

Produced by the Vistry Group Design Studio.

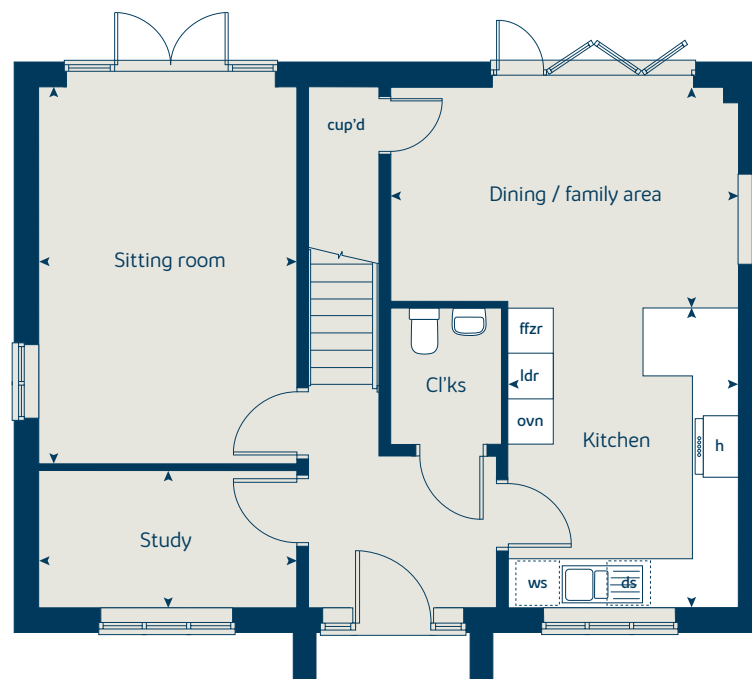
When you have finished with this leaflet please recycle it.

NBNRED DS08189 / 11.23

### First floor



### Ground floor







# The Aspen

4 bedroom home

[bovishomes.co.uk](http://bovishomes.co.uk)

**Bovis  
Homes** 

# The Aspen

## 4 bedroom home

| Ground floor          | metres      | feet / inches   |
|-----------------------|-------------|-----------------|
| Kitchen / dining area | 7.77 x 3.37 | 25' 6" x 11' 0" |
| Sitting room          | 5.04 x 3.39 | 16' 6" x 11' 1" |
| Study                 | 2.01 x 2.01 | 6' 7" x 6' 7"   |

### First floor

|           |             |                  |
|-----------|-------------|------------------|
| Bedroom 1 | 4.51 x 4.09 | 14' 10" x 13' 5" |
| Bedroom 2 | 3.60 x 3.11 | 11' 10" x 10' 2" |
| Bedroom 3 | 4.07 x 2.42 | 13' 4" x 7' 11"  |
| Bedroom 4 | 3.61 x 2.45 | 11' 10" x 8' 0"  |

|      |                       |       |                  |
|------|-----------------------|-------|------------------|
| ovn  | oven                  | ldr   | larder           |
| h    | hob                   | w     | wardrobe         |
| ds   | dishwasher space      | cup'd | cupboard         |
| ws   | washing machine space | ◀ ▶   | measuring points |
| ffzr | fridge freezer        |       |                  |

### The Aspen | X414 (1F) 01 NBNRED |

The floorplan has been produced for illustrative purposes only. Room sizes shown are between arrow points as indicated on plan. The dimensions have tolerances of + or -50mm and should not be used other than for general guidance. If specific dimensions are required, enquiries should be made to the sales consultant. The floor plans shown are not to scale. Measurements are based on the original drawings. Slight variations may occur during construction.

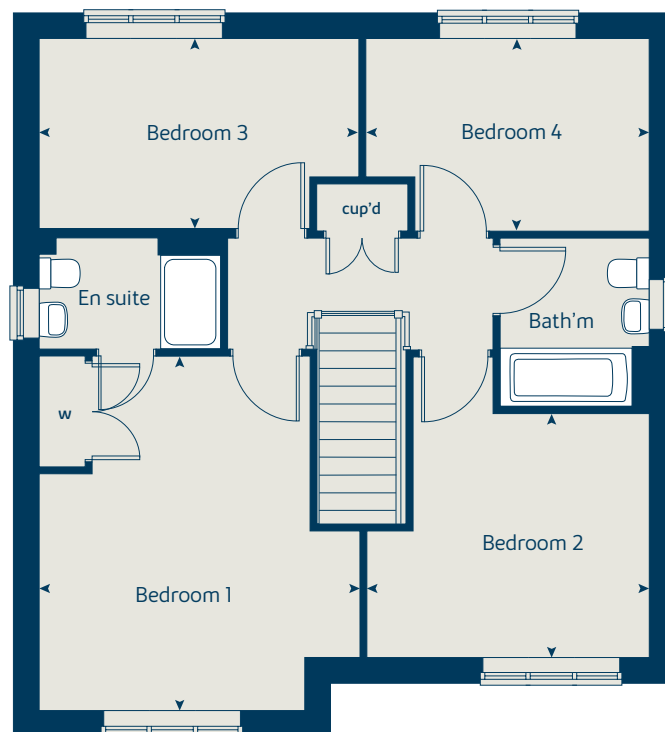
The illustrations shown are computer generated impressions of how the property may look and are indicative only. External details or finishes may vary on individual plots and homes may be built in either detached or attached styles depending on the development layout. Exact specifications, window styles and whether a property is left or right-handed may differ from plot to plot. Please speak to our sales consultant for specific plot details.

Produced by the Vistry Group Design Studio.

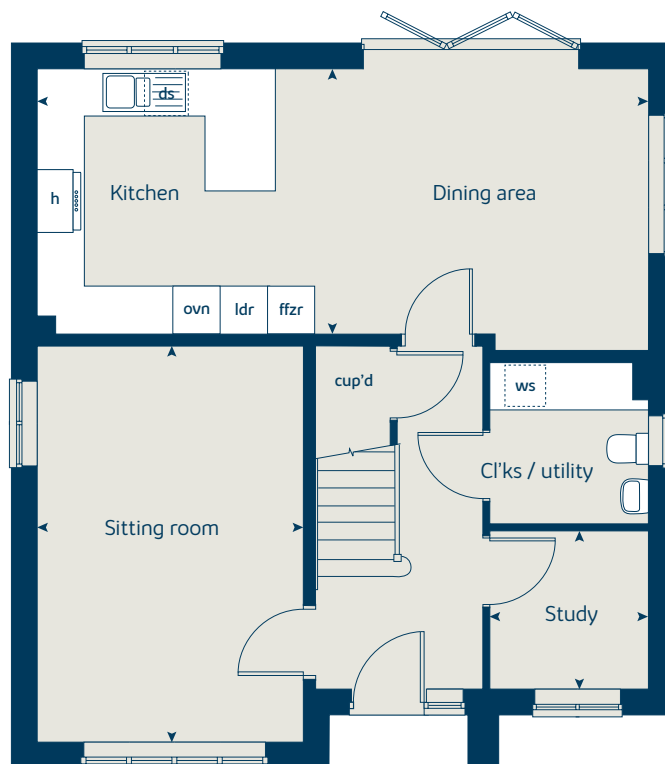
When you have finished with this leaflet please recycle it.

NBNRED DS08189 / 11.23

## First floor



## Ground floor







# The Alder

4 bedroom home

[bovishomes.co.uk](http://bovishomes.co.uk)

**Bovis  
Homes** 



# The Alder

## 4 bedroom home

| Ground floor         | metres      | feet / inches   |
|----------------------|-------------|-----------------|
| Kitchen              | 3.43 x 3.24 | 11' 3" x 10' 6" |
| Dining / family area | 5.35 x 3.24 | 17' 6" x 10' 6" |
| Sitting room         | 4.13 x 3.38 | 13' 6" x 11' 1" |

### First floor

|           |             |                  |
|-----------|-------------|------------------|
| Bedroom 1 | 3.88 x 3.38 | 12' 8" x 11' 1"  |
| Bedroom 2 | 4.44 x 3.03 | 14' 7" x 9' 11"  |
| Bedroom 3 | 3.66 x 3.03 | 12' 0" x 9' 11"  |
| Bedroom 4 | 3.35 x 3.13 | 10' 11" x 10' 3" |

|      |                       |       |                  |
|------|-----------------------|-------|------------------|
| ovn  | oven                  | ldr   | larder           |
| h    | hob                   | w     | wardrobe         |
| ds   | dishwasher space      | cup'd | cupboard         |
| ws   | washing machine space | ◀ ▶   | measuring points |
| ffzr | fridge freezer        |       |                  |

### The Alder | X415 01 NBNRED |

The floorplan has been produced for illustrative purposes only. Room sizes shown are between arrow points as indicated on plan. The dimensions have tolerances of + or -50mm and should not be used other than for general guidance. If specific dimensions are required, enquiries should be made to the sales consultant. The floor plans shown are not to scale. Measurements are based on the original drawings. Slight variations may occur during construction.

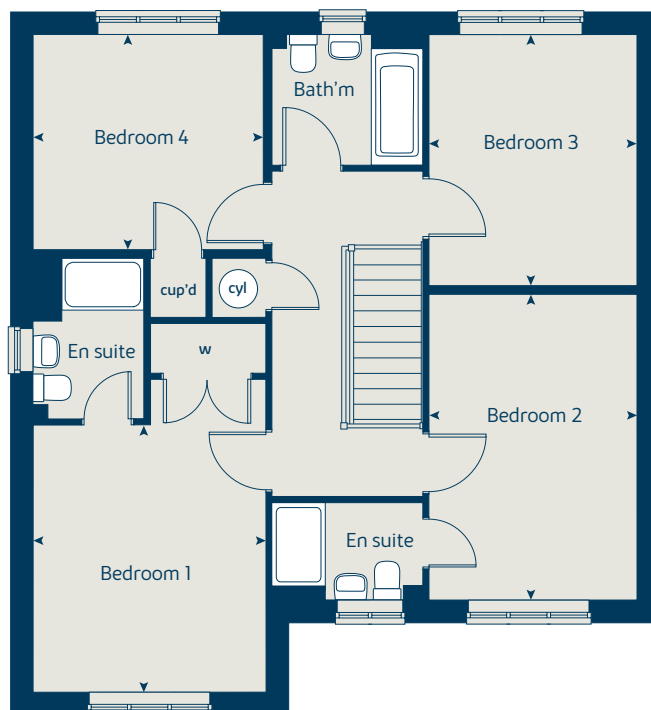
The illustrations shown are computer generated impressions of how the property may look and are indicative only. External details or finishes may vary on individual plots and homes may be built in either detached or attached styles depending on the development layout. Exact specifications, window styles and whether a property is left or right-handed may differ from plot to plot. Please speak to our sales consultant for specific plot details.

Produced by the Vistry Group Design Studio.

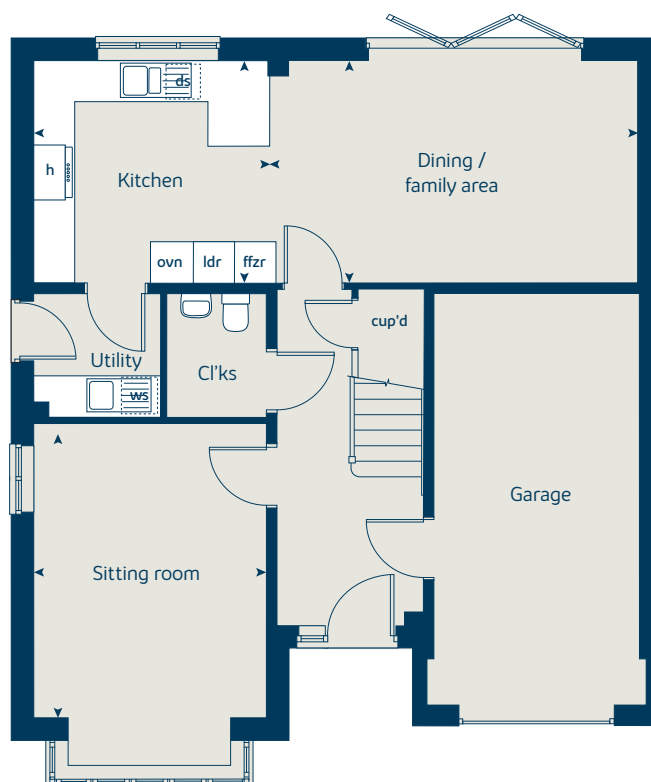
When you have finished with this leaflet please recycle it.

NBNRED DS08189 / 11.23

### First floor



### Ground floor





# The Maple

4 bedroom home

[bovishomes.co.uk](http://bovishomes.co.uk)

**Bovis  
Homes** 

# The Maple

4 bedroom home

| Ground floor         | metres      | feet / inches   |
|----------------------|-------------|-----------------|
| Kitchen              | 3.55 x 3.50 | 11' 6" x 11' 5" |
| Family / dining area | 7.29 x 3.29 | 23' 9" x 10' 8" |
| Sitting room         | 4.50 x 3.50 | 14' 9" x 11' 5" |
| Study                | 2.50 x 2.29 | 8' 2" x 7' 6"   |

## First floor

|           |             |                 |
|-----------|-------------|-----------------|
| Bedroom 1 | 6.58 x 3.50 | 21' 6" x 11' 5" |
| Bedroom 2 | 3.68 x 3.57 | 12' 0" x 11' 5" |
| Bedroom 3 | 4.13 x 2.89 | 13' 7" x 9' 5"  |
| Bedroom 4 | 2.95 x 2.89 | 9' 8" x 9' 5"   |

|      |                       |       |                    |
|------|-----------------------|-------|--------------------|
| ovn  | oven                  | cyl   | hot water cylinder |
| h    | hob                   | w     | wardrobe           |
| dw   | dishwasher            | cup'd | cupboard           |
| ws   | washing machine space | ◀ ▶   | measuring points   |
| ffzr | fridge freezer        |       |                    |

## The Maple | X416 01 NBNRED |

The floorplan has been produced for illustrative purposes only. Room sizes shown are between arrow points as indicated on plan. The dimensions have tolerances of + or -50mm and should not be used other than for general guidance. If specific dimensions are required, enquiries should be made to the sales consultant. The floor plans shown are not to scale. Measurements are based on the original drawings. Slight variations may occur during construction.

The illustrations shown are computer generated impressions of how the property may look and are indicative only. External details or finishes may vary on individual plots and homes may be built in either detached or attached styles depending on the development layout. Exact specifications, window styles and whether a property is left or right-handed may differ from plot to plot. Please speak to our sales consultant for specific plot details.

Produced by the Vistry Group Design Studio.

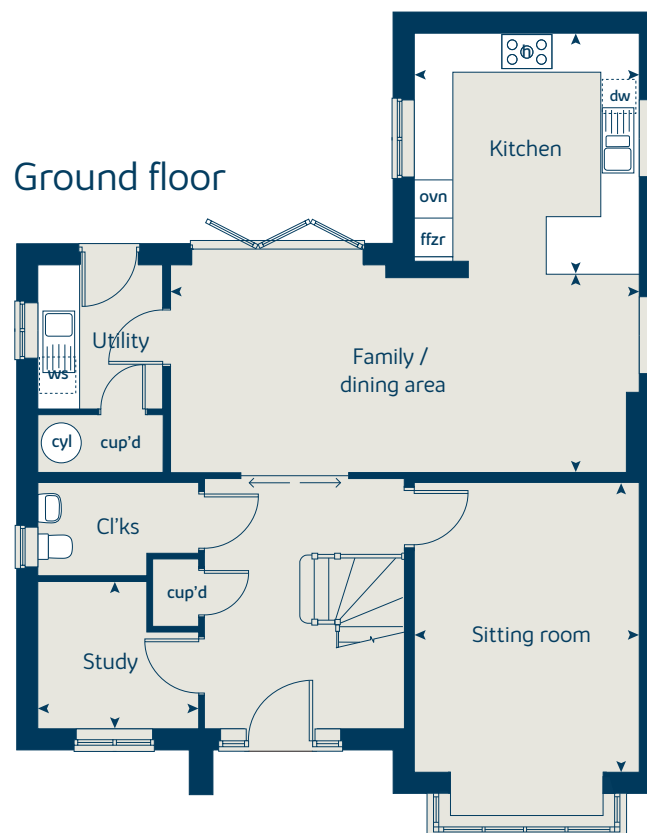
When you have finished with this leaflet please recycle it.

NBNRED DS08189 / 11.23

## First floor



## Ground floor







# The Birch

5 bedroom home

[bovishomes.co.uk](http://bovishomes.co.uk)

**Bovis  
Homes** 



# The Birch

## 5 bedroom home

| Ground floor         | metres      | feet / inches    |
|----------------------|-------------|------------------|
| Kitchen              | 3.94 x 3.71 | 12' 11" x 12' 2" |
| Family / dining area | 5.42 x 3.51 | 17' 9" x 11' 6"  |
| Sitting room         | 4.30 x 3.61 | 14' 1" x 11' 10" |
| Study / dining room  | 3.41 x 3.00 | 11' 2" x 9' 10"  |

### First floor

|           |             |                  |
|-----------|-------------|------------------|
| Bedroom 1 | 3.61 x 3.51 | 11' 10" x 11' 6" |
| Bedroom 2 | 3.92 x 2.91 | 12' 10" x 9' 7"  |
| Bedroom 3 | 3.06 x 2.75 | 10' 0" x 9' 0"   |
| Bedroom 4 | 3.31 x 2.83 | 10' 10" x 9' 3"  |
| Bedroom 5 | 2.83 x 2.70 | 9' 3" x 8' 10"   |

|      |                       |       |                    |
|------|-----------------------|-------|--------------------|
| ovn  | oven                  | ldr   | larder             |
| h    | hob                   | cyl   | hot water cylinder |
| dw   | dishwasher            | w     | wardrobe           |
| ws   | washing machine space | cup'd | cupboard           |
| ffzr | fridge freezer        | < >   | measuring points   |

### The Birch | X518 (IF) 01 NBNRED |

The floorplan has been produced for illustrative purposes only. Room sizes shown are between arrow points as indicated on plan. The dimensions have tolerances of + or -50mm and should not be used other than for general guidance. If specific dimensions are required, enquiries should be made to the sales consultant. The floor plans shown are not to scale. Measurements are based on the original drawings. Slight variations may occur during construction.

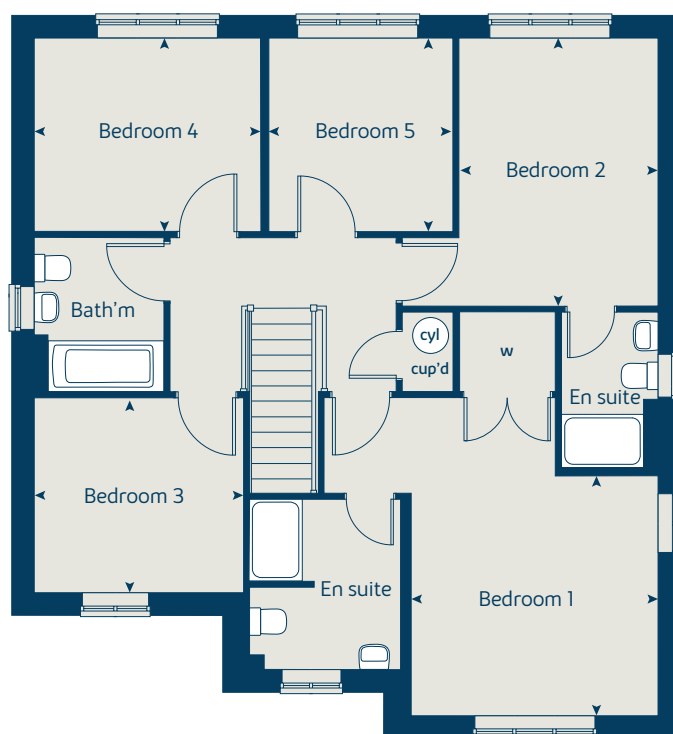
The illustrations shown are computer generated impressions of how the property may look and are indicative only. External details or finishes may vary on individual plots and homes may be built in either detached or attached styles depending on the development layout. Exact specifications, window styles and whether a property is left or right-handed may differ from plot to plot. Please speak to our sales consultant for specific plot details.

Produced by the Vistry Group Design Studio.

When you have finished with this leaflet please recycle it.

NBNRED DS08189 / 11.23

## First floor



## Ground floor





# The Quarters

@ Redhill

Specification

[bovishomes.co.uk](http://bovishomes.co.uk)

**Bovis  
Homes** 

# The Quarters

## @ Redhill

Use this guide to see what features are included in your new home. Your sales consultant will be happy to discuss the **Select** range of extras available.



| Kitchen  |   | 2 bedroom<br>The Elm<br>The Rose | 3 bedroom<br>The Cedar<br>The Ebony<br>The Hazel<br>The Cypress<br>The Spruce | 4 bedroom<br>The Juniper<br>The Chestnut<br>The Aspen<br>The Alder<br>The Maple | 5 bedroom<br>The Birch |
|--|---|----------------------------------|---|---|------------------------|
| Choice of standard fitted kitchen (doors and worktops)   |   | ■                                | ■   | ■   | ■                      |
| Choice of premium fitted kitchen (doors and worktops)  |   |                                  |   |   | ■                      |
| Stainless steel sink and drainer (single bowl) with chrome mixer tap   |   | ■                                | ■   |   |                        |
| Stainless steel sink and drainer (single and a half bowl) with chrome mixer tap**  |   |                                  | ■   | ■   | ■                      |
| Stainless steel sink and drainer (single bowl) with chrome mixer tap in utility  |   |                                  |   | ■   | ■                      |
| Indesit hob (60cm) with built-in single oven ( high level or under), with stainless glass splashback and curved glass chimney hood |   | ■                                | ■   | ■   | ■                      |
| Hotpoint hob (75 cm) with built-in double oven (high level or under), with stainless splashback and curved glass chimney hood      |   |                                  |   | ■   |                        |
| Bosch (75cm) hob with built-in double oven at high level, with stainless splashback and stainless steel pyramid chimney hood       |   |                                  |   |   | ■                      |
| Integrated (Indesit) 50/50 fridge-freezer  |   |                                  |   | ■   | ■                      |
| Fridge freezer space   | ■ | ■                                | ■   | ■   | ■                      |
| Integrated (Indesit) dishwasher  |   |                                  |   |   | ■                      |
| Space for integrated dishwasher  | ■ | ■                                | ■   | ■   |                        |
| Space for washing machine with plumbing and electrics in kitchen   | ■ | ■                                | ■   |   |                        |
| Space for washing machine with plumbing and electrics in utility   |   |                                  | ■   | ■   | ■                      |
| LED under-unit flexible strip lighting   |   |                                  |   |   | ■                      |
| Pendant fitting lighting to kitchen  | ■ | ■                                | ■   | ■   | ■                      |
| Bathrooms and en suite(s)  |   |                                  |   |   |                        |
| Ideal Standard Concept Air sanitaryware suite in white   | ■ | ■                                | ■   | ■   | ■                      |
| Ideal Standard close coupled WC to cloakroom   |   |                                  | ■   | ■   | ■                      |
| Ideal Standard shower tray with glass enclosure  |   |                                  | ■   | ■   | ■                      |
| Handheld hair wash attachment  | ■ | ■                                | ■   | ■   | ■                      |
| Porcelenosa wall tiling with splashback (half height over bath and full height to shower cubicle)                                  | ■ | ■                                | ■   | ■   | ■                      |
| Porcelanosa half height tiling on all walls holding sanitary ware  |   |                                  |   |   | ■                      |
| Shaver socket to bedroom 1 en suite  |   |                                  | ■   | ■   | ■                      |
| Chrome Bezel head LED lighting to bathroom, en suite and cloakroom   | ■ | ■                                | ■   | ■   | ■                      |
| Chrome towel warmer in bathroom and en suite   |   |                                  |   |   | ■                      |
| Bedrooms   |   |                                  |   |   |                        |
| Built-in wardrobe(s) to bedroom 1 (with shelf and rail)  |   |                                  |   | ■   | ■                      |

| Doors and Windows   |  | 2 bedroom<br>The Elm<br>The Rose | 3 bedroom<br>The Cedar<br>The Ebony<br>The Hazel<br>The Cypress<br>The Spruce | 4 bedroom<br>The Juniper<br>The Chestnut<br>The Aspen<br>The Alder<br>The Maple | 5 bedroom<br>The Birch |
|---|--|----------------------------------|---|---|------------------------|
| Front door with multi-point security locking system and security chain  |  | ■                                | ■   |   | ■                      |
| PVCu double glazing to windows  |  | ■                                | ■   | ■   | ■                      |
| Double glazed PVCu French doors   |  | ■                                | ■   |   |                        |
| Powder coated aluminium double glazed bi-fold doors   |  |                                  |   | ■   | ■                      |
| Cottage style internal doors  |  | ■                                | ■   | ■   | ■                      |
| Paving outside French / bi-fold door and path to garage personnel door (where applicable)                               |  | ■                                | ■   |   | ■                      |
| General   |  |                                  |   |   |                        |
| White painted walls and smooth white ceilings   |  | ■                                | ■   | ■   | ■                      |
| Combined USB/double sockets in kitchen and bedroom 1  |  | ■                                | ■   | ■   | ■                      |
| Multi-media point in living room  |  | ■                                | ■   | ■   | ■                      |
| TV point to cupboard/ living room and study (where applicable)  |  | ■                                | ■   | ■   | ■                      |
| Master telephone socket   |  | ■                                | ■   | ■   | ■                      |
| Gas central heating with wall mounted combi-boiler, programme selector and room thermostat(s)                           |  | ■                                | ■   | ■   |                        |
| Gas central heating with wall mounted boiler and separate hot water cylinder, programme selector and room thermostat(s) |  |                                  |   |   | ■                      |
| Thermostatic valves to all radiators (with the exception of rooms with separate thermostat control)                     |  | ■                                | ■   | ■   | ■                      |
| Front porch light included and wiring only for external rear lighting   |  | ■                                | ■   | ■   | ■                      |
| Mains wired smoke detectors with battery back-up  |  | ■                                | ■   | ■   | ■                      |
| Outside tap   |  | ■                                | ■   | ■   | ■                      |
| Power and lighting to garage (where applicable)   |  | ■                                | ■   | ■   | ■                      |
| Enclosed fenced rear garden, and garden gate (where applicable)   |  | ■                                | ■   | ■   | ■                      |
| Landscaped front gardens  |  | ■                                | ■   | ■   | ■                      |
| NHBC Buildmark cover  |  | ■                                | ■   | ■   | ■                      |
| First two years' customer service support from Bovis Homes  |  | ■                                | ■   | ■   | ■                      |

- Fitted as standard - included in the property
- \* Subject to stage of construction
- \*\* Single and a half bowl only available on premium upgraded worktops

Please note that plots 26 and 82 do not follow the standard specification seen here, please consult with our sales consultants on site to be given the alternative document and have your home's specification confirmed.

# So much choice...

Part of the excitement of buying a new home is the thrill of being the first person to live in the property and having a brand new contemporary kitchen and modern bathroom. Our premium brand partners ensure that all of our fixtures and fittings comply with the latest Government building regulations and only branded appliances are installed in your new home.

Once you know what specification comes included, you'll have a choice from our specially selected tiles for your kitchen and bathrooms, as well as kitchen worktops and cupboard doors. You can then use the Bovis Homes **Select** brochure to add the finishing touches to your home to make it extra special for you!

From personalising your bathrooms with stunning ceramics, or adding smooth sliding wardrobes to your master bedroom, there are a wide range of additional options and upgrades available.

The availability of items is subject to the stage of build, and can vary by development and house type. Our sales consultants will be happy to provide guidance.



Please ask your sales consultants for more information on your specification when purchasing a shared ownership or scheme property as this may differ from a traditional home.

The specification shown is correct at the time of production. Bovis Homes is continually reviewing and updating the specification on all house / apartment types and therefore reserves the right to change specification details. Photographs depict typical Bovis Homes interiors and may include optional upgrades. For full details regarding the current specification and finishes, please speak to our sales consultant.

Produced by the Vistry Group Design Studio.

When you have finished with this leaflet please recycle it.

NBNRED DS08533 / 01.24

