

**Aldreds**  
Estate Agents



8 Darnell Close

Bradwell, Great Yarmouth, NR31 9FS

Guide Price £335,000 - £355,000



## 8 Darnell Close

Bradwell, Great Yarmouth, NR31

\*\* GUIDE PRICE £335,000 - £355,000 \*\* With a large garage and a good sized rear garden Aldreds are delighted to offer this spacious modern three bedroom linked detached bungalow. The property has a large hall, lounge, kitchen/diner, master bedroom with ensuite, two further bedrooms, large family bathroom and cloakroom. Gas central heating and sealed unit double glazing. Gardens to front & rear and a good sized driveway.

### Entrance Hall

Two storage cupboards, inset ceiling lights, door to front.

### Cloakroom

Low level WC, hand basin, opaque double glazed window to front aspect, radiator.

### Lounge

14'9" x 13'7" (4.5 x 4.15)

Double glazed French doors to rear garden, radiator.

### Kitchen/Diner

14'7" x 10'7" (4.45 x 3.24)

Base & wall units with worktops, double glazed window to rear aspect, door to rear, wall mounted gas boiler, gas hob, electric oven, sink with drainer, inset ceiling lights, radiator.

### Master Bedroom

12'2" x 8'2" plus wardrobe space (3.73 x 2.5 plus wardrobe space)

Built in wardrobe, double glazed window to front aspect, radiator, door to

### Ensuite Shower Room

Shower in cubicle, hand basin, low level WC, opaque double glazed window to side aspect, radiator.

### Bedroom 2

12'1" x 9'0" (3.7 x 2.76)

Built in wardrobe, double glazed window to front aspect, radiator.

### Bedroom 3

7'11" x 7'8" (2.42 x 2.36)

Double glazed window to side aspect, radiator.





### Bathroom

8'0" x 5'0" (2.45 x 1.53)

Panel bath with shower over, hand basin, low level WC, opaque double glazed window to side aspect, heated towel rail.

### Outside

To the front of the property there is a driveway leading to garage, the garage has power & light and a door to the rear garden. Crushed slate front garden, To the rear there is a paved garden with beds and timber shed.

### Tenure

Freehold

### Services

Mains water, electricity, gas, drainage.

### Council Tax

Band D

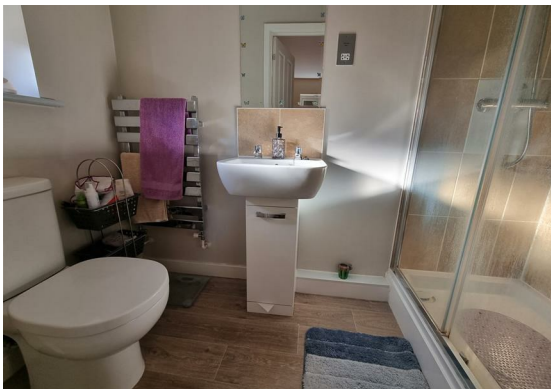
### Location

Bradwell is a popular residential area adjoining Gorleston 2 miles from Great Yarmouth Town centre \* There are a variety of local shops \* Schools \* Medical centre \* Regular bus services to the main shopping areas \* Indoor swimming pool and recreation areas.

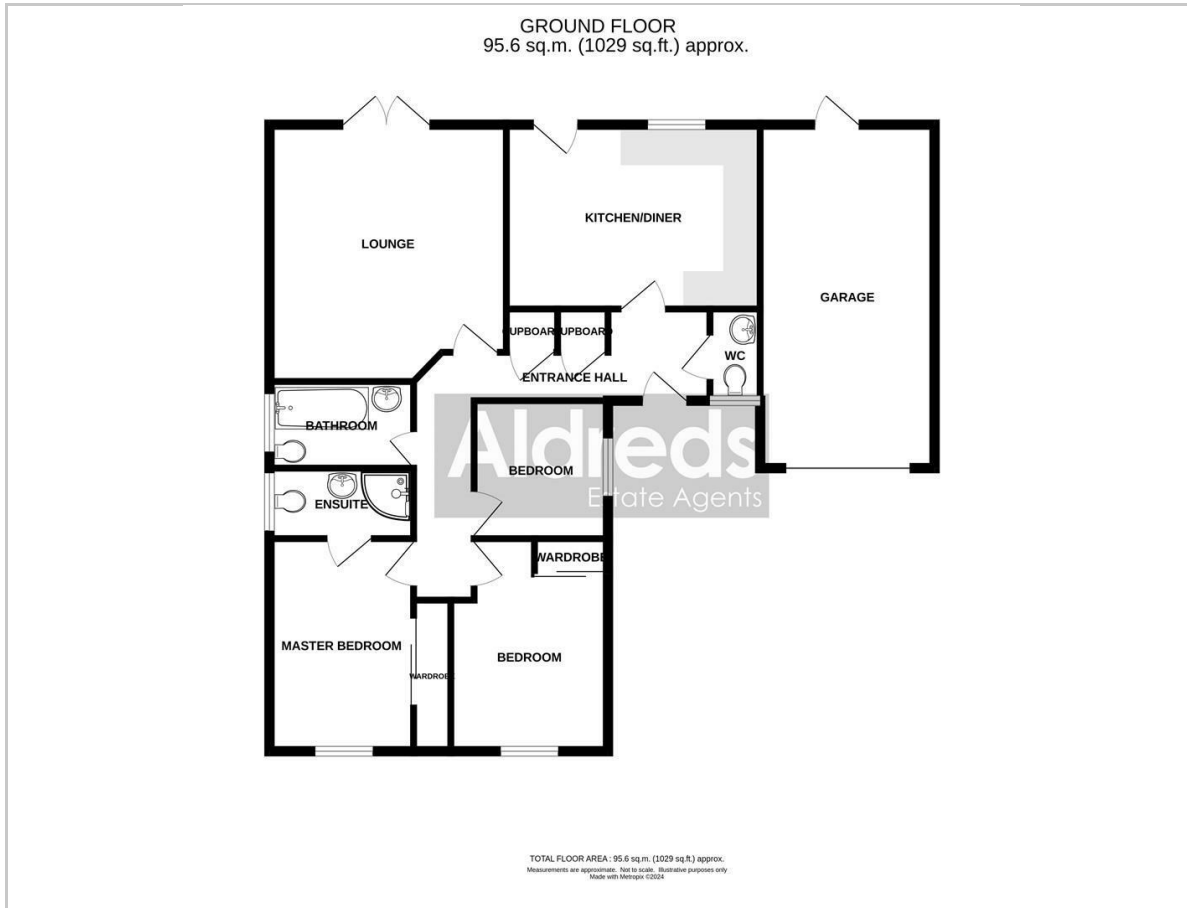
### Directions

From the Gorleston office head south along the High Street, turn right at the traffic lights in to Church Lane, continue over the roundabout and traffic lights in to Crab Lane, at the T junction turn left in to Beccles Road, continue over the traffic lights and up the hill, at the roundabout turn left, turn left in to Bluebell Meadow, at the T junction turn left, at the next T junction turn right in to Howards Way, continue round to the left in to Darnell Close.

Ref G17979/01/24



## Floor Plan



## Viewing

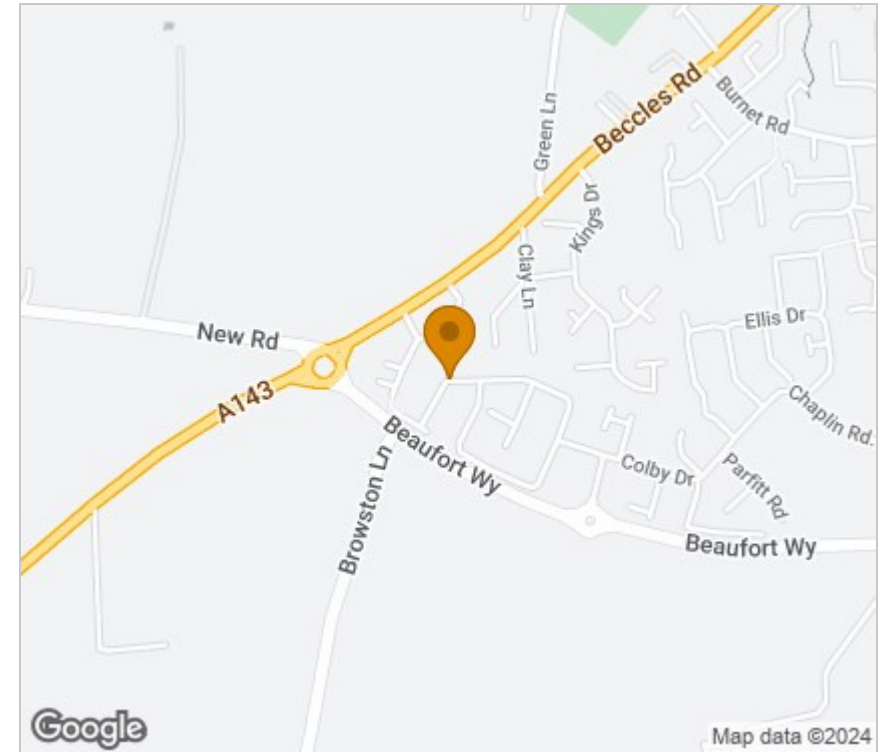
Please contact our Aldreds Gorleston Office on 01493 664600 if you wish to arrange a viewing appointment for this property or require further information.

### Disclaimer

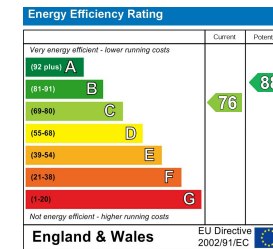
These particulars are issued on an understanding that all negotiations shall be conducted through Messrs. Aldreds. Please note: Messrs. Aldreds for themselves and for the vendors or lessors of this property whose agents they are given notice that: 1. Particulars are set out as a general outline only for guidance of intending purchasers or lessees, and do not constitute nor constitute part of, an offer or contract. 2. All descriptions, dimensions, references to condition and necessary permissions for use and occupation, and other details are given without responsibility and any intending purchasers or tenants should not rely on them as statements or representations of fact but must satisfy themselves by inspection or otherwise as to the correctness of each of them. 3. No person in the employment of Messrs. Aldreds has any authority to make or give any representation or warranty whatever in relation to this property. 4. If you are proposing to visit the property and are travelling some distance please check with Aldreds on the issue of availability prior to travelling. 5. Aldreds Property Consultants and associated services may offer additional services to the prospective purchaser for which they will be entitled to receive a commission.

Aldreds are pleased to be working with Mortgage Advice Bureau. They're an award-winning mortgage broker with over 1,400 advisers across the UK, and have access to over 12,000 mortgage products from over 90 lenders. Aldreds Estate Agents Ltd receive a commission of £200 on each completed case. Your home may be repossessed if you do not keep up repayments on your mortgage. There may be a fee for mortgage advice. The actual amount you pay will depend upon your circumstances. The fee is up to 1%, but a typical fee is 0.3% of the amount borrowed. Mortgage Advice Bureau is a trading name of Mortgage Seeker Limited which is an appointed representative of Mortgage Advice Bureau Limited and Mortgage Advice Bureau (Derby) Limited which are authorised and regulated by the Financial Conduct Authority. Mortgage Seeker Limited Registered Office: Lovewell Blake, Sixty Six North Quay, Great Yarmouth, Norfolk, NR30 1HE. Registered in England Number: 03721415. 6. Potential purchasers should check with their providers that the broadband and mobile phone coverage they would require is available.

## Area Map



## Energy Efficiency Graph



149 High Street, Gorleston, Norfolk, NR31 6RB  
Tel: 01493 664600 Email: gorleston@aldreds.co.uk <https://www.aldreds.co.uk/>

Registered in England Reg. No. 08945751 Registered Office: 66 North Quay, Great Yarmouth, Norfolk NR30 1HE Directors: Mark Duffield B.S.c. FRICS. Dan Crawley MNAEA Paul Lambert MNAEA