

**Aldreds**  
Estate Agents



92 High Street, Gorleston, Great Yarmouth, NR31 6RH

£225,000









£225,000

# 92 High Street

Gorleston, Great Yarmouth, NR31 6RH

- Office Building
- Numerous Offices
- Courtyard
- Two Cloakrooms
- High Street Location
- Ample Storage
- Kitchen
- Double Glazing

Currently occupied by a firm of solicitors and sitting on the bustling Gorleston High Street we offer this spacious and office building. Accommodation is split over two floors with numerous offices, a large reception, ample storage, large kitchen, strong room and two cloakrooms. The accommodation can be used flexibly allowing numerous uses. Gas central heating and double glazing. Sits in a conservation area. Courtyard



## Entrance Hall

Under stair cupboard, door to front, stairs to landing

## Front Office/Reception 31'9" x 14'5" max 9'2" min (9.69 x 4.4 max 2.8 min)

Two double glazed windows looking in to courtyard, double glazed window front aspect, stairs to landing, under stair cupboard

## Kitchen 14'7" x 9'0" (4.47 x 2.76)

Base & wall units with worktops, door to side, part tiled walls, tiled floor, wall mounted gas boiler, plumbing for dishwasher

## File Store 23'7" x 14'7" (7.21 x 4.47)

## Ground Floor Office 1 14'0" x 11'7" (4.28 x 3.55)

Storage cupboard, double glazed window to front aspect, radiator

## Ground Floor Office 2 10'0" x 9'10" (3.05 x 3)

Double glazed window to side aspect, radiator





## Directions

Sits on Gorleston High Street just to the north of the Aldreds office

**Strong Room 9'5" x 6'0" (2.89 x 1.85)**

Power & Light

**Cloakroom**

Low level WC, hand basin

**Landing**

**First Floor Office 1 13'10" x 11'6" (4.22 x 3.52)**

Double glazed window to front aspect, radiator

**First Floor Office 2 15'1" x 13'2" (4.62 x 4.03)**

Double glazed window to front aspect, radiator

**First Floor Office 3 14'7" x 11'8" (4.47 x 3.57)**

Access to fire escape, radiator

**First Floor Office 4 9'10", 14'0" x 9'3" plus recess (3.43 x 2.82 plus recess)**

Double glazed window to side aspect, radiator

**First Floor Office 5 11'2" x 11'2" (3.42 x 3.42)**

Double glazed window to rear aspect, radiator

**First Floor Office 6 12'9" x 9'11" (3.89 x 3.03)**

Access to fire escape, radiator





### First Floor Office 7 10'7" x 8'10" (3.25 x 2.71)

Double glazed window to side aspect, radiator

### Rear Landing

### Store 1 6'8" x 5'8" (2.05 x 1.74)

Double glazed window to front aspect

### Store 2 5'10" max x 5'2" max (1.8 max x 1.6 max)

Double glazed window to rear aspect

### Cloakroom

Low level WC, hand basin

### Outside

The property has a courtyard with boiler cupboard housing the wall mounted gas boiler

### Tenure

Freehold

### Services

Mains water, electricity, gas, drainage

### Business Rates

Rateable value for 25-26 £15,250

### Location

Gorleston on Sea is a coastal town 2 miles from Great Yarmouth centre and has a varied selection of local shops \* Golf Course \* Modern District hospital \* Schools for all ages \* Library \* Regular bus services to the main shopping areas and a sandy beach.

### Directions

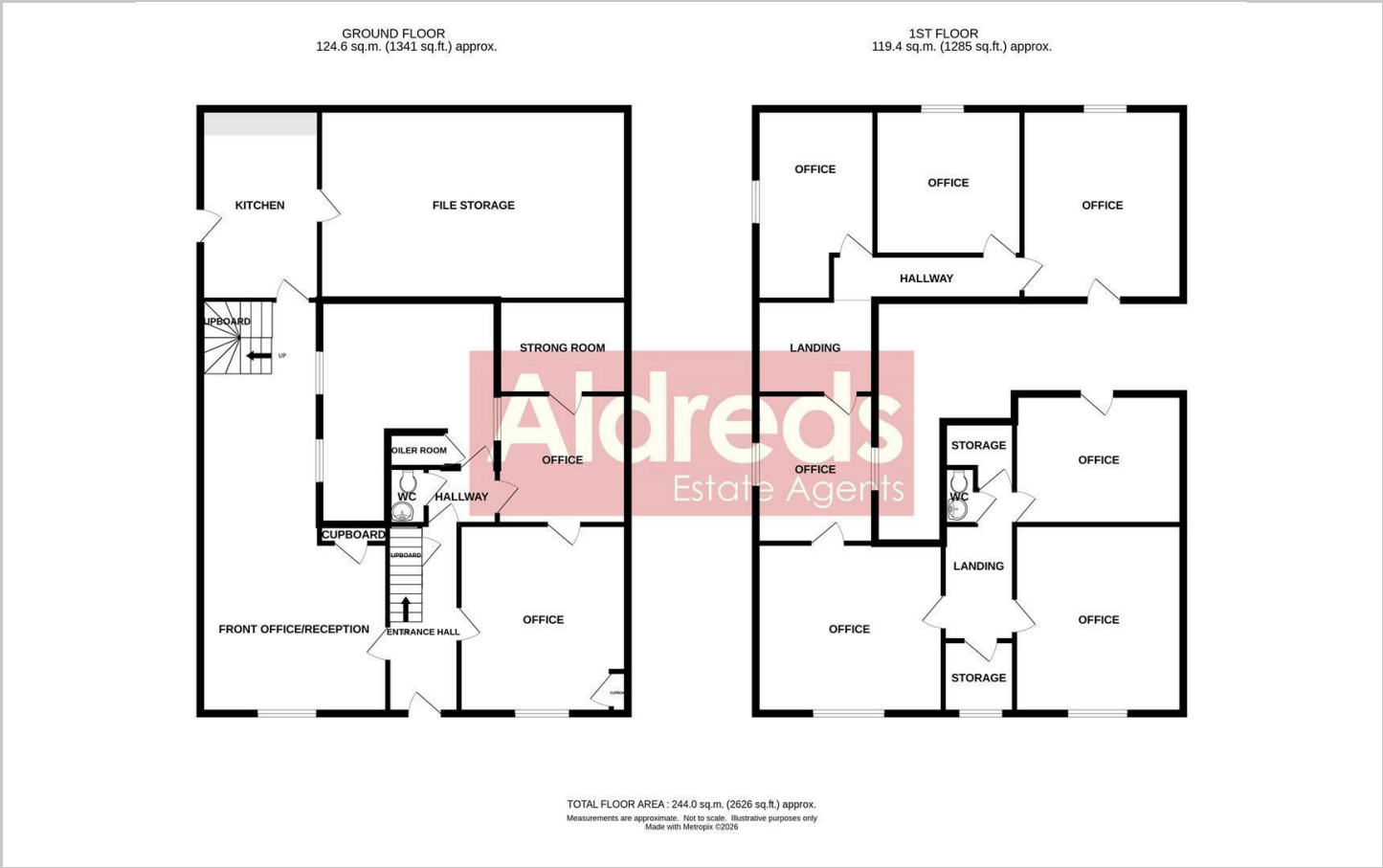
Sits on Gorleston High Street just to the north of the Aldreds office

### Ref G18436/01/26

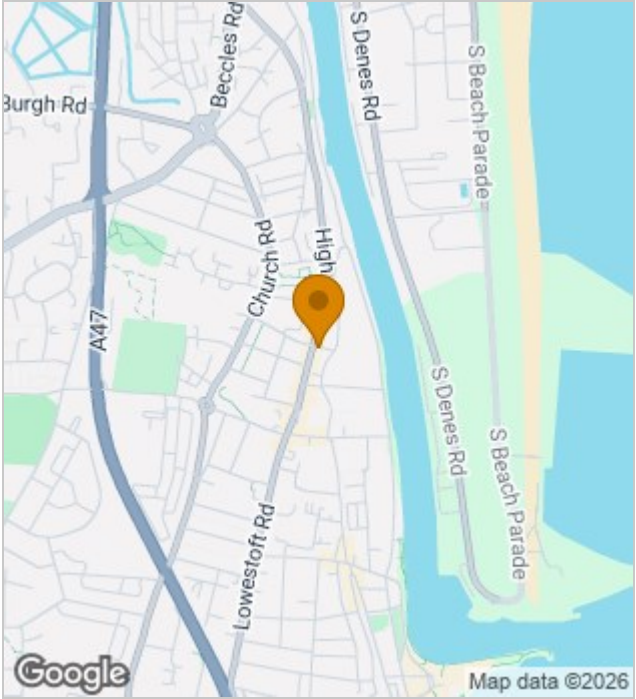
### Commercial EPC

TBC

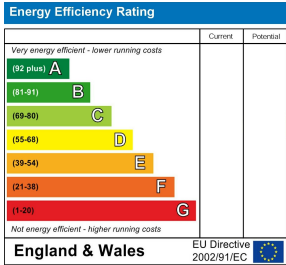
Floor Plans



Location Map



Energy Performance Graph



Viewing

Please contact our Aldreds Gorleston Office on 01493 664600 if you wish to arrange a viewing appointment for this property or require further information.

Disclaimer  
These particulars are issued on an understanding that all negotiations shall be conducted through Messrs. Aldreds. Please note: Messrs. Aldreds for themselves and for the vendors or lessors of this property whose agents they are given notice that: 1. Particulars are set out as a general outline only for guidance of intending purchasers or lessees, and do not constitute nor constitute part of, an offer or contract. 2. All descriptions, dimensions, references to condition and necessary permissions for use and occupation, and other details are given without responsibility and any intending purchasers or tenants should not rely on them as statements or representations of fact but must satisfy themselves by inspection or otherwise as to the correctness of each of them. 3. No person in the employment of Messrs. Aldreds has any authority to make or give any representation or warranty whatever in relation to this property. 4. If you are proposing to visit the property and are travelling some distance please check with Aldreds on the issue of availability prior to travelling. 5. Aldreds Property Consultants and associated services may offer additional services to the prospective purchaser for which they will be entitled to receive a commission. Aldreds are pleased to be working with Mortgage Advice Bureau. They're an award-winning mortgage broker with over 1,400 advisers across the UK, and have access to over 12,000 mortgage products from over 90 lenders. Aldreds Estate Agents Ltd receive a commission of £200 on each completed case. Your home may be repossessed if you do not keep up repayments on your mortgage. There may be a fee for mortgage advice. The actual amount you pay will depend upon your circumstances. The fee is up to 1%, but a typical fee is 0.3% of the amount borrowed. Mortgage Advice Bureau is a trading name of Mortgage Seeker Limited which is an appointed representative of Mortgage Advice Bureau Limited and Mortgage Advice Bureau (Derby) Limited which are authorised and regulated by the Financial Conduct Authority. Mortgage Seeker Limited Registered Office: Lovewell Blake, Sixty Six North Quay, Great Yarmouth, Norfolk, NR30 1HE. Registered in England Number: 03721415. 6. Potential purchasers should check with their providers that the broadband and mobile phone coverage they would require is available.