

A photograph of a red brick terraced house. The house has a white front door with a small arched window and a brass handle. To the left of the door is a large window. A black metal railing leads up to the door. To the right of the door is a small window with a white frame. A black downspout is visible on the wall. A red banner is in the top right corner with the text 'Aldreds Estate Agents'.

Aldreds
Estate Agents

75 Avondale Road

Gorleston, Great Yarmouth, NR31 6DJ

Offers Over £105,000



75 Avondale Road

Gorleston, Great Yarmouth,

This charming one-bedroom ground-floor apartment offers a fantastic opportunity for coastal living. With its own private front door, the property boasts a modern interior complemented by gas central heating for year-round comfort. Residents can enjoy access to a communal rear garden, perfect for relaxing outdoors, as well as a private storage shed for added convenience. Located just a stone's throw from the beach, this home is ideally positioned for those who love seaside walks and fresh coastal air.

Lounge

12'1" x 8'10" (3.7m x 2.7m)

Laminate floor, upvc double glazed window to side aspect, upvc double glazed door to side aspect. Access to hallway.

Hallway

Laminate floor, access to kitchen and bedroom.

Bathroom

8'6" x 4'3" (2.6m x 1.3m)

Laminate floor, WC, basin, shower cubicle with wall mounted shower, partially tiled walls, heated towel rail.

Kitchen

5'10" x 9'10" (1.8m x 3.0)

Laminate floor, laminate worktops, space for fridge freezer, wall mounted and under counter cupboards, radiator, boiler cupboard with combi boiler, built in sink and draining board, cooker and gas hob with partially tiled splashback. Space for washing machine.

Bedroom

9'2" x 13'9" (max) (2.8m x 4.2m (max))

Carpet floor, upvc double glazed window to side aspect, radiator, built in cupboard.





Outside Front

Communal garden with path to front door of main block, access through communal lobby, past stairwell to rear outside area.

Outside Rear

Concrete path to side door, communal lawned garden and storage shed. Access to rear exit.

Location

Gorleston on Sea is a coastal town 2 miles from Great Yarmouth centre and has a varied selection of local shops * Golf Course * Modern District hospital * Schools for all ages * Library * Regular bus services to the main shopping areas and a sandy beach.

Directions

From the Gorleston office head south along the High Street, continue over the traffic lights into Lowestoft Road, continue up the hill, turn left into Avondale Road where the property can be found on the left hand side.

Council Tax

Great Yarmouth Borough Council - Band A

Tenure

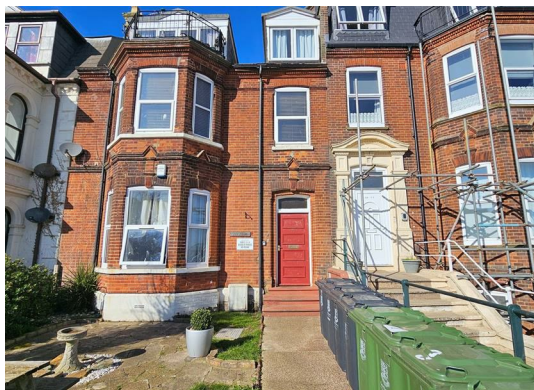
Leasehold - 999 Year lease from 1 August 1988 - Service charge and ground rent paid together: £1098.86 per annum - Paid May to May.

Services

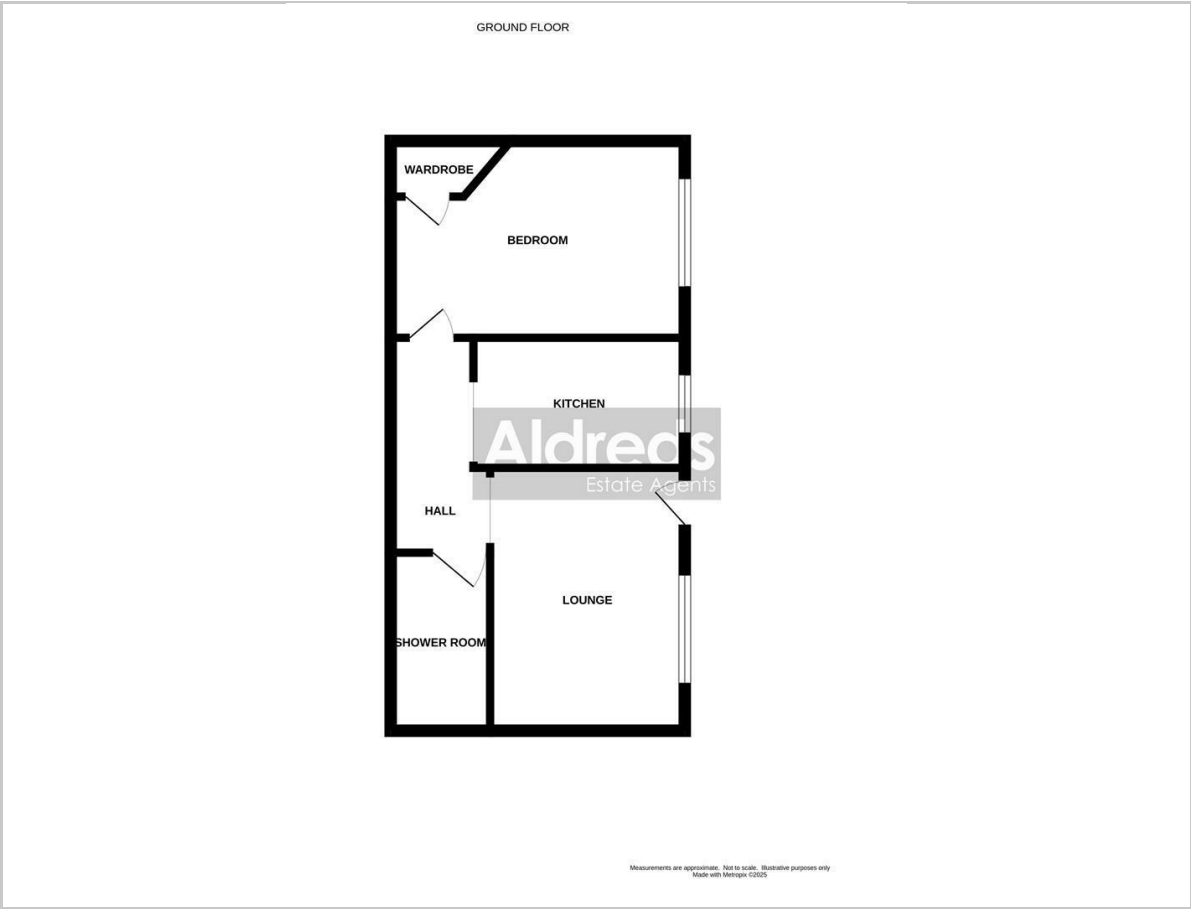
Mains gas, water, electric, drainage.

Ref

G18250/03/25



Floor Plan



Viewing

Please contact our Aldreds Gorleston Office on 01493 664600 if you wish to arrange a viewing appointment for this property or require further information.

Disclaimer

These particulars are issued on an understanding that all negotiations shall be conducted through Messrs. Aldreds. Please note: Messrs. Aldreds for themselves and for the vendors or lessors of this property whose agents they are given notice that: 1. Particulars are set out as a general outline only for guidance of intending purchasers or lessees, and do not constitute nor constitute part of, an offer or contract. 2. All descriptions, dimensions, references to condition and necessary permissions for use and occupation, and other details are given without responsibility and any intending purchasers or tenants should not rely on them as statements or representations of fact but must satisfy themselves by inspection or otherwise as to the correctness of each of them. 3. No person in the employment of Messrs. Aldreds has any authority to make or give any representation or warranty whatever in relation to this property. 4. If you are proposing to visit the property and are travelling some distance please check with Aldreds on the issue of availability prior to travelling. 5. Aldreds Property Consultants and associated services may offer additional services to the prospective purchaser for which they will be entitled to receive a commission.

Aldreds are pleased to be working with Mortgage Advice Bureau. They're an award-winning mortgage broker with over 1,400 advisers across the UK, and have access to over 12,000 mortgage products from over 90 lenders. Aldreds Estate Agents Ltd receive a commission of £200 on each completed case. Your home may be repossessed if you do not keep up repayments on your mortgage. There may be a fee for mortgage advice. The actual amount you pay will depend upon your circumstances. The fee is up to 1%, but a typical fee is 0.3% of the amount borrowed. Mortgage Advice Bureau is a trading name of Mortgage Seeker Limited which is an appointed representative of Mortgage Advice Bureau Limited and Mortgage Advice Bureau (Derby) Limited which are authorised and regulated by the Financial Conduct Authority. Mortgage Seeker Limited Registered Office: Lovewell Blake, Sixty Six North Quay, Great Yarmouth, Norfolk, NR30 1HE. Registered in England Number: 03721415. 6. Potential purchasers should check with their providers that the broadband and mobile phone coverage they would require is available.

Area Map



Energy Efficiency Graph

