

Aldreds
Estate Agents

27 Back Chapel Lane

Gorleston, Great Yarmouth, NR31 6NY

Offers In Excess Of £185,000



27 Back Chapel Lane

Gorleston, Great Yarmouth, NR31 6NY

A well presented modern three storey, three bedroom house with garage and parking space. The property also has a rear garden. Offered with no chain. On the ground floor there is an entrance hall, ground floor bedroom three and a cloakroom. The first floor has a landing, lounge and a kitchen/diner. On the second floor there is a landing, master bedroom with ensuite, bedroom two and a bathroom.

Entrance Hall

Stairs to landing, door to front, radiator.

Bedroom 3

13'0" x 9'2" (3.98 x 2.8)

Double glazed French doors to rear garden, double glazed window to rear aspect, radiator.

Cloakroom

Low level WC, hand basin

First Floor Landing

Lounge

14'1" x 13'0" (4.3 x 3.97)

Two double glazed windows to front aspect, radiator.

Kitchen/Diner

Base & wall units with worktops, two double glazed window to rear aspect, wall mounted gas boiler, electric hob, electric oven, sink with drainer, plumbing for washing machine, radiator.

Second Floor Landing

Radiator

Master Bedroom

11'4" x 9'4" (3.46 x 2.87)

Storage cupboard, Velux window, radiator, door to





Ensuite

Shower in cubicle, low level WC, hand basin

Bedroom 2

12'5" x 7'1" (3.8 x 2.17)

Velux window, radiator

Bathroom

8'2" x 5'5" (2.5 x 1.66)

Panel bath, hand basin, low level WC, Velux window, radiator

Outside

Allocated parking space, integral garage with up & over door. Paved rear garden

Tenure

Freehold

Services

Mains water electricity, gas, drainage

Council Tax

Band B

EPC

C Rating - 76

Location

Gorleston-on-Sea is a coastal town 2 miles from Great Yarmouth centre and has a varied selection of local shops * Golf Course * Modern District hospital * Schools for all ages * Library * Regular bus services to the main shopping areas and a fantastic sandy beach.

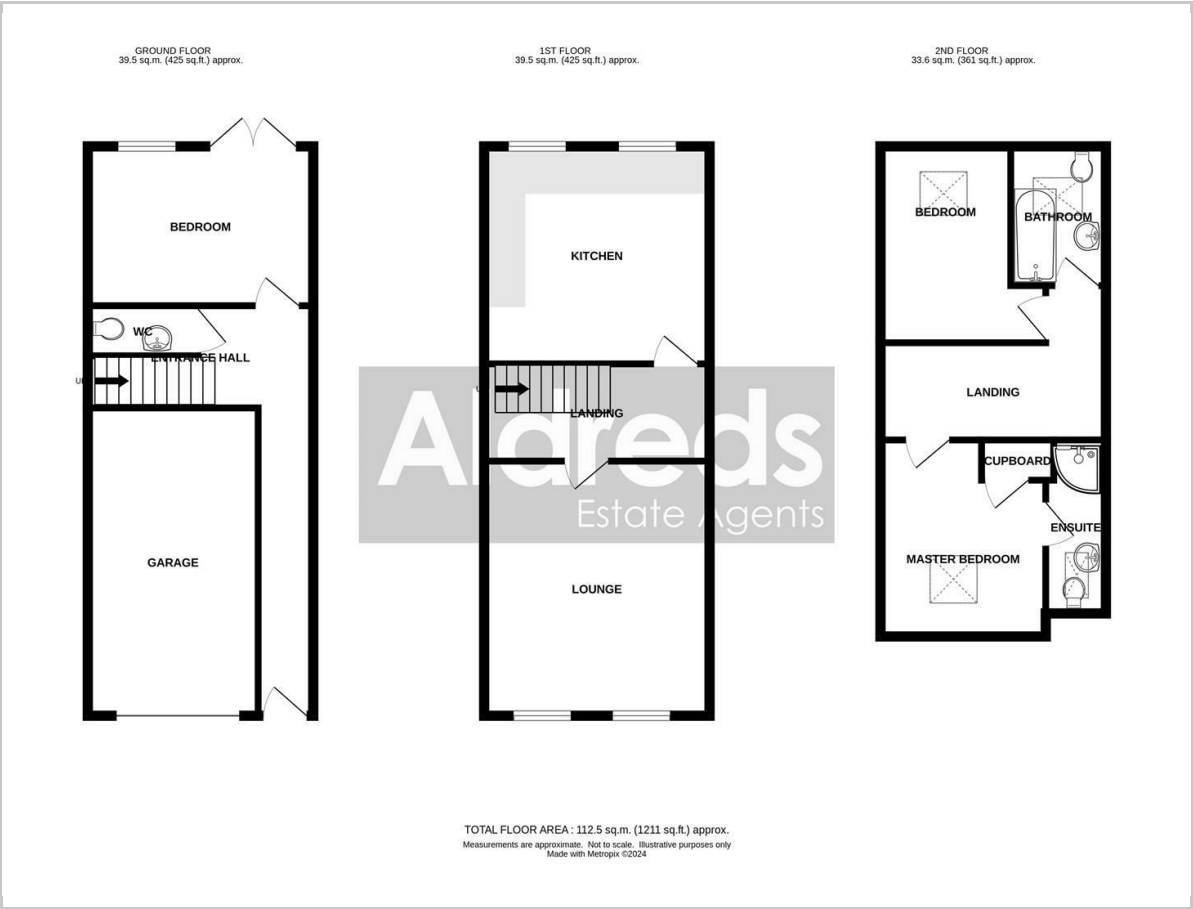
Directions

Head north along the High Street, turn left in to Trafalgar Road East, turn right in to Back Chapel Lane

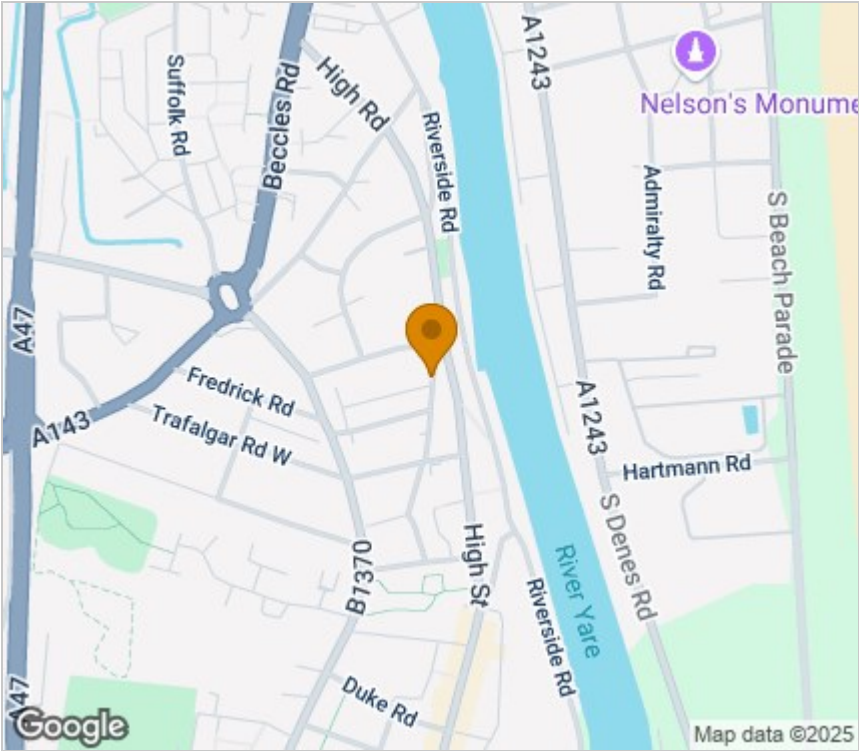
Ref G18204/12/24



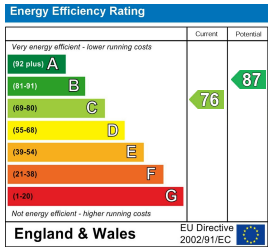
Floor Plan



Area Map



Energy Efficiency Graph



Viewing

Please contact our Aldreds Gorleston Office on 01493 664600 if you wish to arrange a viewing appointment for this property or require further information.

Disclaimer
These particulars are issued on an understanding that all negotiations shall be conducted through Messrs. Aldreds. Please note: Messrs. Aldreds for themselves and for the vendors or lessors of this property whose agents they are given notice that: 1. Particulars are set out as a general outline only for guidance of intending purchasers or lessees, and do not constitute nor constitute part of, an offer or contract. 2. All descriptions, dimensions, references to condition and necessary permissions for use and occupation, and other details are given without responsibility and any intending purchasers or tenants should not rely on them as statements or representations of fact but must satisfy themselves by inspection or otherwise as to the correctness of each of them. 3. No person in the employment of Messrs. Aldreds has any authority to make or give any representation or warranty whatever in relation to this property. 4. If you are proposing to visit the property and are travelling some distance please check with Aldreds on the issue of availability prior to travelling. 5. Aldreds Property Consultants and associated services may offer additional services to the prospective purchaser for which they will be entitled to receive a commission. Aldreds are pleased to be working with Mortgage Advice Bureau. They're an award-winning mortgage broker with over 1,400 advisers across the UK, and have access to over 12,000 mortgage products from over 90 lenders. Aldreds Estate Agents Ltd receive a commission of £200 on each completed case. Your home may be repossessed if you do not keep up repayments on your mortgage. There may be a fee for mortgage advice. The actual amount you pay will depend upon your circumstances. The fee is up to 1%, but a typical fee is 0.3% of the amount borrowed. Mortgage Advice Bureau is a trading name of Mortgage Seeker Limited which is an appointed representative of Mortgage Advice Bureau Limited and Mortgage Advice Bureau (Derby) Limited which are authorised and regulated by the Financial Conduct Authority. Mortgage Seeker Limited Registered Office: Lovewell Blake, Sixty Six North Quay, Great Yarmouth, Norfolk, NR30 1HE. Registered in England Number: 03721415. 6. Potential purchasers should check with their providers that the broadband and mobile phone coverage they would require is available.