



Aldreds

Lettings

56 Reeve Street, Lowestoft, NR32 1UF

£775 PCM





56 Reeve Street

, Lowestoft, NR32 1UF

- Two Double Bedrooms
- Gas Central Heating
- Courtyard Garden
- Two Reception Rooms
- Double Glazing
- Parking

Aldreds Lettings are delighted to offer this very well presented two double bedroom Victorian house situated in this no through road close to local shops and within easy reach of the town centre. The accommodation comprises of a large living room, separate dining room, modern kitchen, two double bedrooms, bathroom with shower over the bath, courtyard garden, on street parking, gas central heating, double glazing, EPC rating D, Council Tax Band A, UNFURNISHED



Living Room 11'9" x 9'10" (3.6 x 3)

Large living room with front aspect window, feature electric fire, built in storage, BT point, radiator.

Dining Room 12'1" x 9'10" (3.7 x 3)

Separate dining room, feature fireplace recess, built in storage, rear aspect window, radiator.

Kitchen 9'10" x 5'2" (3 x 1.6)

Modern kitchen with ample storage and work surface. Appliances include gas cooker. Space and plumbing for additional appliances. Tiled floor, door to garden.

Bedroom 1 11'9" x 9'10" (3.6 x 3)

Double bedroom, front aspect window, built in cupboard, radiator.

Bedroom 2 12'1" x 9'10" (3.7 x 3)

Second double bedroom, rear aspect window over looking the courtyard. Built in and fitted storage, radiator.



Directions

Bathroom

Modern white suite comprising bath with shower over, WC and wash basin. Extensively tiled walls, frosted window, radiator.

Outside

Fully enclosed private rear courtyard. Hard landscaped for easy maintenance.

Parking

On street parking.

Additional Information

RENT

Rent is exclusive of Council Tax, water rates, sewerage rates. The rent is payable monthly in advance.

TENANCY

6 Months Assured Shorthold.

TERMS

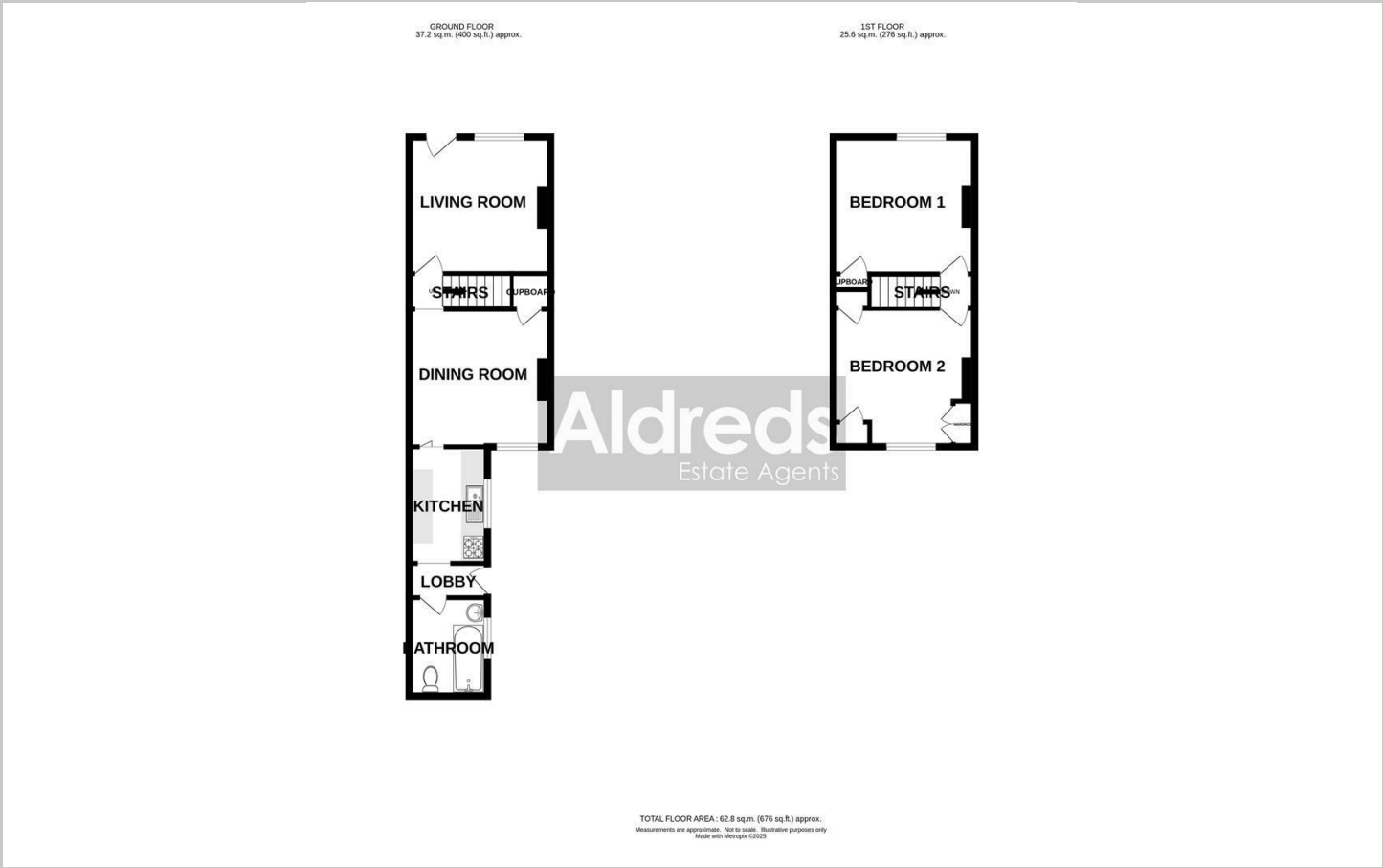
NO SMOKING

ADDITIONAL INFO



All applications for tenancy to be on a form which can be obtained from this office. A non-refundable holding deposit equivalent to one week's rent will be required. This will be transferred towards the first month's rent on commencement of the tenancy. The rent is payable monthly in advance and a Dilapidations deposit equivalent to 5 weeks' rent will also be required when agreements are signed. The Dilapidations Deposit is returnable after completion of a satisfactory tenancy. The aforementioned charges would be payable by bankers draft, a cheque drawn on a Building Society account, cash or Debit Card. NOT A PERSONAL CHEQUE.

Floor Plans



Viewing

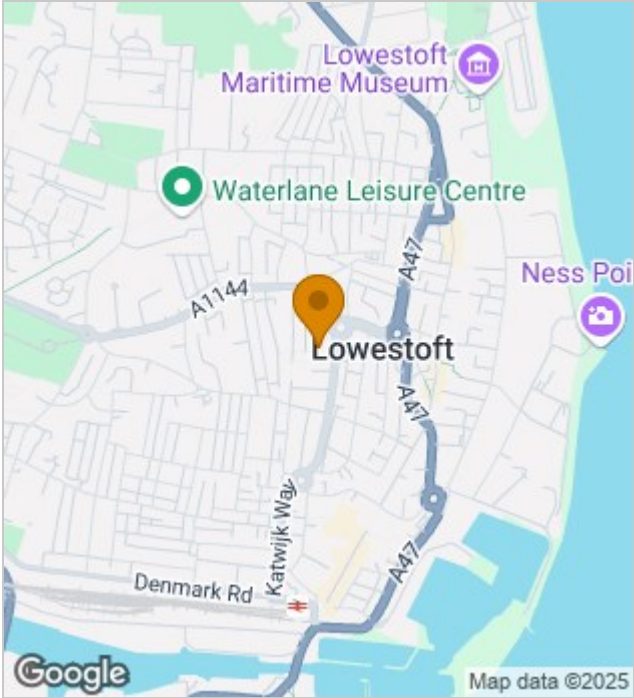
Please contact our Aldreds Lettings Office on 01493 849111 if you wish to arrange a viewing appointment for this property or require further information.

Disclaimer

These particulars are issued on an understanding that all negotiations shall be conducted through Messrs. Aldreds. Please note: Messrs. Aldreds for themselves and for the vendors or lessors of this property whose agents they are given notice that: 1. Particulars are set out as a general outline only for guidance of intending purchasers or lessees, and do not constitute nor constitute part of, an offer or contract. 2. All descriptions, dimensions, references to condition and necessary permissions for use and occupation, and other details are given without responsibility and any intending purchasers or tenants should not rely on them as statements or representations of fact but must satisfy themselves by inspection or otherwise as to the correctness of each of them. 3. No person in the employment of Messrs. Aldreds has any authority to make or give any representation or warranty whatever in relation to this property. 4. If you are proposing to visit the property and are travelling some distance please check with Aldreds on the issue of availability prior to travelling. 5. Aldreds Property Consultants and associated services may offer additional services to the prospective purchaser for which they will be entitled to receive a commission.

Aldreds are pleased to be working with Mortgage Advice Bureau. They're an award-winning mortgage broker with over 1,400 advisers across the UK, and have access to over 12,000 mortgage products from over 90 lenders. Aldreds Estate Agents Ltd receive a commission of £200 on each completed case. Your home may be repossessed if you do not keep up repayments on your mortgage. There may be a fee for mortgage advice. The fee is up to 1%, but a typical fee is 0.3% of the amount borrowed. Mortgage Advice Bureau is a trading name of Mortgage Seeker Limited which is an appointed representative of Mortgage Advice Bureau Limited and Mortgage Advice Bureau (Derby) Limited which are authorised and regulated by the Financial Conduct Authority. Mortgage Seeker Limited Registered Office: Lovewell Blake, Sixty Six North Quay, Great Yarmouth, Norfolk, NR30 1HE. Registered in England Number: 03721415. 6. Potential purchasers should check with their providers that the broadband and mobile phone coverage they would require is available.

Location Map



Energy Performance Graph

