

# Aldreds

Lettings



130 High Street, Lowestoft, Suffolk, NR32 1HP

£475 PCM







£475 PCM

# 130 High Street

Lowestoft, Suffolk, NR32 1HP

- First Floor Apartment
- Separate Kitchen
- Central Location
- Double bedroom
- Electric Heating
- High Ceilings

Aldreds Lettings are pleased to offer this spacious, newly decorated one bedroom first floor apartment situated close to the Town centre. The accommodation comprises of a secure communal entrance lobby, private entrance hall, large living room, separate modern kitchen (no appliances provided), double bedroom, shower room, modern electric heating, Council Tax Band A, UNFURNISHED  
Water & sewerage rates included in the rent.



## Entrance Hall

Secure communal entrance. Private entrance hall with doors to all rooms, heater and entry-phone.

## Living Room 13'1" x 9'2" (4 x 2.8)

Large living room with rear aspect window, high ceilings, TV point, heater.

## Kitchen 9'10" x 8'2" (3.0 x 2.5)

Separate kitchen with ample storage and work surface. Space and plumbing for appliances, rear aspect window.

## Bedroom 10'9" x 8'6" (3.3 x 2.6)

Double bedroom, rear aspect window, built in cupboard, heater.

## Shower Room

Modern suite comprising shower cubicle with electric shower, WC and wash basin. Heater.

## Parking

PLEASE NOTE: No parking is included with the property.

## Additional Information







#### RENT

Rent is exclusive of Council Tax. Water & sewerage rates included in the rent. The rent is payable monthly in advance.

#### TENANCY

6 Months Assured Shorthold.

#### TERMS

NO SMOKING

#### ADDITIONAL INFO

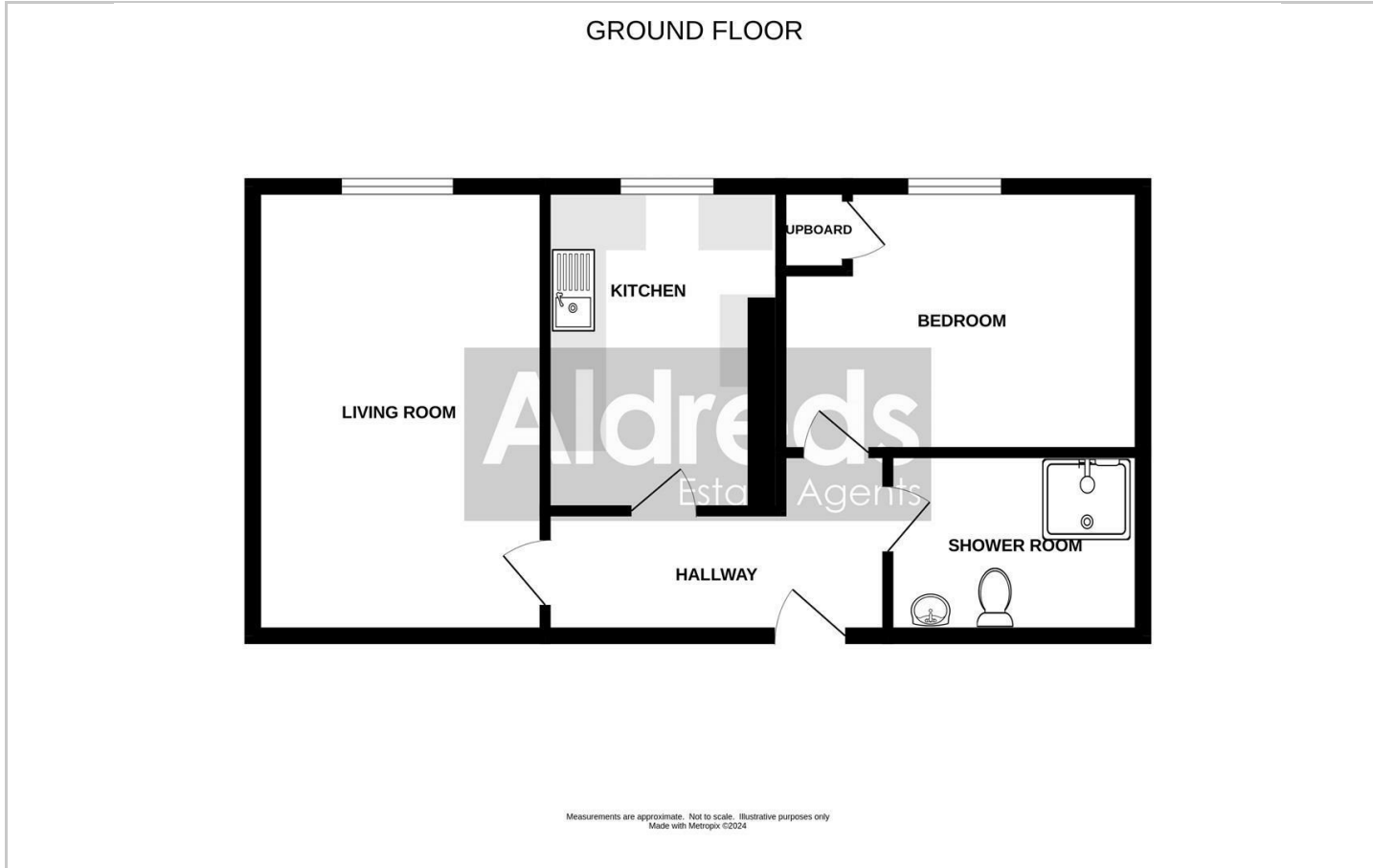
All applications for tenancy to be on a form which can be obtained from this office. A non-refundable holding deposit equivalent to one week's rent will be required. This will be transferred towards the first month's rent on commencement of the tenancy. The rent is payable monthly in advance and a Dilapidations deposit equivalent to 5 weeks' rent will also be required when agreements are signed. The Dilapidations Deposit is returnable after completion of a satisfactory tenancy. The aforementioned charges would be payable by bankers draft, a cheque drawn on a Building Society account, cash or Debit Card. NOT A PERSONAL CHEQUE.

Directions

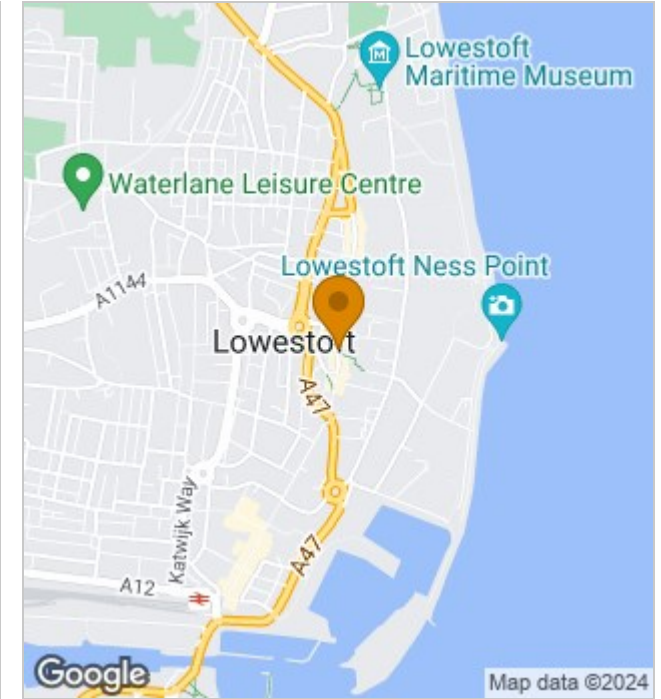




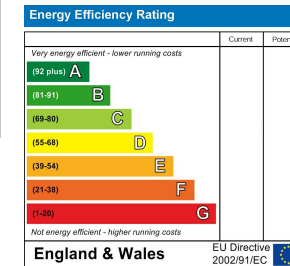
## Floor Plans



## Location Map



## Energy Performance Graph



## Viewing

Please contact our Aldreds Lettings Office on 01493 849111 if you wish to arrange a viewing appointment for this property or require further information.

### Disclaimer

These particulars are issued on an understanding that all negotiations shall be conducted through Messrs. Aldreds. Please note: Messrs. Aldreds for themselves and for the vendors or lessors of this property whose agents they are given notice that: 1. Particulars are set out as a general outline only for guidance of intending purchasers or lessees, and do not constitute nor constitute part of, an offer or contract. 2. All descriptions, dimensions, references to condition and necessary permissions for use and occupation, and other details are given without responsibility and any intending purchasers or tenants should not rely on them as statements or representations of fact but must satisfy themselves by inspection or otherwise as to the correctness of each of them. 3. No person in the employment of Messrs. Aldreds has any authority to make or give any representation or warranty whatever in relation to this property. 4. If you are proposing to visit the property and are travelling some distance please check with Aldreds on the issue of availability prior to travelling. 5. Aldreds Property Consultants and associated services may offer additional services to the prospective purchaser for which they will be entitled to receive a commission. Aldreds are pleased to be working with Mortgage Advice Bureau. They're an award-winning mortgage broker with over 1,400 advisers across the UK, and have access to over 12,000 mortgage products from over 90 lenders. Aldreds Estate Agents Ltd receive a commission of £200 on each completed case. Your home may be repossessed if you do not keep up repayments on your mortgage. There may be a fee for mortgage advice. The actual amount you pay will depend upon your circumstances. The fee is up to 1%, but a typical fee is 0.3% of the amount borrowed. Mortgage Advice Bureau is a trading name of Mortgage Seeker Limited which is an appointed representative of Mortgage Advice Bureau Limited and Mortgage Advice Bureau (Derby) Limited which are authorised and regulated by the Financial Conduct Authority. Mortgage Seeker Limited Registered Office: Lovewell Blake, Sixty Six North Quay, Great Yarmouth, Norfolk, NR30 1HE. Registered in England Number: 03721415. 6. Potential purchasers should check with their providers that the broadband and mobile phone coverage they would require is available.

17 Hall Quay, Great Yarmouth, Norfolk, NR30 1HJ  
Tel: 01493 849111 Email: [lettings@aldreds.co.uk](mailto:lettings@aldreds.co.uk) <https://www.aldreds.co.uk/>

Registered in England Reg. No. 08945751 Registered Office: 66 North Quay, Great Yarmouth, Norfolk NR30 1HE Directors: Mark Duffield B.S.c. FRICS. Dan Crawley MNAEA Paul Lambert MNAEA