

Aldreds
Estate Agents

63 Toning Street

North Lowestoft, Lowestoft, NR32 2AN

£115,000



63 Toning Street

North Lowestoft, Lowestoft,

Aldreds are pleased to offer this 3 storey townhouse situated in Central Lowestoft within walking distance of all local amenities and Lowestoft Beaches. This superb family home offers generous living accommodation over three floors including a spacious lounge/diner and 3 separate bedrooms. The property would benefit from re-decoration/updating and offers outstanding value for money.

Lounge/Diner

11'11" x 24'4" (3.63 x 7.42)

Laminate Flooring, Coved Ceiling, Upvc Window, Brick Fireplace, Power points, T.V Point, Radiator, Stairs off to the First Floor.

Kitchen

13'7" x 5'3" (4.14 x 1.60)

Ceramic Tiled Flooring. Range of Fitted Kitchen Units, Extended Work Surfaces, Stainless steel sink with single drainer, Tiled Splash backs, Recess for white goods including cupboard for washing machine, Wall mounted combination boiler, Power Points.

Ground Floor Toilet

Ceramic tiled flooring & Low level W.C.

Central Landing

Fitted carpet, 3 Separate bedrooms leading off with galleried staircase off to the 2nd floor.

Bedroom 1

12'11" x 11'10" (3.94 x 3.61)

Fitted carpet, Upvc window, Power Points, Radiator.

Bedroom 2

7'4" x 12'4" (2.24 x 3.76)

Fitted carpet, Radiator, Upvc window, Power Points, Door to:-





Family Bathroom

12'9" x 5'7" (3.89 x 1.70)

Ceramic tiled flooring, Bathroom suite comprising of a panel bath, Low level W.C, Pedestal sink, Separate fully tiled shower cubicle, Upvc Window, Radiator, Tiled Splash backs.

Bedroom 3

8'6" x 14'1" (2.59 x 4.29 (2.58 x 4.28 Max))

Fitted carpet, Radiator, Power Points, Upvc Window.

Outside

Outside to the the front there is an enclosed front garden with a footpath to front door. Outside to the rear there is a enclosed courtyard garden laid to patio stone. Providing ample space for outside dining furniture enclosed by modern high fencing with pedestrian rear access.

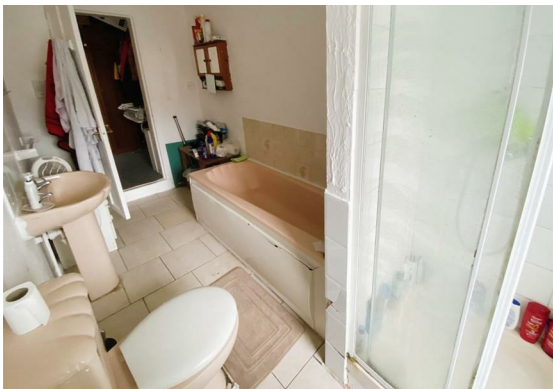
Services

Freehold

Council Tax Band A

Mains Water And Drainage

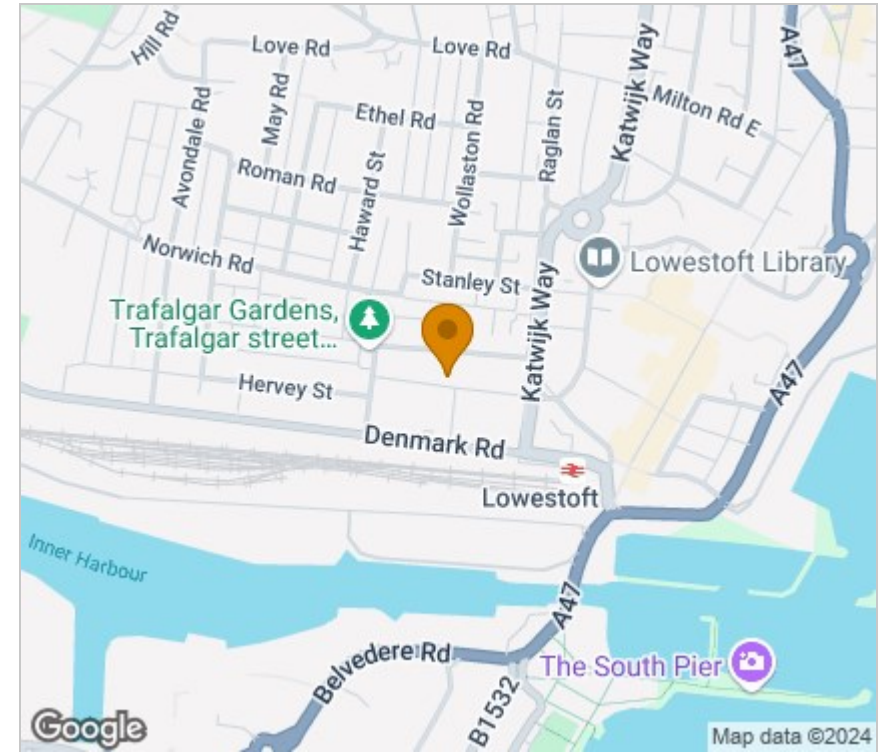
Mains Electricity And Gas



Floor Plan



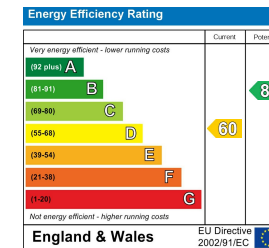
Area Map



Viewing

Please contact our Aldreds Lowestoft Office on 01502 565432 if you wish to arrange a viewing appointment for this property or require further information.

Energy Efficiency Graph



Disclaimer

These particulars are issued on an understanding that all negotiations shall be conducted through Messrs. Aldreds. Please note: Messrs. Aldreds for themselves and for the vendors or lessors of this property whose agents they are given notice that: 1. Particulars are set out as a general outline only for guidance of intending purchasers or lessees, and do not constitute nor constitute part of, an offer or contract. 2. All descriptions, dimensions, references to condition and necessary permissions for use and occupation, and other details are given without responsibility and any intending purchasers or tenants should not rely on them as statements or representations of fact but must satisfy themselves by inspection or otherwise as to the correctness of each of them. 3. No person in the employment of Messrs. Aldreds has any authority to make or give any representation or warranty whatever in relation to this property. 4. If you are proposing to visit the property and are traveling some distance please check with Aldreds on the issue of availability prior to traveling. 5. Aldreds Property Consultants and associated services may offer additional services to the prospective purchaser for which they will be entitled to receive a commission.

Aldreds are pleased to be working with Mortgage Advice Bureau. They're an award-winning mortgage broker with over 1,400 advisers across the UK, and have access to over 12,000 mortgage products from over 90 lenders. Aldreds Estate Agents Ltd receive a commission of £200 on each completed case. Your home may be repossessed if you do not keep up repayments on your mortgage. There may be a fee for mortgage advice. The actual amount you pay will depend upon your circumstances. The fee is up to 1%, but a typical fee is 0.3% of the amount borrowed. Mortgage Advice Bureau is a trading name of Mortgage Seeker Limited which is an appointed representative of Mortgage Advice Bureau Limited and Mortgage Advice Bureau (Derby) Limited which are authorised and regulated by the Financial Conduct Authority. Mortgage Seeker Limited Registered Office: Lovewell Blake, Sixty Six North Quay, Great Yarmouth, Norfolk, NR30 1HE. Registered in England Number: 372141.

143 London Road North, Lowestoft, Suffolk, NR32 1NE
Tel: 01502 565432 Email: lowestoft@aldreds.co.uk <https://www.aldreds.co.uk/>

Registered in England Reg. No. 08945751 Registered Office: 66 North Quay, Great Yarmouth, Norfolk NR30 1HE Directors: Mark Duffield B.S.c. FRICS. Dan Crawley MNAEA Paul Lambert MNAEA